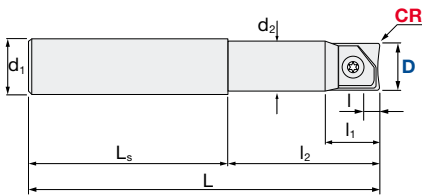
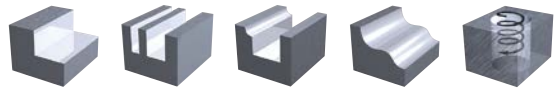


Indexable Milling Tools

ARPF | Radius High Precision Finish - Carbide Shank

V max High Speed	Semi Finishing	Finishing	HRC 62	No. of Teeth 2
----------------------------	----------------	-----------	------------------	--------------------------



R	± 0.015
Set-up	± 0.010

ARPF-W Radius High Precision Finish - Carbide Shank Regular

ID Code	Item Code	Stock	Flutes	D	L	l	l ₁	l ₂	L _s	d ₁	d ₂	Inserts
FH473	ARPF-08S08W	■	2	8	100	2.5	30	70	8	7.8	ZCFW-080-R...	
FH474	ARPF-10S10W			10	100	3	35	65	10	9.8	ZCFW-100-R...	
FH475	ARPF-12S12W			12	110	4	35	75	12	11.8	ZCFW-120-R...	
FH483	ARPF-16S16W			16	140	5	35	105	16	15.5	ZCFW-160-R...	
FH484	ARPF-20S20W			20	160	6	40	120	20	19.5	ZCFW-200-R...	
FH485	ARPF-25S25W			25	180	8	45	135	25	24.5	ZCFW-250-R...	



ARPF-WL Radius High Precision Finish - Carbide Shank Long Neck

ID Code	Item Code	Stock	Flutes	D	L	l	l ₁	l ₂	L _s	d ₁	d ₂	Inserts
FH411	ARPF-08S08WL	■	2	8	130	2.5	18	65	65	8	7.8	ZCFW-080-R...
FH412	ARPF-10S10WL			10	140	3	23	75	65	10	9.8	ZCFW-100-R...
FH413	ARPF-12S12WL			12	150	4	26	85	65	12	11.8	ZCFW-120-R...



ARPF-WE Radius High Precision Finish - Carbide Shank Extra Long

ID Code	Item Code	Stock	Flutes	D	L	l	l ₁	l ₂	L _s	d ₁	d ₂	Inserts
FH429	ARPF-16S16WE	■	2	16	200	5	29	120	80	16	15.8	ZCFW-160-R...
FH430	ARPF-20S20WE			20	250	6	36	150	100	20	19.8	ZCFW-200-R...
FH476	ARPF-25S25WE			25	300	8	41	190	110	25	24.8	ZCFW-250-R...

■ = Stock | Germany



Indexable Milling Tools | Grades Overview

INSERTS | Radius High Precision Finish

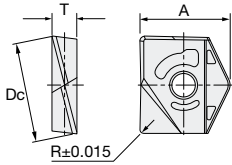


Fig. 1: ZCFW



Item Code	Size				Grade		Geometry	
	Dc	R	A	T	PCA12M	PTH08M		
ZCFW-080-03	8	0.3	9.7	2.1	WF551	WF286	Fig-1	
ZCFW-080-05		0.5			WF605	WF287		
ZCFW-080-10	1.0	WF552	WF288					
ZCFW-100-03	10	0.3	12	2.7	WF553	WF289		
ZCFW-100-05		0.5			WF606	WF290		
ZCFW-100-10		1.0			WF554	WF291		
ZCFW-100-15	1.5	WF555	WF292	12	WF556	WF293		
ZCFW-100-20	2.0	WF557	WF294					
ZCFW-120-03	0.3	14.6	3.2		WF607	WF295		
ZCFW-120-05	0.5				WF558	WF296		
ZCFW-120-10	1.0				WF559	WF297		
ZCFW-120-15	1.5				WF560	WF298		
ZCFW-120-20	2.0	WF561	WF300	16	WF652	WF299		
ZCFW-120-30	3.0	WF608	WF301					
ZCFW-160-03	0.3	16.6	4.2		WF562	WF302		
ZCFW-160-05	0.5				WF563	WF303		
ZCFW-160-10	1.0				WF564	WF304		
ZCFW-160-15	1.5				WF653	WF305		
ZCFW-160-20	2.0	19.9	5.2	WF609	WF307			
ZCFW-160-30	3.0			WF566	WF308			
ZCFW-200-03	0.3			20	5.2	WF567		WF309
ZCFW-200-05	0.5					WF568		WF310
ZCFW-200-10	1.0	WF654	WF311					
ZCFW-200-15	1.5	WF610	WF312			25		WF611
ZCFW-200-20	2.0	WF612	WF314					
ZCFW-200-30	3.0	WF613	WF315					
ZCFW-250-03	0.3	22.6	6.2	WF614	WF317			
ZCFW-250-05	0.5			WF615	WF318			
ZCFW-250-10	1.0			WF616	WF319			
ZCFW-250-20	2.0			WF617	WF320			
ZCFW-250-30	3.0	27.2	7.2	WF656	WF321			
ZCFW-320-03	0.3			32	7.2	WF618	WF322	
ZCFW-320-05	0.5					WF619	WF323	
ZCFW-320-10	1.0					WF620	WF324	
ZCFW-320-20	2.0	WF621	WF325					
ZCFW-320-30	3.0							

