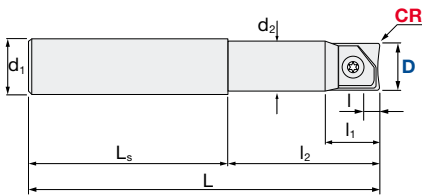
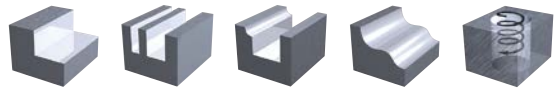


**Indexable Milling Tools**

**ARPF** | Radius High Precision Finish - Carbide Shank

<b>V max</b> High Speed	 Semi Finishing	 Finishing	<b>HRC</b> 62	<b>No. of Teeth</b> 2
----------------------------	--------------------	---------------	------------------	--------------------------



R	± 0.015
Set-up	± 0.010

**ARPF-W** Radius High Precision Finish - Carbide Shank Regular

ID Code	Item Code	Stock	Flutes	D	L	I	l <sub>1</sub>	l <sub>2</sub>	L <sub>s</sub>	d <sub>1</sub>	d <sub>2</sub>	Inserts
FH473	<b>ARPF-08S08W</b>	■	2	8	100	2.5	30	70	8	7.8	ZCFW-080-R...	
FH474	<b>ARPF-10S10W</b>			10	100	3	35	65	10	9.8	ZCFW-100-R...	
FH475	<b>ARPF-12S12W</b>			12	110	4	35	75	12	11.8	ZCFW-120-R...	
FH483	<b>ARPF-16S16W</b>			16	140	5	35	105	16	15.5	ZCFW-160-R...	
FH484	<b>ARPF-20S20W</b>			20	160	6	40	120	20	19.5	ZCFW-200-R...	
FH485	<b>ARPF-25S25W</b>			25	180	8	45	135	25	24.5	ZCFW-250-R...	



**ARPF-WL** Radius High Precision Finish - Carbide Shank Long Neck

ID Code	Item Code	Stock	Flutes	D	L	I	l <sub>1</sub>	l <sub>2</sub>	L <sub>s</sub>	d <sub>1</sub>	d <sub>2</sub>	Inserts
FH411	<b>ARPF-08S08WL</b>	■	2	8	130	2.5	18	65	65	8	7.8	ZCFW-080-R...
FH412	<b>ARPF-10S10WL</b>			10	140	3	23	75	65	10	9.8	ZCFW-100-R...
FH413	<b>ARPF-12S12WL</b>			12	150	4	26	85	65	12	11.8	ZCFW-120-R...



**ARPF-WE** Radius High Precision Finish - Carbide Shank Extra Long

ID Code	Item Code	Stock	Flutes	D	L	I	l <sub>1</sub>	l <sub>2</sub>	L <sub>s</sub>	d <sub>1</sub>	d <sub>2</sub>	Inserts
FH429	<b>ARPF-16S16WE</b>	■	2	16	200	5	29	120	80	16	15.8	ZCFW-160-R...
FH430	<b>ARPF-20S20WE</b>			20	250	6	36	150	100	20	19.8	ZCFW-200-R...
FH476	<b>ARPF-25S25WE</b>			25	300	8	41	190	110	25	24.8	ZCFW-250-R...

■ = Stock | Germany



Inserts p. 11

**Indexable Milling Tools | Grades Overview**

**INSERTS | Radius High Precision Finish**

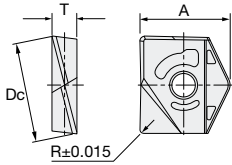


Fig. 1: ZCFW



Item Code	Size				Grade		Geometry	
	Dc	R	A	T	PCA12M	PTH08M		
ZCFW-080-03	8	0.3	9.7	2.1	WF551	WF286	Fig-1	
ZCFW-080-05		0.5			WF605	WF287		
ZCFW-080-10	1.0	WF552	WF288					
ZCFW-100-03	10	0.3	12	2.7	WF553	WF289		
ZCFW-100-05		0.5			WF606	WF290		
ZCFW-100-10		1.0			WF554	WF291		
ZCFW-100-15	1.5	WF555	WF292	12	WF556	WF293		
ZCFW-100-20	2.0	WF557	WF294					
ZCFW-120-03	0.3	14.6	3.2		WF558	WF296		
ZCFW-120-05	0.5				WF607	WF295		
ZCFW-120-10	1.0				WF559	WF297		
ZCFW-120-15	1.5				WF560	WF298		
ZCFW-120-20	2.0	WF561	WF300		16	WF608		WF301
ZCFW-120-30	3.0	WF562	WF299					
ZCFW-160-03	0.3	16.6	4.2			WF563		WF303
ZCFW-160-05	0.5					WF564		WF304
ZCFW-160-10	1.0			WF653		WF305		
ZCFW-160-15	1.5			WF565		WF306		
ZCFW-160-20	2.0			WF609	WF307			
ZCFW-160-30	3.0			WF566	WF308			
ZCFW-200-03	20	0.3	19.9	5.2	WF567	WF309		
ZCFW-200-05		0.5			WF568	WF310		
ZCFW-200-10		1.0			WF654	WF311		
ZCFW-200-15		1.5			WF610	WF312		
ZCFW-200-20		2.0			WF611	WF313		
ZCFW-200-30	3.0	WF612	WF314	25	WF613	WF315		
ZCFW-250-03	0.3	22.6	6.2		WF655	WF316		
ZCFW-250-05	0.5				WF614	WF317		
ZCFW-250-10	1.0				WF615	WF318		
ZCFW-250-20	2.0			WF616	WF319			
ZCFW-250-30	3.0	WF617	WF320	32	WF656	WF321		
ZCFW-320-03	0.3	27.2	7.2		WF618	WF320		
ZCFW-320-05	0.5				WF619	WF321		
ZCFW-320-10	1.0			WF620	WF322			
ZCFW-320-20	2.0							
ZCFW-320-30	3.0							

