

- DIN5480
- DIN5482
- BARUFFALDI
- DIN1809

4

4

*Choose the right model
to have the best machining!*

VDI DRIVEN TOOLS

Portautensili motorizzati / Driven Tools

PAGE 4.11 - 4.20



DIN5480 DRIVEN TOOLS

| | | |
|---|--|--|
| ASSIALE PORTA PINZA AXIAL COLLET CHUCK | RADIALE PORTA WELDON RADIAL WELDON CHUCK | ORIENTABILE ±90° ADJUSTABLE ±90° |
| ASSIALE PORTA FRESA AXIAL SHELL END MILLING CUTTER | ARRETRATO PORTA PINZA REAR OFFSET COLLET CHUCK | |
| ASSIALE PORTA WELDON AXIAL WELDON CHUCK | DOPPIO RADIALE PORTA PINZA DOUBLE RADIAL COLLET CHUCK | |
| RADIALE PORTA PINZA RADIAL COLLET CHUCK | DISASSATO PORTAPINZA OFFSET AXIS COLLET CHUCK | |
| RADIALE PORTA FRESA RADIAL SHELL END MILLING CUTTER | DISASSATO PORTA FRESA OFFSET AXIS SHELL END MILLING CUTTER | |

PAGE 4.21 - 4.28

DIN5482 DRIVEN TOOLS

| | |
|---|--|
| ASSIALE PORTA PINZA AXIAL COLLET CHUCK | ARRETRATO PORTA FRESA REAR OFFSET SHELL END MILLING CUTTER |
| ASSIALE PORTA FRESA AXIAL SHELL END MILLING CUTTER | ORIENTABILE ±90° ADJUSTABLE ±90° |
| RADIALE PORTA PINZA RADIAL COLLET CHUCK | |
| RADIALE PORTA FRESA RADIAL SHELL END MILLING CUTTER | |
| ARRETRATO PORTA PINZA REAR OFFSET COLLET CHUCK | |

PAGE 4.29 - 4.38

BARUFFALDI DRIVEN TOOLS

| | |
|--|---|
| ASSIALE PORTA PINZA AXIAL COLLET CHUCK | RADIALE DOPPIO PORTA PINZA DOUBLE RADIAL COLLET CHUCK |
| ASSIALE PORTA FRESA AXIAL SHELL END MILLING CUTTER | ORIENTABILE ±90° ADJUSTABLE ±90° |
| RADIALE PORTA PINZA RADIAL COLLET CHUCK | |
| RADIALE PORTA FRESA RADIAL SHELL END MILLING CUTTER | |
| ARRETRATO PORTA PINZA REAR OFFSET COLLET CHUCK | |
| ARRETRATO PORTA FRESA REAR OFFSET SHELL END MILLING CUTTER | |

PAGE 4.39 - 4.43

DIN1809 DRIVEN TOOLS

| |
|--|
| ASSIALE PORTA PINZA AXIAL COLLET CHUCK |
| RADIALE PORTA PINZA RADIAL COLLET CHUCK |
| ARRETRATO PORTA PINZA REAR OFFSET COLLET CHUCK |
| ORIENTABILE ±90° ADJUSTABLE ±90° |



PIÙ SEMPLICE / PIÙ INFO / PIÙ PRODOTTI - EASIER / MORE INFO / MORE PRODUCTS

TROVA IL TUO PRODOTTO IN POCHI CLICK - FIND YOUR PRODUCT IN FEW CLICKS



by category



by code



by description



by configurator

Un nuovo modo facile e veloce per ordinare la tua attrezzatura Gerardi

Il nuovo Gerardi estore offre la possibilità di visualizzare e ordinare qualsiasi articolo Gerardi appartenente alle categorie Workholding o Tooling presente sui nostri listini in modo semplice, veloce e completo. Da ora puoi ordinare la morsa, la testa angolare o il motorizzato che ti interessa direttamente on-line dal nostro estore senza costi aggiuntivi.

A new quick and easy way to order your equipment branded Gerardi.

The new Gerardi estore offers the ability to view and order any item available on our Workholding and Tooling catalogues with the easiest, fastest and comprehensive way. You can now order the vise, angle head or driven tool of your interest directly online from our store without any additional cost.



WINDOWS / IOS



ANDROID / IPHONE



SIMBOLI TIPOLOGIE MOTORIZZATI DRIVEN TOOLS DESIGN LOGOS

| | | | | | | | |
|--|--------------------------------|--|--|-------------------------------------|---------------------------------|--------------------------------------|--------------------------------------|
| | | | | | | | |
| Assiale Axial | Assiale doppio Double Axial | Disassato Offset Axis | Disassato Doppio Double Offset Axis | Radiale Radial | Radiale Doppio Double Radial | Radiale 4 Uscite Radial 4 Outputs | Radiale 8 Uscite Radial 8 Outputs |
| | | | | | | | |
| Radiale Rovesciato Radial Upside Down | Arretrato Rear Offset | Arretrato Doppio Double Rear Offset | Orientabile ±90° Adjustable ±90° | Portacreatore Driven Gear Hobber | | | |

SIMBOLOGIA DATI TECNICI TECHNICAL DATA LOGOS

| | | | | | | |
|-----------------------------------|--------------------------|--------------------------|---|--|---|---|
| USCITA OUTPUT | | | | | | |
| | Uscita HSK HSK output | Uscita ISO ISO output | Uscita portafresa Shell mill holder output | Uscita WELDON WELDON output | Uscita CAPTO CAPTO output | Portacreatore Driven Gear Hobber |
| PASSAGGIO REFRIGERANTE COOLANT | | | | | | |
| | | | | Refrigerante Esterno External Coolant | Refrigerante Interno Internal Coolant | Refrigerante Interno Internal Coolant |
| | | | | | 20/25/80 100bar | ReCool NUT |
| USCITA OUTPUT | | | | | | |
| | | | Rapporto Ratio | Rotazione uguale al mandrino Rotation same as machine spindle | Rotazione opposta al mandrino Rotation opposite as machine spindle | Rotaz. uguale ed opposta al mandrino Rotation same & opposite as machine spindle |

Portautensili Motorizzati / Driven Tools

VDI

Portautensili Motorizzati per torni CNC

Driven Tools for CNC lathes



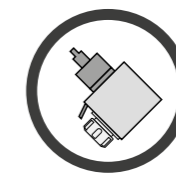
Velocità / High-speed
Max 24.000 Rpm



Internal coolant
fino a / Up to
100 Bar

I portautensili motorizzati per centri di tornitura a controllo numerico consentono di eseguire lavorazioni di fresatura, foratura e maschiatura sul tornio stesso e senza ulteriori piazzamenti. Anche in questo caso Gerardi propone un'ampia gamma di modelli, adatti ad attrezzare i torni e le torrette motorizzate dei maggiori costruttori di torni a livello mondiale con un rapporto qualità/prezzo insuperabile.

Driven tools for CNC turning centres allows milling, drilling and tapping operations on the lathes without additional parts handling. Also in this case Gerardi can supply a wide range of types in order to equip the CNC lathes and turrets of the most popular builders on the market with an unbeatable price/quality ratio.



SCAN THE QR CODE



AND FIND OUT MORE



Scegli il modello più adatto alla tua lavorazione!
Choose the right model to have the best machining!

USCITE MULTIPLE

MULTIPLE OUTPUTS

Tutti i motorizzati, ad esclusione di quelli ad angolo variabile, possono essere forniti con doppia pinza contrapposta anche di pari grandezza. Sono stati realizzati per i modelli di tornio più recenti anche motorizzati assiali con doppia / tripla uscita frontale e radiali doppia uscita frontale.

All the driven tools, with the exception of those with adjustable angle, can be supplied with double or multiple output even of the same dimension. Multiple outputs can be opposite or with the same direction.

ALTA VELOCITÀ RATIO 1:4

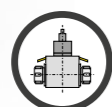
HIGH SPEED RATIO 1:4

(Opzione di moltiplica del numero di giri dalla torretta del tornio da 2 a 4 volte). Su richiesta, quasi tutti i modelli di motorizzati sono fornibili con velocità di rotazione fino a 24.000 Rpm. Questa soluzione permette di adeguare il numero di giri della torretta alle velocità di taglio delle nuove tipologie di utensili in commercio. Il sistema epicicloidale (interno) consente di mantenere inalterate le dimensioni di ingombro dei vari modelli, senza quindi penalizzare in alcun modo la funzionalità della macchina.

N.B: I MOTORIZZATI STANDARD CON RAPPORTO 1:1 HANNO REGIME DI ROTAZIONE MAX. 6.000 RPM.

All the driven tools types are available with speed until 24.000 Rpm. There is also the possibility of speed increaser from 2 to 4 times thus adapting the Rpm of the turret drive to the speed of today's cutting tools. The epicyclic speed increaser system (a system of satellite gears) is self contained in the standard head overall dimensions and guarantees the same standards of quality and reliability.

ATTENTION: THE STANDARD ROTARY TOOLS WITH 1:1 RATIO HAVE A MAX SPEED OF 6.000 Rpm



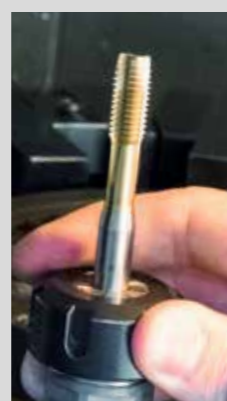
Radiale Doppio
Double Radial



Trattamento Corpo Main body Treated

Treatmento protettivo anti-ossidante del corpo

Specially treated corrosion resistant steel body



Maschiatura Tapping

Per le operazioni di maschiatura, tutti i nostri motorizzati possono utilizzare pinze compensate ET-1 perfettamente intercambiabili con le normali pinze secondo norma DIN 6499. Esse consentono una compensazione assiale da 7 a 13 mm a seconda della grandezza per recuperare eventuali errori di avanzamento e per l'inversione della rotazione.

For tapping operations all driven tools can be equipped with axially compensated collets ET-1 interchangeable with the standard ER collets according to the international standard DIN 6499. They allow the tap an axial compensation from 7 to 13 mm according to their size in order to compensate any feed error and the inversion of the rotation of direction.



Cuscinetti Ball Bearings

Cuscinetti di precisione a contatto obliquo, precaricati e lubrificati con grasso a vita.

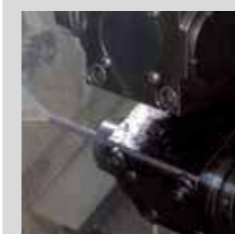
Preloaded angular contact ball bearings precision and long life lubrication.



Ingranaggi Gleason Gleason Spiral bevel gears

Coppia conica di ingranaggi spiroidali Gleason con evolvente rettificato ottimizzato

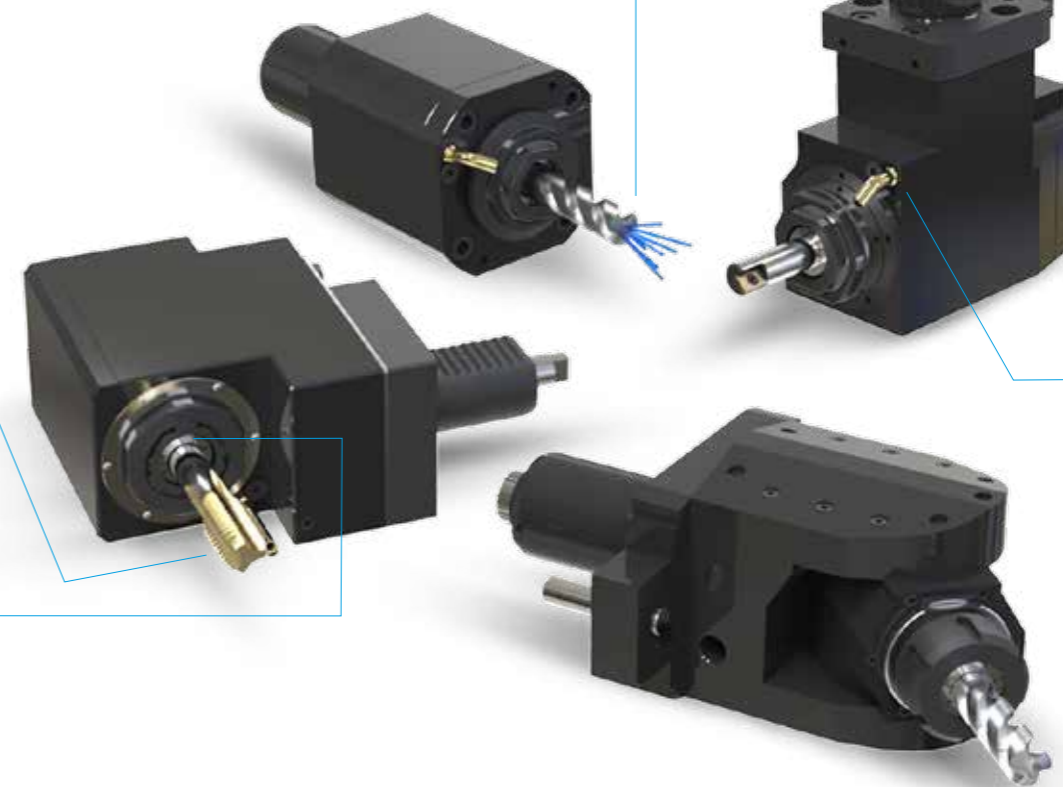
Gleason spiral bevel gears with completely ground involute form



Refrigerante Interno Internal Coolant

Tutti i motorizzati possono essere forniti con passaggio refrigerante attraverso l'albero utensile fino a 100bar.

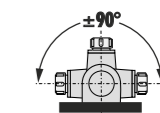
All the driven tools, can be supplied with coolant feed through the spindle with rotating distributor upto 100bar.



Corpo portautensili a sezione maggiorata per garantire maggior rigidità e minor vibrazioni
Re-designed main body to improve rigidity and reduce vibration.



Refrigerante esterno
10 BAR standard
External Coolant
10 BAR standard



TORRETTE UNIFICATE VDI: VDI LATHES TURRETS:

DIN 5480



DIN 5482



BARUFFALDI



DIN 1809

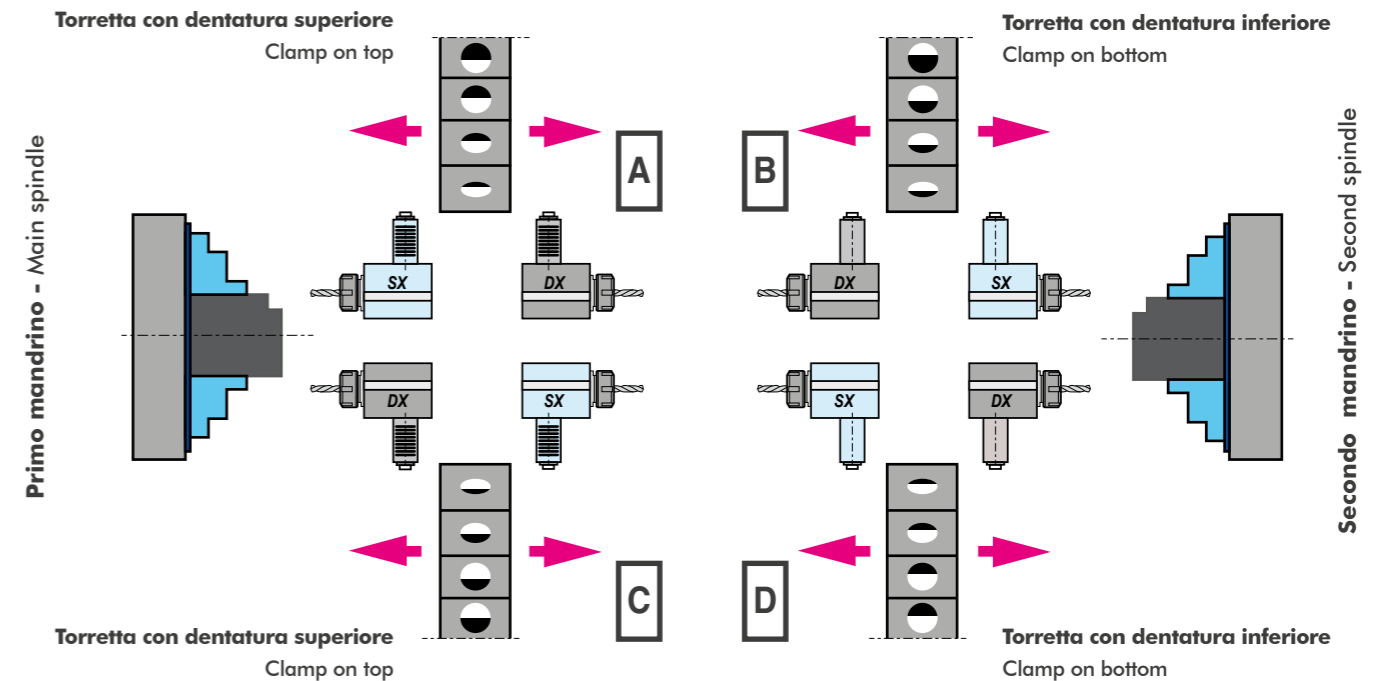
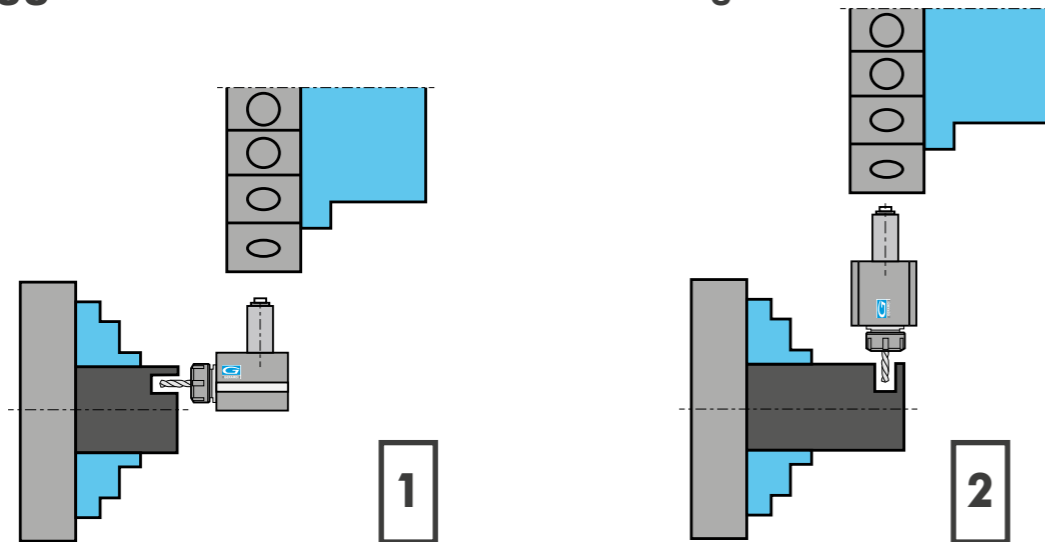


DENOMINAZIONE UTENSILE
TOOL DESIGNATION

MOTORIZZATI RADIALI PER LAVORAZIONI ASSIALI
RADIAL DRIVEN TOOLS FOR AXIAL MACHINING

Montaggio TANGENZIALE - OD Mounting

Montaggio TANGENZIALE - OD Mounting



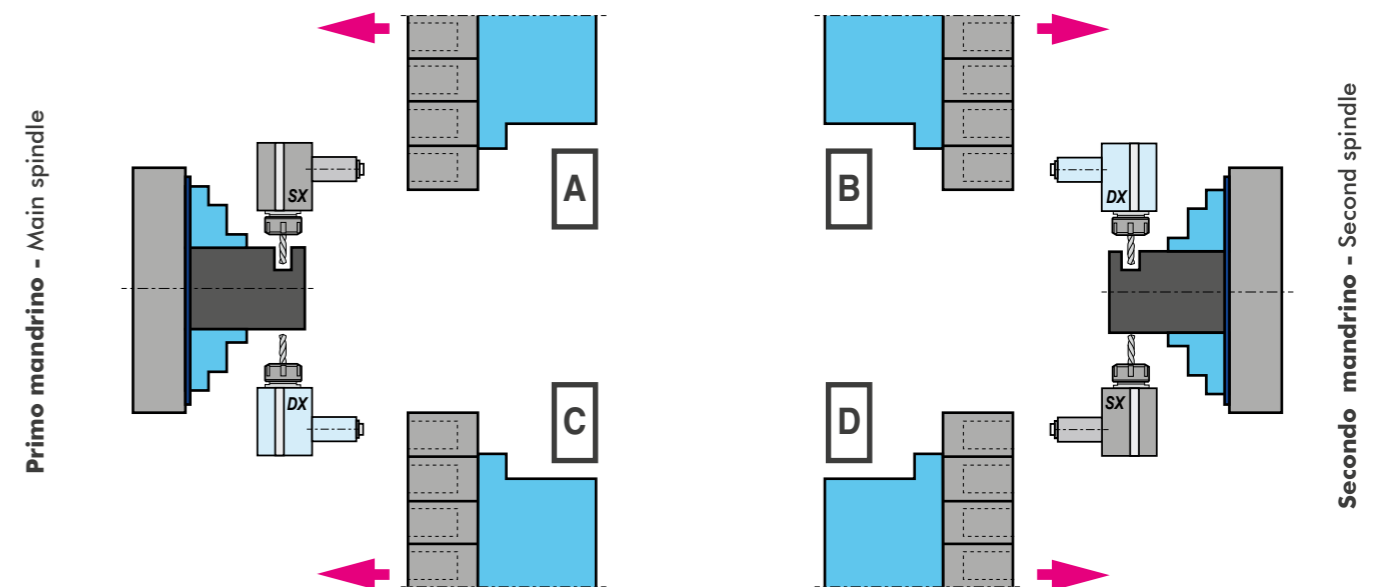
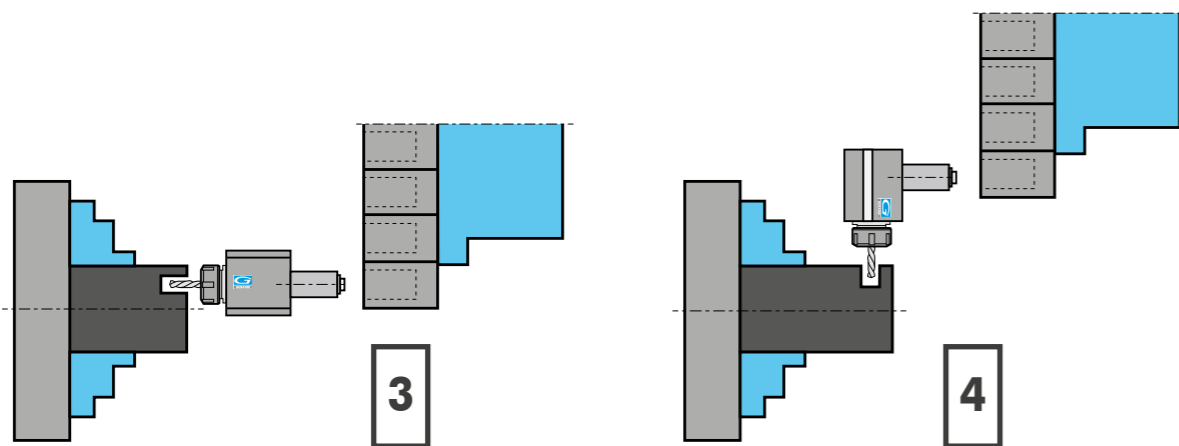
1 Motorizzato **RADIALE** per lavorazioni assiali
RADIAL driven tool for axial machining

2 Motorizzato **ASSIALE** per lavorazioni radiali
AXIAL driven tool heads for radial machining

MOTORIZZATI RADIALI PER LAVORAZIONI RADIALI
RADIAL DRIVEN TOOLS FOR RADIAL MACHINING

Montaggio FRONTALE - FACE Mounting

Montaggio FRONTALE - FACE Mounting

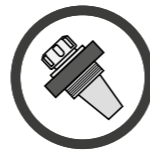


3 Motorizzato **ASSIALE** per lavorazioni assiali
AXIAL driven tool for axial machining

4 Motorizzato **RADIALE** per lavorazioni radiali
RADIAL driven tool heads for radial machining

MODULAR QUICK CHANGE ADAPTORS 2.0

NEW 2021



COMPATIBILI CON TUTTE LE USCITE ER - COMPATIBLE WITH ALL ER OUTPUTS

SISTEMA MODULARE MODULAR SYSTEM



Facile e veloce sistema modulare universale per cambiare rapidamente diverse tipologie di utensili.

An easy modular system to replace quickly any tool you need.

I cambi rapidi modulari Gerardi mantenendo il presetting precedentemente realizzato consentono un notevole risparmio dei costi ed un'ottimizzazione dei tempi ciclo. Sono perfettamente compatibili con tutti i motorizzati e le teste angolari aventi uscita ER DIN6499 e possono essere utilizzati sia con refrigerante interno che esterno.

- Nuovi cambi rapidi modulari 2.0 a FORTE SERRAGGIO, 100% Made in Italy.
- Prestazioni garantite e maggior rigidità sui motorizzati Gerardi grazie alla losanga di trascinamento (rimovibile) e alla ghiera con cuscinetto a sfera.
- Adattabili a motorizzati con uscita refrigerante sia interna che esterna.
- Si consiglia di non superare i 10.000 Rpm utilizzando i cambi rapidi

VANTAGGI ADVANTAGES



Aiutano a ridurre i costi-extra per l'acquisto di nuovi motorizzati o teste angolari.

The costs for further requirements of spindle units can be reduced by using the universal quick change adaptors

ALTE PRESTAZIONI HIGH PERFORMANCE



Ghiera con cuscinetto a sfera e losanga di trascinamento removibile per una maggiore rigidità.

High rigidity thanks to the ball bearing nut and the removable diamond plate

The Gerardi modular quick change adaptors keep the tool presetting previously made and allow great costs and machining times saving. They are perfectly compatible with all driven tools and angle head with ER DIN6499 output and they can be used with internal or external coolant.

- Universal HIGH TORQUE modular quick change adaptor 100% Made in Italy.
- Guaranteed higher rigidity and performances on Gerardi driven tools thanks to the removable diamond plate and the ball bearing nut
- Suitable for ER toolholder with external and internal coolant supply
- Using the quick change adaptors, we suggest not to exceed 10.000 Rpm

COMPATIBILITÀ COMPATIBILITY



Ampia gamma di uscite disponibili adatte al montaggio su qualsiasi tipologia di motorizzato o testa angolare con uscita ER

Wide range of outputs available. Ball bearing nut and removable diamond plate for highest rigidity.



CORPO CAMBIO RAPIDO 2.0
2.0 QUICK CHANGE BODY

GHIERA CON CUSCINETTO
BALL BEARING NUT

LOSANGA DI TRASCINAMENTO RIMOVIBILE
REMOVABLE DIAMOND PLATE
BREVETTO DEPOSITATO PATENT PENDING

10.000Rpm
MAX SUGGESTED

Vedi Pagina 7.12 - 7.15 - See pages 7.12 - 7.15



ER OUTPUTS COMPATIBLE



2 YEARS GUARANTEED



100% MADE IN ITALY



VDI 20 - 30 - 40 - 50 - 60

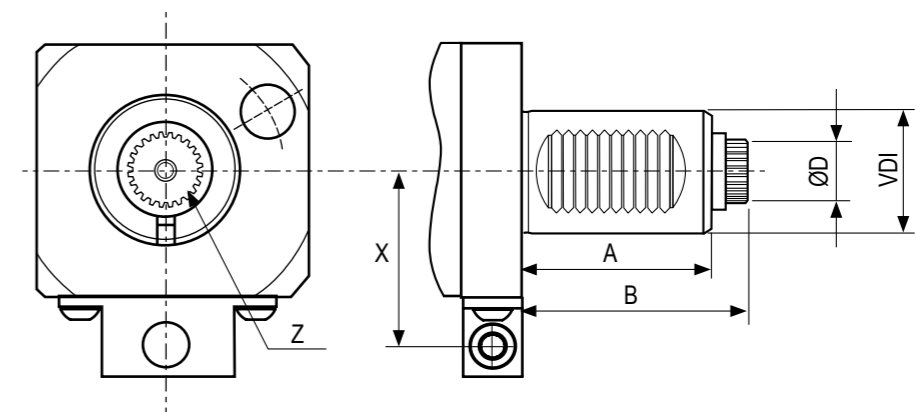
NEW 2021

VDI
DIN 5480



TORRETTA TIPO / TURRET TYPE
DIN69880 (VDI STANDARD)

DIN 5480



| VDI | A | B | ØD | Z (N° denti - Teeth) | X |
|-----|----|----|------|-------------------------|----|
| 20 | 35 | 51 | 10,8 | 12 | - |
| 25 | 48 | 57 | 13,8 | 16 | 40 |
| 30 | 55 | 67 | 15,8 | 18 | 48 |
| 40 | 63 | 75 | 19,8 | 24 | 56 |
| 50 | 78 | 93 | 23,8 | 18 | 64 |



DOTAZIONE STANDARD STANDARD EQUIPMENT

Chiave bloccaggio albero Art.179CH /
ugello refrigerazione Art.180 / vite bloccaggio ugello
Art.179CH shaft lock wrench /
cooling nozzle Art.180 / nozzle lock screws



CAMBI RAPIDI MODULARI MODULAR QUICK CHANGE

Facile e veloce sistema modulare per il cambio rapido delle diverse tipologie di portautensili con la sede per pinza ER (DIN6499).
Modular toolholder system for the fitting of toolholders in a spindle unit with ER collets (DIN6499) outputs.

MODELLI DI TORNIO COMPATIBILI
COMPATIBLE LATHE TYPES

VDI 20 / VDI 30 / VDI 40 / VDI 50 / VDI 60

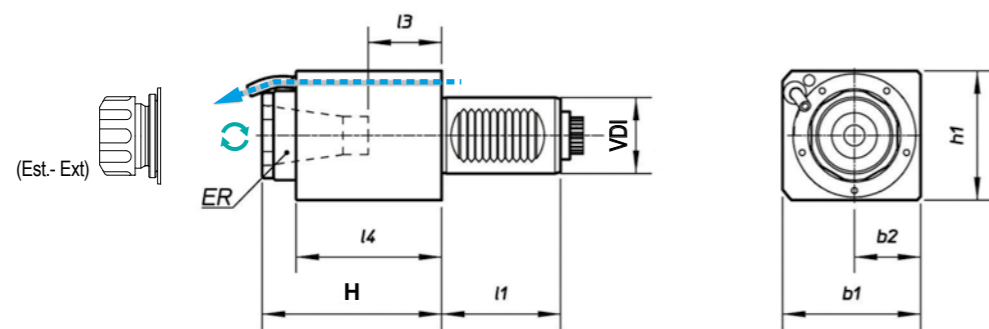
Vedi pagine compatibilità 5.10 / 5.11 - See compatibility pages 5.10 / 5.11

MODELLI DI TORNIO COMPATIBILI
COMPATIBLE LATHE TYPES

VDI 20 / VDI 30 / VDI 40 / VDI 50 / VDI 60

Vedi pagine compatibilità 5.10 / 5.11 - See compatibility pages 5.10 / 5.11

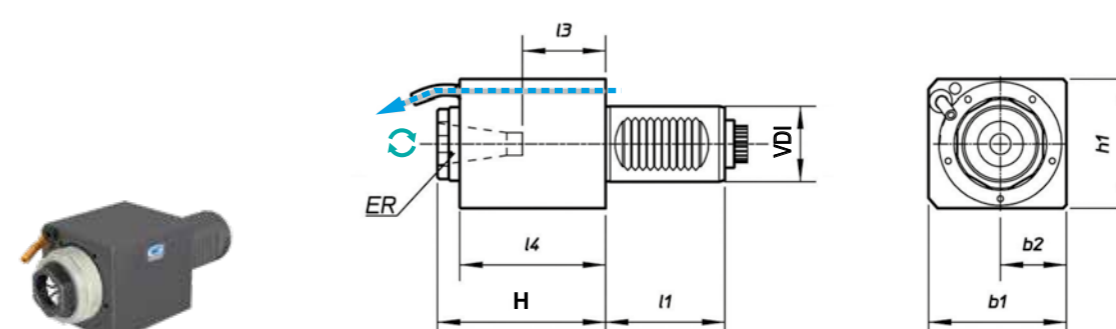
VDI
DIN 5480



TIPO - TYPE: Assiale - Axial
 USCITA - OUTPUT: Porta Pinza Collet Chuck
 REFRIGERANTE COOLANT: Esterno External
 RATIO: 1:1
 ROTAZIONE - ROTATION: Ugualo al mandrino Same as machine spindle

| Code | VDI | Output | Int Cool. | I1 | H | I3 | I4 | b1 | b2 | h1 | Nm | Rpm | kw |
|-------------|-----|-----------------|-----------|----|-------|----|------|-----|------|-----|-----|-------|----|
| 99.ST.8002 | 25 | ER-25 - Ø1+16 | NO | 48 | 69 | 21 | 54,5 | 54 | 27 | 56 | 20 | 6.000 | 6 |
| 99.ST.8003 | 30 | ER-25 - Ø1+16 | NO | 55 | 66 | 21 | 59 | 62 | 31 | 64 | 32 | 6.000 | 8 |
| 99.ST.8004 | 30 | ER-25 - Ø1+16 | NO | 55 | 94 | 39 | 88 | 62 | 31 | 64 | 32 | 6.000 | 8 |
| 99.ST.8005 | 40 | ER-32 - Ø2+20 | NO | 63 | 95 | 34 | 77 | 73 | 35 | 70 | 63 | 6.000 | 10 |
| 99.ST.8006 | 40 | ER-32 - Ø2+20 | NO | 63 | 115 | 54 | 97 | 73 | 35 | 70 | 63 | 6.000 | 10 |
| 99.ST.8007 | 50 | ER-40 - Ø3+30 | NO | 78 | 88 | 25 | 69 | 88 | 44 | 88 | 100 | 4.000 | 12 |
| 99.ST.8008 | 50 | ER-40 - Ø3+30 | NO | 78 | 120 | 45 | 102 | 88 | 44 | 88 | 100 | 4.000 | 12 |
| 99.ST.80101 | 60 | ER-40 - Ø3+26 | NO | 94 | 148,7 | 54 | 127 | 111 | 55,5 | 111 | 160 | 3.200 | 16 |
| 99.ST.80120 | 60 | ER50 (Est.-Ext) | NO | 94 | 169,9 | - | - | 110 | 55 | 110 | 160 | 3.200 | 16 |

VDI
DIN 5480

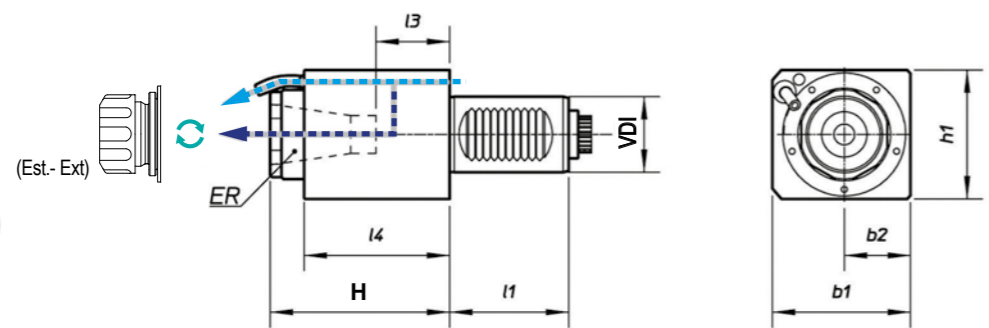


TIPO - TYPE: Assiale - Axial
 USCITA - OUTPUT: Porta Pinza Collet Chuck
 REFRIGERANTE COOLANT: Esterno External
 RATIO: 1:4
 ROTAZIONE - ROTATION: Ugualo al mandrino Same as machine spindle

| Code | VDI | Output | Int Cool. | I1 | H | I3 | I4 | b1 | b2 | h1 | Nm | Rpm | kw |
|------------|-----|---------------|-----------|----|-------|------|------|----|----|----|----|--------|----|
| 99.ST.8018 | 25 | ER-16 - Ø1+10 | NO | 48 | 98,5 | 60,5 | 89,5 | 54 | 27 | 56 | 5 | 24.000 | 3 |
| 99.ST.8019 | 30 | ER-16 - Ø1+10 | NO | - | 100 | - | - | 62 | 31 | 64 | 32 | 20.000 | - |
| 99.ST.8020 | 40 | ER-20 - Ø1+13 | NO | 63 | 112,5 | 74,5 | 106 | 76 | 38 | 76 | 16 | 16.000 | 5 |
| 99.ST.8021 | 50 | ER-20 - Ø1+13 | NO | 78 | 128,5 | 88,5 | 122 | 88 | 44 | 88 | 25 | 16.000 | 6 |

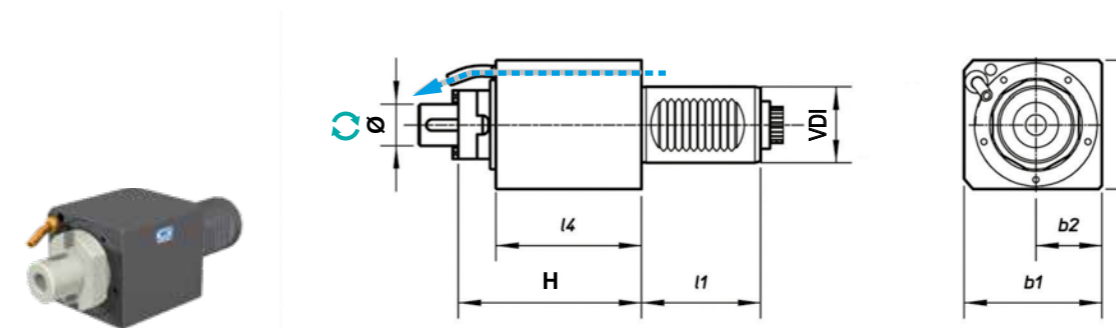
4

4



TIPO - TYPE: Assiale - Axial
 USCITA - OUTPUT: Porta Pinza Collet Chuck
 REFRIGERANTE COOLANT: 25BAR
 RATIO: 1:1
 ROTAZIONE - ROTATION: Ugualo al mandrino Same as machine spindle

| Code | VDI | Output | Int Cool. | I1 | H | I3 | I4 | b1 | b2 | h1 | Nm | Rpm | kw |
|-------------|-----|------------------|-----------|----|-------|------|-----|-----|----|-----|-----|-------|----|
| 99.ST.8010 | 25 | ER-25 - Ø1+16 | ✓ | 48 | 89 | 41,5 | 74 | 54 | 27 | 56 | 32 | 6.000 | 6 |
| 99.ST.8011 | 30 | ER-25 - Ø1+16 | ✓ | 55 | 66 | 21 | 59 | 62 | 31 | 64 | 32 | 6.000 | 8 |
| 99.ST.8012 | 30 | ER-25 - Ø1+16 | ✓ | 55 | 94 | 39 | 88 | 62 | 31 | 64 | 32 | 6.000 | 8 |
| 99.ST.8013 | 40 | ER-32 - Ø2+20 | ✓ | 63 | 95 | 34 | 77 | 73 | 35 | 70 | 63 | 6.000 | 10 |
| 99.ST.8014 | 40 | ER-32 - Ø2+20 | ✓ | 63 | 115 | 54 | 97 | 73 | 35 | 70 | 63 | 6.000 | 10 |
| 99.ST.8015 | 50 | ER-40 - Ø3+30 | ✓ | 78 | 120 | 45 | 102 | 88 | 44 | 88 | 100 | 4.000 | 12 |
| 99.ST.80121 | 60 | ER-50 (Est.-Ext) | ✓ (80bar) | 94 | 169,9 | - | - | 110 | 55 | 110 | 160 | 3.200 | 16 |



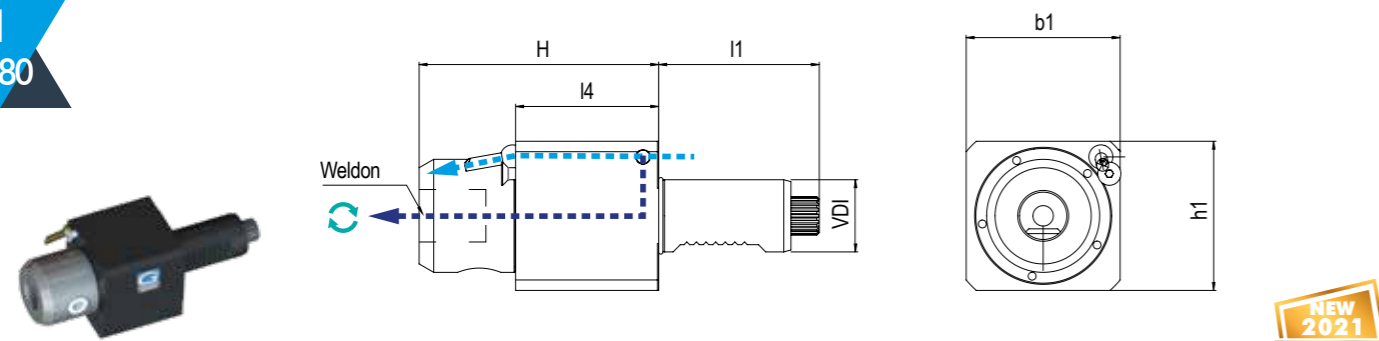
TIPO - TYPE: Assiale - Axial
 USCITA - OUTPUT: Porta Fresa Shell End Milling Cutter
 REFRIGERANTE COOLANT: Esterno External
 RATIO: 1:1
 ROTAZIONE - ROTATION: Ugualo al mandrino Same as machine spindle

| Code | VDI | Output | Int Cool. | I1 | H | I4 | b1 | b2 | h1 | Nm | Rpm | kw |
|------------|-----|--------|-----------|----|-------|------|----|----|----|-----|-------|----|
| 99.ST.8023 | 25 | Ø16 | NO | 48 | 110,5 | 89,5 | 54 | 27 | 56 | 20 | 6.000 | 6 |
| 99.ST.8024 | 30 | Ø22 | NO | 55 | 112 | 88 | 62 | 31 | 64 | 32 | 6.000 | 8 |
| 99.ST.8025 | 40 | Ø22 | NO | 63 | 102 | 77 | 73 | 35 | 70 | 63 | 6.000 | 10 |
| 99.ST.8026 | 50 | Ø22 | NO | 78 | 138 | 112 | 88 | 44 | 88 | 100 | 6.000 | 12 |
| 99.ST.8027 | 50 | Ø27 | NO | 78 | 138 | 112 | 88 | 44 | 88 | 100 | 4.000 | 12 |

MODELLI DI TORNIO COMPATIBILI
COMPATIBLE LATHE TYPES

VDI 20 / VDI 30 / VDI 40 / VDI 50 / VDI 60

Vedi pagine compatibilità 5.10 / 5.11 - See compatibility pages 5.10 / 5.11



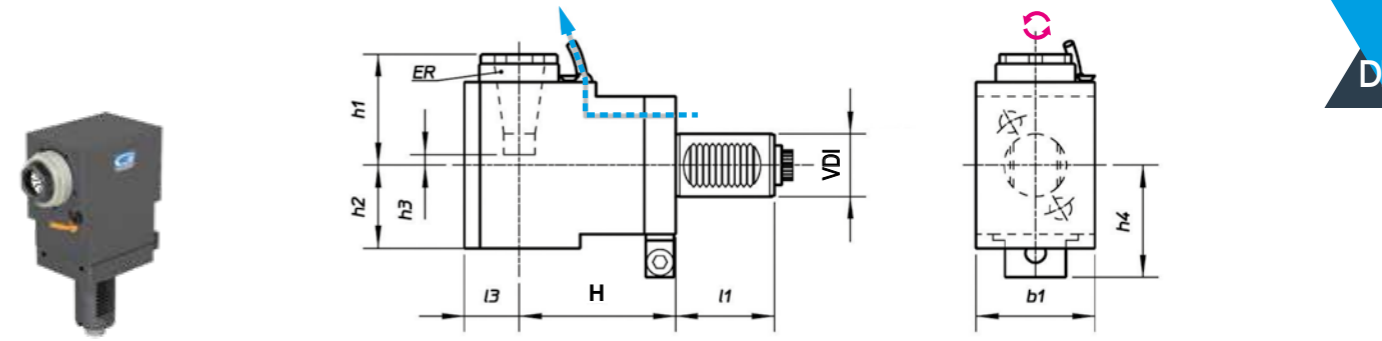
| | | | | | | | | | |
|--|--------------------------------|--|---------------------------|--|-------------------------------|--|--------------|--|---|
| | TIPO - TYPE Assiale - Axial | | USCITA - OUTPUT Weldon | | REFRIGERANTE COOLANT 25BAR | | RATIO 1:1 | | ROTAZIONE - ROTATION Uguale al mandrino Same as machine spindle |
|--|--------------------------------|--|---------------------------|--|-------------------------------|--|--------------|--|---|

| Code | VDI | Output | Int Cool. | I1 | H | I4 | b1 | h1 | Nm | Rpm | kw |
|-------------|-----|------------|-----------|------|-------|------|----|----|----|-------|----|
| 99.ST.80103 | 30 | Weldon Ø20 | NO | 66,7 | 99,59 | 59,5 | 64 | 62 | 32 | 5.000 | 8 |
| 99.ST.80104 | 30 | Weldon Ø20 | ✓ | 66,7 | 99,59 | 59,5 | 64 | 62 | 32 | 5.000 | 8 |
| 99.ST.80105 | 30 | Weldon Ø16 | NO | 66,7 | 99,59 | 59,5 | 64 | 62 | 32 | 5.000 | 8 |
| 99.ST.80106 | 30 | Weldon Ø16 | ✓ | 66,7 | 99,59 | 59,5 | 64 | 62 | 32 | 5.000 | 8 |

MODELLI DI TORNIO COMPATIBILI
COMPATIBLE LATHE TYPES

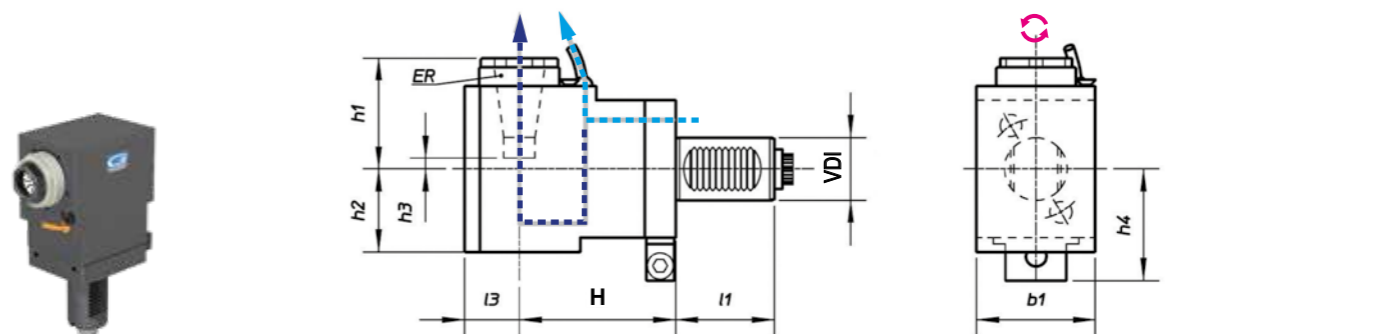
VDI 20 / VDI 30 / VDI 40 / VDI 50 / VDI 60

Vedi pagine compatibilità 5.10 / 5.11 - See compatibility pages 5.10 / 5.11



| | | | | | | | | | |
|--|---------------------------------|--|--|--|---|--|--------------|--|--|
| | TIPO - TYPE Radiale - Radial | | USCITA - OUTPUT Porta Pinza Collet Chuck | | REFRIGERANTE COOLANT Esterno External | | RATIO 1:1 | | ROTAZIONE - ROTATION Opposto al mandrino Opposite to machine spindle |
|--|---------------------------------|--|--|--|---|--|--------------|--|--|

| Code | VDI | Output | Int Cool. | I1 | H | I3 | b1 | h1 | h2 | h3 | h4 | Nm | Rpm | kw |
|------------|-----|---------------|-----------|----|-----|----|----|------|----|----|----|-----|-------|----|
| 99.ST.8029 | 25 | ER-25 - Ø1+16 | NO | 48 | 75 | 28 | 54 | 50,5 | 42 | 4 | 48 | 20 | 6.000 | 6 |
| 99.ST.8030 | 30 | ER-25 - Ø1+16 | NO | 55 | 55 | 31 | 64 | 56 | 48 | 3 | 54 | 32 | 6.000 | 8 |
| 99.ST.8031 | 30 | ER-25 - Ø1+16 | NO | 55 | 85 | 31 | 64 | 56 | 48 | 3 | 54 | 32 | 6.000 | 8 |
| 99.ST.8032 | 30 | ER-25 - Ø1+16 | NO | 55 | 100 | 31 | 64 | 56 | 48 | 3 | 54 | 32 | 6.000 | 8 |
| 99.ST.8033 | 40 | ER-32 - Ø2+20 | NO | 63 | 100 | 35 | 76 | 71 | 55 | 11 | 71 | 63 | 6.000 | 10 |
| 99.ST.8034 | 40 | ER-32 - Ø2+20 | NO | 63 | 120 | 35 | 76 | 71 | 55 | 11 | 71 | 63 | 6.000 | 10 |
| 99.ST.8035 | 50 | ER-40 - Ø3+30 | NO | 78 | 110 | 44 | 88 | 92 | 73 | 16 | 79 | 100 | 4.000 | 12 |



| | | | | | | | | | |
|--|---------------------------------|--|--|--|-------------------------------|--|--------------|--|--|
| | TIPO - TYPE Radiale - Radial | | USCITA - OUTPUT Porta Pinza Collet Chuck | | REFRIGERANTE COOLANT 25BAR | | RATIO 1:1 | | ROTAZIONE - ROTATION Opposto al mandrino Opposite to machine spindle |
|--|---------------------------------|--|--|--|-------------------------------|--|--------------|--|--|

| Code | VDI | Output | Int Cool. | I1 | H | I3 | b1 | h1 | h2 | h3 | h4 | Nm | Rpm | kw |
|------------|-----|---------------|-----------|----|-----|----|----|----|----|----|----|-----|-------|----|
| 99.ST.8037 | 25 | ER-25 - Ø1+16 | ✓ | 48 | 75 | 28 | 54 | 60 | 61 | 4 | 48 | 20 | 6.000 | 6 |
| 99.ST.8038 | 30 | ER-25 - Ø1+16 | ✓ | 55 | 55 | 31 | 64 | 56 | 60 | 2 | 54 | 32 | 6.000 | 8 |
| 99.ST.8039 | 30 | ER-25 - Ø1+16 | ✓ | 55 | 85 | 31 | 64 | 56 | 60 | 2 | 54 | 32 | 6.000 | 8 |
| 99.ST.8040 | 30 | ER-25 - Ø1+16 | ✓ | 55 | 100 | 31 | 64 | 56 | 60 | 2 | 54 | 32 | 6.000 | 8 |
| 99.ST.8041 | 40 | ER-32 - Ø2+20 | ✓ | 63 | 100 | 35 | 76 | 71 | 62 | 11 | 71 | 63 | 6.000 | 10 |
| 99.ST.8042 | 40 | ER-32 - Ø2+20 | ✓ | 63 | 120 | 35 | 76 | 71 | 73 | 11 | 71 | 63 | 6.000 | 10 |
| 99.ST.8043 | 50 | ER-40 - Ø3+30 | ✓ | 78 | 110 | 44 | 88 | 92 | 73 | 16 | 79 | 100 | 4.000 | 12 |

MODELLI DI TORNIO COMPATIBILI
COMPATIBLE LATHE TYPES

VDI 20 / VDI 30 / VDI 40 / VDI 50 / VDI 60

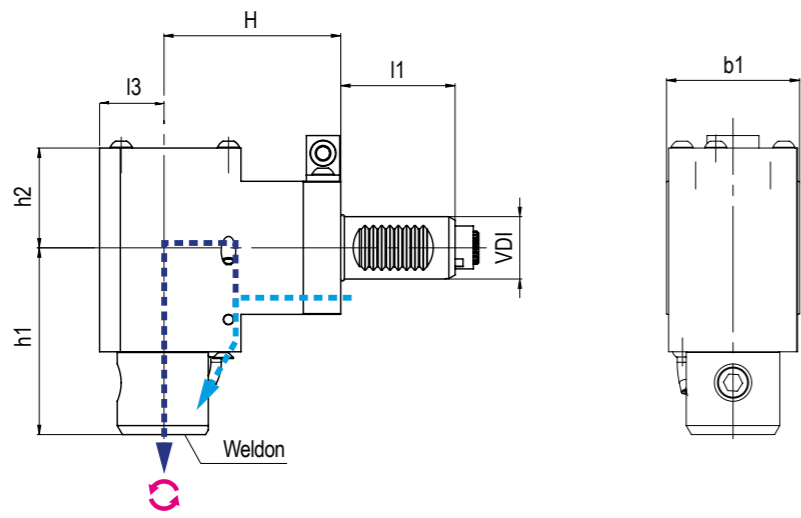
Vedi pagine compatibilità 5.10 / 5.11 - See compatibility pages 5.10 / 5.11

MODELLI DI TORNIO COMPATIBILI
COMPATIBLE LATHE TYPES

VDI 20 / VDI 30 / VDI 40 / VDI 50 / VDI 60

Vedi pagine compatibilità 5.10 / 5.11 - See compatibility pages 5.10 / 5.11

VDI
DIN 5480



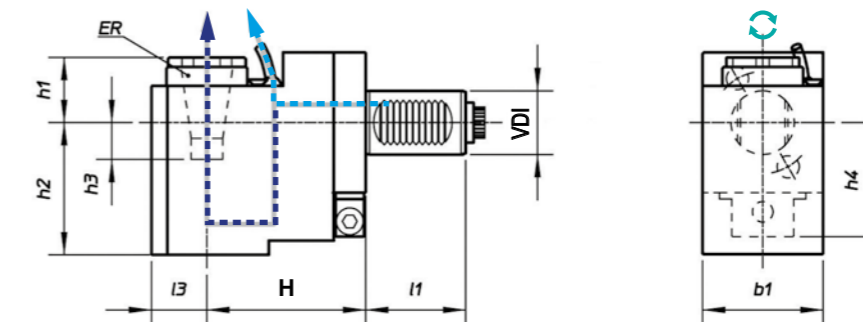
NEW
2021

TIPO - TYPE: Radiale - Radial
 USCITA - OUTPUT: Weldon
 REFRIGERANTE COOLANT: 25BAR
 RATIO: 1:1
 ROTAZIONE - ROTATION: Opposto al mandrino / Opposite to machine spindle

| Code | VDI | Output | Int Cool. | I1 | H | I3 | b1 | h1 | h2 | Nm | Rpm | kw |
|-------------|-----|------------|-----------|----|----|----|----|------|------|----|--------|----|
| 99.ST.80107 | 30 | Weldon Ø20 | NO | 55 | 85 | 31 | 64 | 89,8 | 48 | 60 | 10.000 | 10 |
| 99.ST.80108 | 30 | Weldon Ø20 | ✓ | 55 | 85 | 31 | 64 | 89,8 | 59,7 | 60 | 10.000 | 10 |
| 99.ST.80109 | 30 | Weldon Ø16 | NO | 55 | 85 | 31 | 64 | 89,9 | 48 | 60 | 10.000 | 10 |
| 99.ST.80110 | 30 | Weldon Ø16 | ✓ | 55 | 85 | 31 | 64 | 89,9 | 59,7 | 60 | 10.000 | 10 |

4

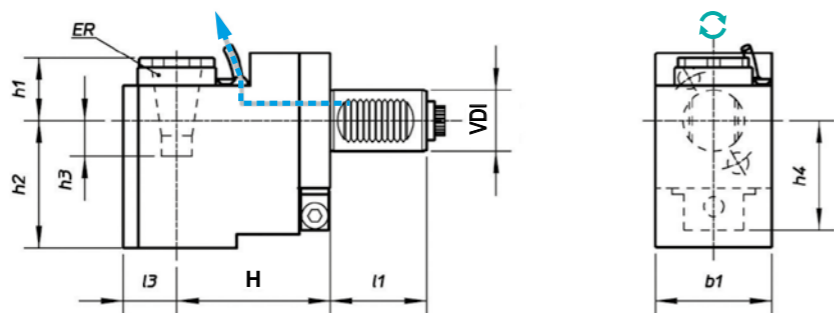
VDI
DIN 5480



TIPO - TYPE: Arretrato Rear Offset
 USCITA - OUTPUT: Porta Pinza Collet Chuck
 REFRIGERANTE COOLANT: 25BAR
 RATIO: 1:1
 ROTAZIONE - ROTATION: Uguale al mandrino / Same as machine spindle

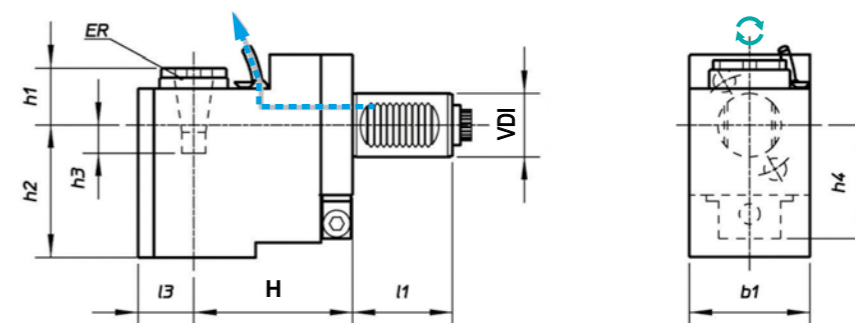
| Code | VDI | Output | Int Cool. | I1 | H | I3 | b1 | h1 | h2 | h3 | h4 | Nm | Rpm | kw |
|------------|-----|---------------|-----------|----|-----|----|----|----|-------|------|------|-----|-------|----|
| 99.ST.8051 | 25 | ER-20 - Ø1+13 | ✓ | 48 | 75 | 28 | 54 | 23 | 98 | 41 | 48 | 20 | 6.000 | 6 |
| 99.ST.8052 | 30 | ER-25 - Ø1+16 | ✓ | 55 | 85 | 31 | 64 | 24 | 105,5 | 45,5 | 56 | 32 | 5.000 | 8 |
| 99.ST.8053 | 30 | ER-25 - Ø1+16 | ✓ | 55 | 100 | 31 | 64 | 24 | 105,5 | 45,5 | 56 | 32 | 5.000 | 8 |
| 99.ST.8054 | 40 | ER-32 - Ø2+20 | ✓ | 63 | 100 | 35 | 76 | 30 | 124 | 40 | 65,5 | 63 | 6.000 | 10 |
| 99.ST.8055 | 50 | ER-40 - Ø3+30 | ✓ | 78 | 110 | 44 | 88 | 44 | 140,5 | 44 | 80,5 | 100 | 4.000 | 12 |

4



TIPO - TYPE: Arretrato Rear Offset
 USCITA - OUTPUT: Porta Pinza Collet Chuck
 REFRIGERANTE COOLANT: Esterno External
 RATIO: 1:1
 ROTAZIONE - ROTATION: Uguale al mandrino / Same as machine spindle

| Code | VDI | Output | Int Cool. | I1 | H | I3 | b1 | h1 | h2 | h3 | h4 | Nm | Rpm | kw |
|------------|-----|---------------|-----------|----|-----|----|----|------|-----|----|------|-----|-------|----|
| 99.ST.8045 | 25 | ER-20 - Ø1+13 | NO | 48 | 75 | 28 | 54 | 13,5 | 79 | 41 | 48 | 20 | 6.000 | 6 |
| 99.ST.8046 | 30 | ER-25 - Ø1+16 | NO | 55 | 85 | 31 | 64 | 21 | 90 | 45 | 56 | 32 | 5.000 | 8 |
| 99.ST.8047 | 30 | ER-25 - Ø1+16 | NO | 55 | 100 | 31 | 64 | 21 | 90 | 45 | 56 | 32 | 5.000 | 8 |
| 99.ST.8048 | 40 | ER-32 - Ø2+20 | NO | 63 | 100 | 35 | 76 | 20 | 106 | 40 | 65,5 | 63 | 6.000 | 10 |
| 99.ST.8049 | 50 | ER-40 - Ø3+30 | NO | 78 | 110 | 44 | 88 | 31 | 123 | 44 | 73,5 | 100 | 4.000 | 12 |



TIPO - TYPE: Arretrato Rear Offset
 USCITA - OUTPUT: Porta Pinza Collet Chuck
 REFRIGERANTE COOLANT: Esterno External
 RATIO: 1:4
 ROTAZIONE - ROTATION: Uguale al mandrino / Same as machine spindle

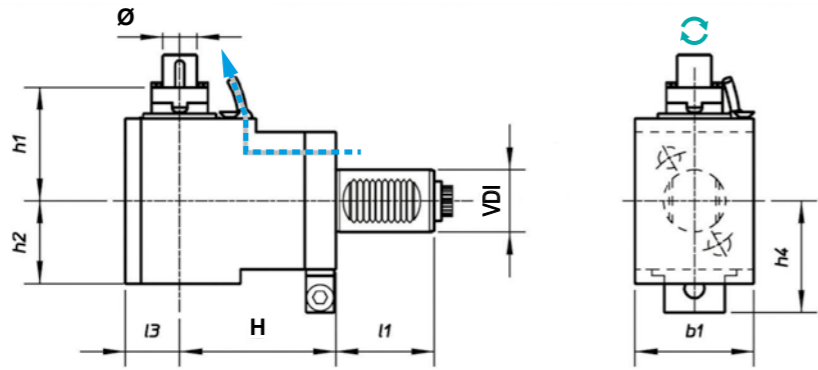
| Code | VDI | Output | Int Cool. | I1 | H | I3 | b1 | h1 | h2 | h3 | h4 | Nm | Rpm | kw |
|------------|-----|---------------|-----------|----|-----|----|----|----|-----|----|------|----|--------|----|
| 99.ST.8057 | 25 | ER-16 - Ø1+10 | NO | 48 | 90 | 21 | 54 | 31 | 81 | 11 | 48 | 5 | 24.000 | 3 |
| 99.ST.8058 | 30 | ER-16 - Ø1+10 | NO | 55 | 95 | 21 | 64 | 33 | 84 | 15 | 56 | 8 | 21.000 | 4 |
| 99.ST.8059 | 40 | ER-20 - Ø1+13 | NO | 63 | 125 | 27 | 76 | 45 | 108 | 10 | 65,5 | 16 | 16.000 | 5 |
| 99.ST.8060 | 50 | ER-20 - Ø1+13 | NO | 78 | 135 | 27 | 86 | 45 | 113 | 10 | 73,5 | 25 | 16.000 | 6 |

MODELLI DI TORNIO COMPATIBILI
COMPATIBLE LATHE TYPES

VDI 20 / VDI 30 / VDI 40 / VDI 50 / VDI 60

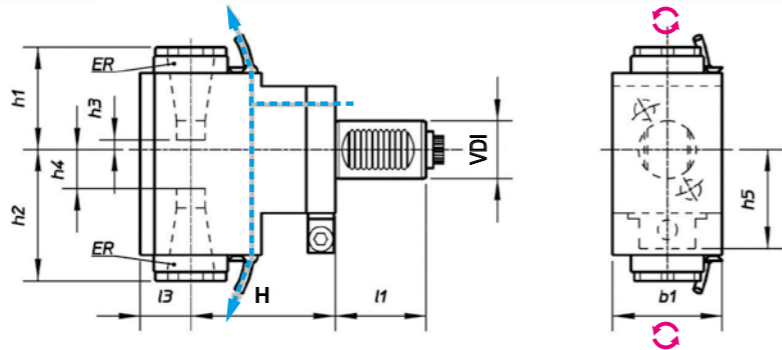
Vedi pagine compatibilità 5.10 / 5.11 - See compatibility pages 5.10 / 5.11

VDI
DIN 5480



TIPO - TYPE: Radiale Radial
 USCITA - OUTPUT: Porta Fresa Shell End Milling Cutter
 REFRIGERANTE COOLANT: Esterno External
 RATIO: 2:1
 ROTAZIONE - ROTATION: Uguale al mandrino Same as machine spindle

| Code | VDI | Output | Int Cool. | l1 | H | l3 | b1 | h1 | h2 | h4 | Nm | Rpm | kw |
|------------|-----|--------|-----------|----|-----|----|----|-----|----|------|-----|-------|----|
| 99.ST.8070 | 25 | Ø16 | NO | 48 | 75 | 28 | 54 | 66 | 48 | 48 | 40 | 3.000 | 6 |
| 99.ST.8071 | 30 | Ø22 | NO | 55 | 55 | 31 | 64 | 74 | 48 | 56 | 63 | 2.500 | 8 |
| 99.ST.8072 | 30 | Ø22 | NO | 55 | 85 | 31 | 64 | 74 | 48 | 56 | 63 | 2.500 | 8 |
| 99.ST.8073 | 30 | Ø22 | NO | 55 | 100 | 31 | 64 | 74 | 48 | 56 | 63 | 2.500 | 8 |
| 99.ST.8074 | 40 | Ø22 | NO | 63 | 100 | 35 | 76 | 78 | 55 | 65,5 | 63 | 3.000 | 8 |
| 99.ST.8075 | 40 | Ø22 | NO | 63 | 120 | 35 | 76 | 78 | 55 | 65,5 | 63 | 3.000 | 8 |
| 99.ST.8076 | 50 | Ø27 | NO | 78 | 110 | 44 | 88 | 110 | 62 | 73,5 | 100 | 2.000 | 12 |



TIPO - TYPE: Radiale Doppio Double Radial
 USCITA - OUTPUT: Porta Pinza Collet Chuck
 REFRIGERANTE COOLANT: Esterno External
 RATIO: 1:1
 ROTAZIONE - ROTATION: Opposto al mandrino Opposite to machine spindle

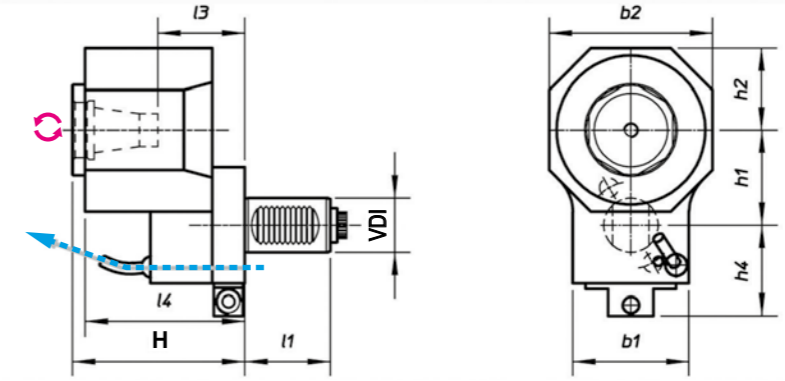
| Code | VDI | Output | Int Cool. | l1 | H | l3 | b1 | h1 | h2 | h3 | h4 | h5 | Nm | Rpm | kw |
|------------|-----|---------------|-----------|----|-----|----|----|------|------|-----|------|------|----|-------|----|
| 99.ST.8078 | 25 | ER-20 - Ø1+13 | NO | 48 | 75 | 28 | 54 | 50,5 | 71,5 | 4 | 32 | 48 | 20 | 6.000 | 6 |
| 99.ST.8079 | 30 | ER-25 - Ø1+16 | NO | 55 | 85 | 31 | 64 | 63 | 84 | 2,5 | 22,5 | 56 | 32 | 5.000 | 8 |
| 99.ST.8080 | 30 | ER-25 - Ø1+16 | NO | 55 | 100 | 31 | 64 | 63 | 84 | 2,5 | 22,5 | 56 | 32 | 5.000 | 8 |
| 99.ST.8081 | 40 | ER-32 - Ø2+20 | NO | 63 | 100 | 35 | 76 | 71 | 96 | 11 | 36,5 | 65,5 | 63 | 6.000 | 10 |
| 99.ST.8082 | 40 | ER-32 - Ø2+20 | NO | 63 | 120 | 35 | 76 | 71 | 96 | 11 | 36,5 | 65,5 | 63 | 6.000 | 10 |

MODELLI DI TORNIO COMPATIBILI
COMPATIBLE LATHE TYPES

VDI 20 / VDI 30 / VDI 40 / VDI 50 / VDI 60

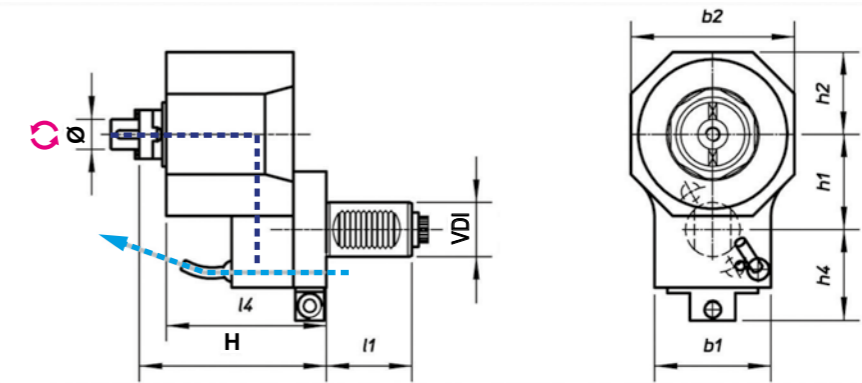
Vedi pagine compatibilità 5.10 / 5.11 - See compatibility pages 5.10 / 5.11

VDI
DIN 5480



TIPO - TYPE: Disassato Offset Axis
 USCITA - OUTPUT: Porta Pinza Collet Chuck
 REFRIGERANTE COOLANT: Esterno External
 RATIO: 2:1
 ROTAZIONE - ROTATION: Opposto al mandrino Opposite to machine spindle

| Code | VDI | Output | Int Cool. | l1 | H | l4 | b1 | b2 | h1 | h2 | h4 | Nm | Rpm | kw |
|-------------|-----|---------------|-----------|----|--------|----|----|-----|------|----|------|-----|-------|----|
| 99.ST.8083 | 30 | ER-25 - Ø1+16 | NO | 55 | 95 | 88 | 64 | 90 | 52,5 | 45 | 54 | 64 | 3.000 | 8 |
| 99.ST.80111 | 30 | ER-32 - Ø2+20 | NO | 55 | 100,25 | 88 | - | 90 | - | - | - | 63 | 2.500 | 8 |
| 99.ST.80112 | 40 | ER-32 - Ø2+20 | NO | 63 | 99 | 92 | 76 | 108 | 68,5 | 54 | 65,5 | 100 | 2.000 | 10 |



TIPO - TYPE: Disassato Offset Axis
 USCITA - OUTPUT: Porta Fresa Shell End Milling Cutter
 REFRIGERANTE COOLANT: Esterno External
 RATIO: 2:1
 ROTAZIONE - ROTATION: Opposto al mandrino Opposite to machine spindle

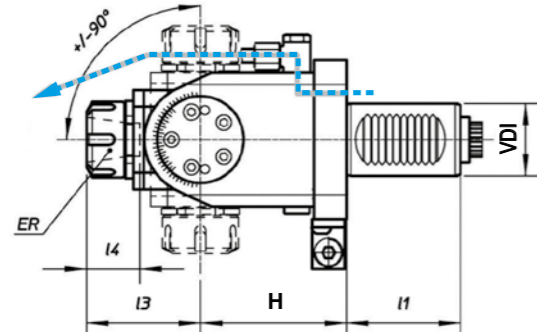
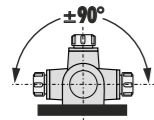
| Code | VDI | Output | Int Cool. | l1 | H | l4 | b1 | b2 | h1 | h2 | h4 | Nm | Rpm | kw |
|-------------|-----|--------|-----------|----|-----|----|----|-----|------|----|------|-----|-------|----|
| 99.ST.8084 | 30 | Ø22 | NO | 55 | 95 | 88 | 64 | 90 | 52,5 | 45 | 54 | 64 | 3.000 | 8 |
| 99.ST.8012A | 40 | Ø22 | NO | 63 | 117 | 92 | 76 | 108 | 68,5 | 54 | 65,5 | 100 | 2.000 | 10 |

MODELLI DI TORNIO COMPATIBILI
COMPATIBLE LATHE TYPES

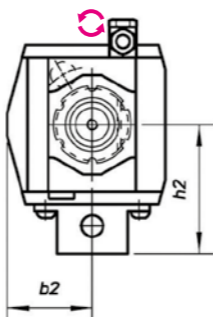
VDI 20 / VDI 30 / VDI 40 / VDI 50 / VDI 60

Vedi pagine compatibilità 5.10 / 5.11 - See compatibility pages 5.10 / 5.11

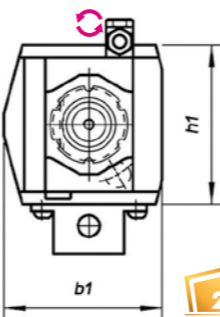
VDI
DIN 5480



SINISTRO - LEFT
(Standard)



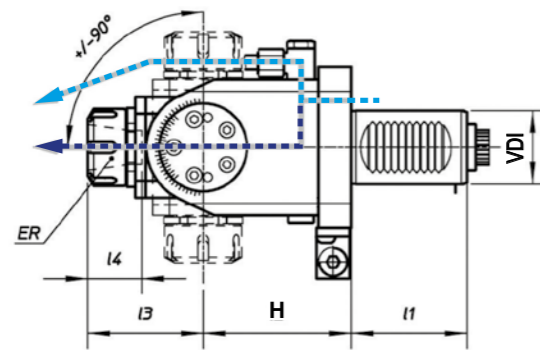
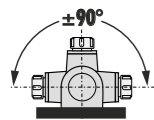
DESTRO - RIGHT
(Specify)



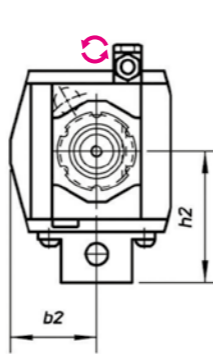
NEW
2021

| | | | | |
|------------------------------------|---------------------------------|-------------------------|------------------|--|
| Orientabile Adjustable ±90° | Porta Pinza Collet Chuck | Esterno External | RATIO 1:1 | ROTAZIONE - ROTATION Opposto al mandrino Opposite to machine spindle |
|------------------------------------|---------------------------------|-------------------------|------------------|--|

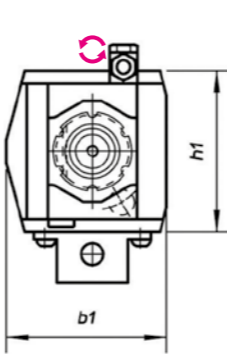
| Code | VDI | Output | Int Cool. | I1 | H | I3 | I4 | b1 | b2 | h1 | h2 | Nm | Rpm | kw |
|-------------|-----|---------------|-----------|------|-----|-----|------|------|----|-----|------|----|-------|----|
| 99.ST.80100 | 20 | ER-16 - Ø1±10 | NO | 39,6 | 70 | 52 | - | 69,5 | - | 50 | - | 15 | 6.000 | 2 |
| 99.ST.8086 | 25 | ER-16 - Ø1±10 | NO | 48 | 55 | 54 | 34,5 | 70,5 | 38 | 65 | 49,5 | 10 | 6.000 | 2 |
| 99.ST.8097 | 25 | ER-20 - Ø1±13 | NO | 48 | 70 | 52 | 37 | 70 | 37 | 64 | 54 | 15 | 6.000 | 3 |
| 99.ST.8087 | 30 | ER-20 - Ø1±13 | NO | 55 | 64 | 52 | 37 | 70 | 37 | 64 | 54 | 15 | 6.000 | 3 |
| 99.ST.8088 | 30 | ER-20 - Ø1±13 | NO | 55 | 97 | 52 | 37 | 70 | 37 | 64 | 54 | 15 | 6.000 | 3 |
| 99.ST.8089 | 40 | ER-25 - Ø1±16 | NO | 63 | 81 | 63 | 42 | 87 | 47 | 88 | 71 | 25 | 4.000 | 4 |
| 99.ST.8098 | 40 | ER-25 - Ø1±16 | NO | 63 | 120 | 63 | 42 | 87 | 47 | 88 | 71 | 25 | 4.000 | 4 |
| 99.ST.8096 | 50 | ER-32 - Ø2±20 | NO | 78 | 123 | 101 | 47 | 134 | 54 | 108 | 78 | 50 | 4.000 | 6 |



SINISTRO - LEFT
(Standard)



DESTRO - RIGHT
(Specify)



| | | | | |
|------------------------------------|---------------------------------|-----------|------------------|--|
| Orientabile Adjustable ±90° | Porta Pinza Collet Chuck | 25BAR | RATIO 1:1 | ROTAZIONE - ROTATION Opposto al mandrino Opposite to machine spindle |
|------------------------------------|---------------------------------|-----------|------------------|--|

| Code | VDI | Output | Int Cool. | I1 | H | I3 | I4 | b1 | b2 | h1 | h2 | h4 | Nm | Rpm | kw |
|------------|-----|---------------|-----------|----|----|----|----|----|----|----|----|----|----|-------|----|
| 99.ST.8091 | 30 | ER-20 - Ø1±13 | ✓ | 55 | 64 | 37 | 52 | 37 | 70 | 37 | 64 | 54 | 15 | 6.000 | 3 |
| 99.ST.8092 | 30 | ER-20 - Ø1±13 | ✓ | 55 | 97 | 37 | 52 | 37 | 70 | 37 | 64 | 54 | 15 | 6.000 | 3 |
| 99.ST.8093 | 40 | ER-25 - Ø1±16 | ✓ | 63 | 81 | 42 | 63 | 42 | 87 | 47 | 88 | 71 | 25 | 4.000 | 4 |

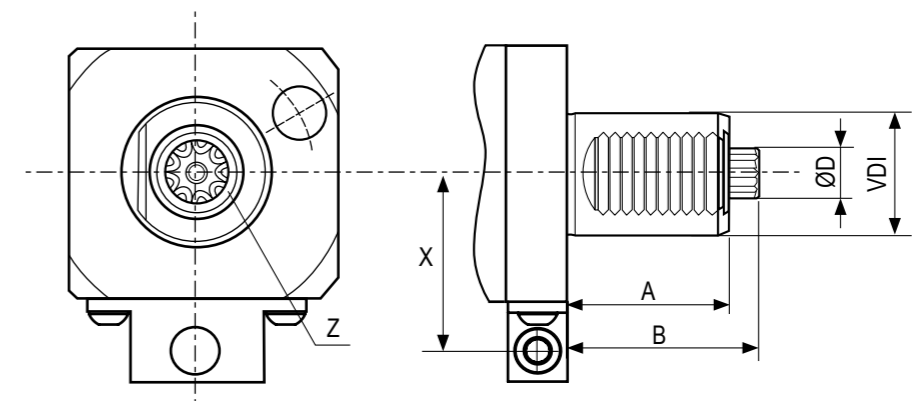
VDI 20 - 30 - 40 - 50 - 60

VDI
DIN 5482

TORRETTA TIPO / TURRET TYPE
DIN69880 (VDI STANDARD)



DIN 5482



| VDI | A | B | ØD | Z (N°denti - Teeth) | X |
|-----|----|-----|------|------------------------|----|
| 30 | 45 | 55 | 14,5 | 8 | 40 |
| 40 | 53 | 63 | 16,5 | 9 | 63 |
| 50 | 78 | 93 | 19,5 | 11 | 70 |
| 60 | 94 | 108 | 24,5 | 14 | - |



DOTAZIONE STANDARD
STANDARD EQUIPMENT

Chiave bloccaggio albero Art.179CH /
ugello refrigerazione Art.180 / vite bloccaggio ugello
Art.179CH shaft lock wrench /
cooling nozzle Art.180 / nozzle lock screws



CAMBI RAPIDI MODULARI Vedi pag. 7.12 - 7.15
MODULAR QUICK CHANGE See page 7.12 - 7.15

Facile e veloce sistema modulare per il cambio rapido delle diverse
tipologie di portautensili con la sede per pinza ER (DIN6499).
Modular toolholder system for the fitting of toolholders in
a spindle unit with ER collets (DIN6499) outputs.

MODELLI DI TORNIO COMPATIBILI
COMPATIBLE LATHE TYPES

VDI 20 / VDI 30 / VDI 40 / VDI 50 / VDI 60

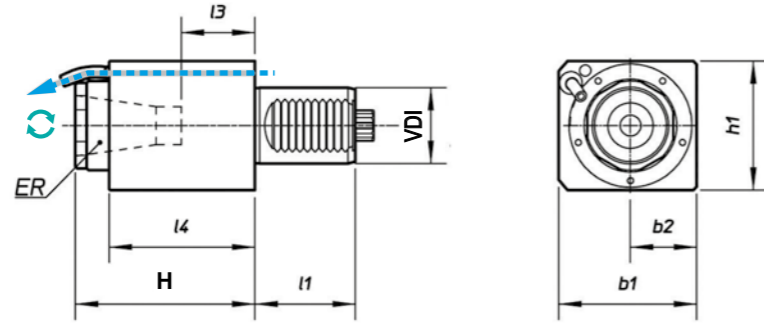
Vedi pagine compatibilità 5.10 / 5.11 - See compatibility pages 5.10 / 5.11

MODELLI DI TORNIO COMPATIBILI
COMPATIBLE LATHE TYPES

VDI 20 / VDI 30 / VDI 40 / VDI 50 / VDI 60

Vedi pagine compatibilità 5.10 / 5.11 - See compatibility pages 5.10 / 5.11

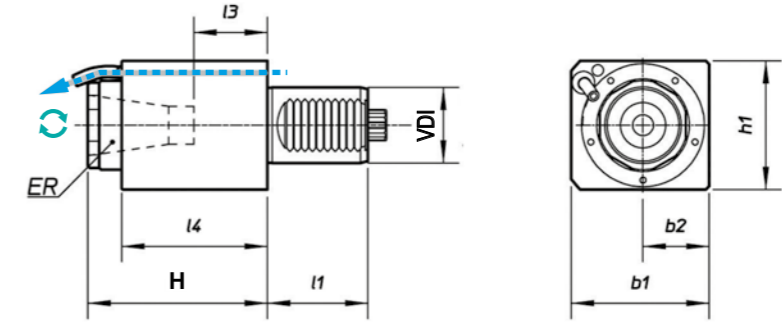
VDI
DIN 5482



TIPO - TYPE: Assiale - Axial
 USCITA - OUTPUT: Porta Pinza Collet Chuck
 REFRIGERANTE COOLANT: Esterno External
 RATIO: 1:1
 ROTAZIONE - ROTATION: Uguale al mandrino Same as machine spindle

| Code | VDI | Output | Int Cool. | l1 | H | l3 | l4 | b1 | b2 | h1 | Nm | Rpm | kw |
|------------|-----|---------------|-----------|----|-----|-----|-----|-----|----|-----|-----|-------|----|
| 99.ST.8201 | 30 | ER-25 - Ø1+16 | NO | 45 | 94 | 39 | 88 | 62 | 31 | 64 | 32 | 6.000 | 8 |
| 99.ST.8203 | 40 | ER-32 - Ø2+20 | NO | 53 | 115 | 54 | 97 | 73 | 35 | 70 | 63 | 5.000 | 10 |
| 99.ST.8205 | 50 | ER-40 - Ø3+30 | NO | 78 | 150 | 75 | 142 | 88 | 44 | 88 | 100 | 4.000 | 12 |
| 99.ST.8206 | 60 | ER-50 - Ø7+34 | NO | 94 | 220 | 110 | 168 | 110 | 55 | 110 | 160 | 3.200 | 15 |

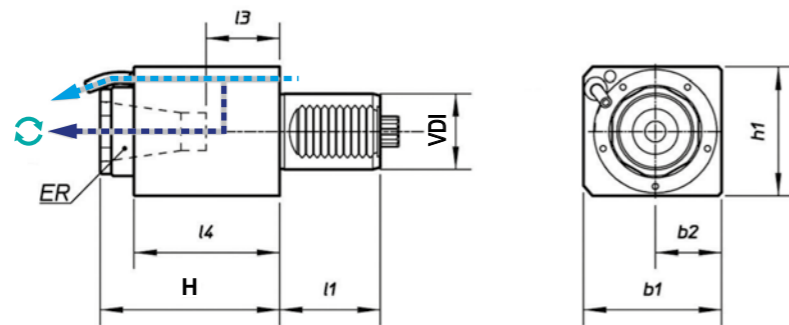
VDI
DIN 5482



TIPO - TYPE: Assiale - Axial
 USCITA - OUTPUT: Porta Pinza Collet Chuck
 REFRIGERANTE COOLANT: Esterno External
 RATIO: 1:4
 ROTAZIONE - ROTATION: Uguale al mandrino Same as machine spindle

| Code | VDI | Output | Int Cool. | l1 | H | l3 | l4 | b1 | b2 | h1 | Nm | Rpm | kw |
|------------|-----|---------------|-----------|----|-------|------|-----|----|----|----|----|--------|----|
| 99.ST.8212 | 30 | ER-16 - Ø1+10 | NO | 45 | 100 | 58 | 88 | 62 | 31 | 64 | 8 | 20.000 | 4 |
| 99.ST.8213 | 40 | ER-20 - Ø1+13 | NO | 53 | 112,5 | 74,5 | 106 | 76 | 38 | 76 | 16 | 16.000 | 5 |
| 99.ST.8214 | 50 | ER-20 - Ø1+13 | NO | 78 | 128,5 | 88,5 | 122 | 88 | 44 | 88 | 25 | 16.000 | 6 |

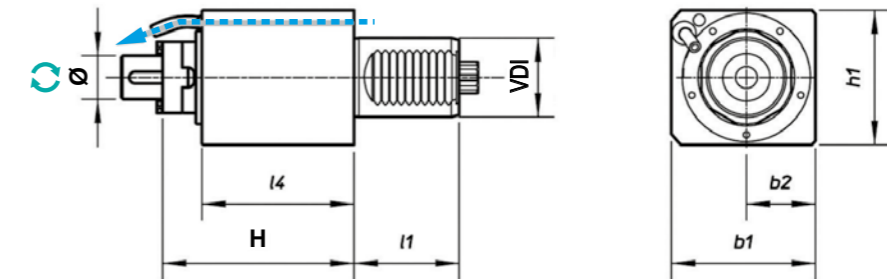
4



TIPO - TYPE: Assiale - Axial
 USCITA - OUTPUT: Porta Pinza Collet Chuck
 REFRIGERANTE COOLANT: 25BAR
 RATIO: 1:1
 ROTAZIONE - ROTATION: Uguale al mandrino Same as machine spindle

| Code | VDI | Output | Int Cool. | l1 | H | l3 | l4 | b1 | b2 | h1 | Nm | Rpm | kw |
|------------|-----|---------------|-----------|----|-----|-----|-----|-----|----|-----|-----|-------|----|
| 99.ST.8207 | 30 | ER-25 - Ø1+16 | ✓ | 45 | 94 | 39 | 88 | 62 | 31 | 64 | 32 | 6.000 | 8 |
| 99.ST.8208 | 40 | ER-32 - Ø2+20 | ✓ | 53 | 115 | 54 | 97 | 73 | 35 | 70 | 63 | 5.000 | 10 |
| 99.ST.8210 | 50 | ER-40 - Ø3+30 | ✓ | 78 | 133 | 45 | 112 | 88 | 44 | 88 | 100 | 4.000 | 12 |
| 99.ST.8211 | 60 | ER-50 - Ø7+34 | ✓ | 94 | 228 | 110 | 168 | 110 | 55 | 110 | 160 | 3.200 | 15 |

4



TIPO - TYPE: Assiale - Axial
 USCITA - OUTPUT: Porta Fresa Shell End Milling Cutter
 REFRIGERANTE COOLANT: Esterno External
 RATIO: 1:1
 ROTAZIONE - ROTATION: Uguale al mandrino Same as machine spindle

| Code | VDI | Output | Int Cool. | l1 | H | l3 | l4 | b1 | b2 | h1 | Nm | Rpm | kw |
|------------|-----|--------|-----------|----|-----|----|----|----|----|----|----|-------|----|
| 99.ST.8215 | 30 | Ø22 | NO | 45 | 112 | | 88 | 62 | 31 | 64 | 32 | 6.000 | 8 |
| 99.ST.8216 | 40 | Ø22 | NO | 53 | 124 | | 99 | 73 | 35 | 70 | 63 | 5.000 | 10 |

MODELLI DI TORNIO COMPATIBILI
COMPATIBLE LATHE TYPES

VDI 20 / VDI 30 / VDI 40 / VDI 50 / VDI 60

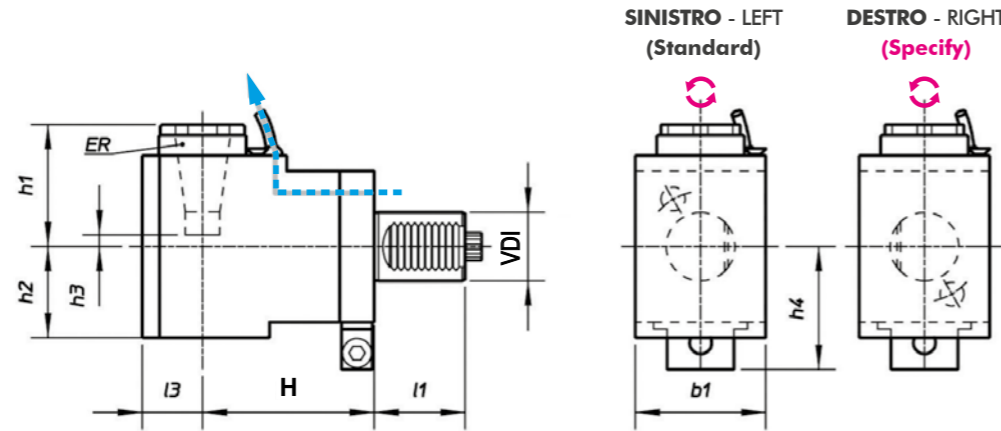
Vedi pagine compatibilità 5.10 / 5.11 - See compatibility pages 5.10 / 5.11

MODELLI DI TORNIO COMPATIBILI
COMPATIBLE LATHE TYPES

VDI 20 / VDI 30 / VDI 40 / VDI 50 / VDI 60

Vedi pagine compatibilità 5.10 / 5.11 - See compatibility pages 5.10 / 5.11

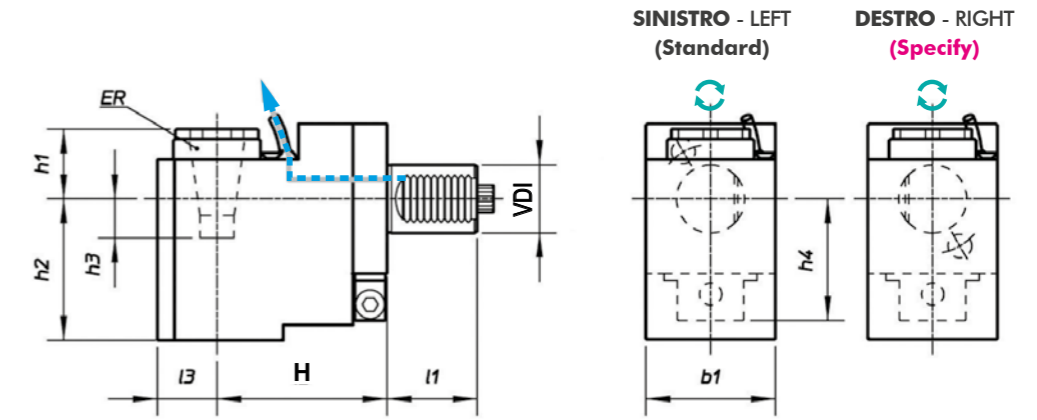
VDI
DIN 5482



| | | | | | | | | | |
|--|--------------------------------|--|---|--|--|--|--------------|--|--|
| | TIPO - TYPE Radial - Radial | | USCITA - OUTPUT Porta Pinza Collet Chuck | | REFRIGERANTE COOLANT Esterno External | | RATIO 1:1 | | ROTAZIONE - ROTATION Opposto al mandrino Opposite to machine spindle |
|--|--------------------------------|--|---|--|--|--|--------------|--|--|

| Code | VDI | Output | Int Cool. | l1 | H | l3 | b1 | h1 | h2 | h3 | h4 | Nm | Rpm | kw |
|------------|-----|---------------|-----------|----|-----|----|-----|-----|-----|----|------|-----|-------|----|
| 99.ST.8217 | 30 | ER-25 - Ø1+16 | NO | 45 | 55 | 31 | 64 | 56 | 48 | 3 | 52 | 32 | 6.000 | 8 |
| 99.ST.8220 | 40 | ER-32 - Ø2+20 | NO | 53 | 100 | 35 | 76 | 71 | 55 | 11 | 71 | 63 | 5.000 | 10 |
| 99.ST.8221 | 50 | ER-40 - Ø3+30 | NO | 78 | 110 | 44 | 88 | 92 | 62 | 17 | 80,5 | 100 | 4.000 | 12 |
| 99.ST.8222 | 60 | ER-50 - Ø7+34 | NO | 94 | 130 | 55 | 110 | 149 | 102 | 39 | 103 | 160 | 3.200 | 15 |

VDI
DIN 5482

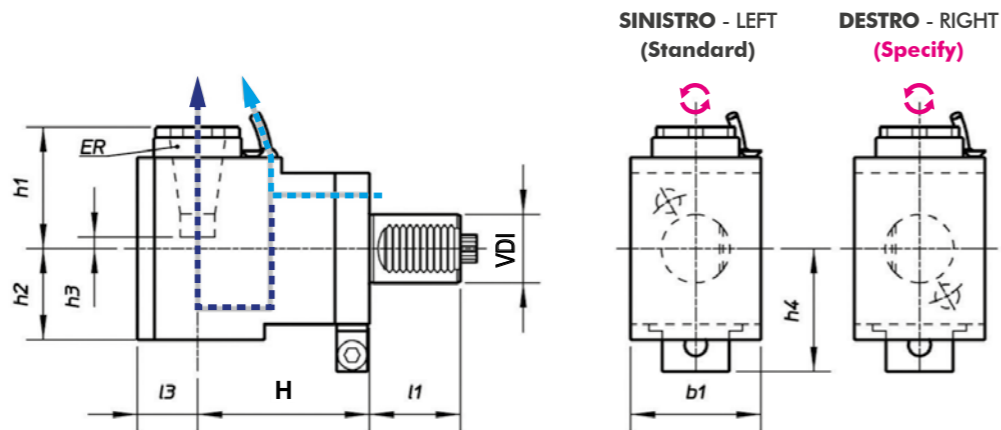


| | | | | | | | | | |
|--|--------------------------------------|--|---|--|--|--|--------------|--|---|
| | TIPO - TYPE Arretrato Rear Offset | | USCITA - OUTPUT Porta Pinza Collet Chuck | | REFRIGERANTE COOLANT Esterno External | | RATIO 1:1 | | ROTAZIONE - ROTATION Uguale al mandrino Same as machine spindle |
|--|--------------------------------------|--|---|--|--|--|--------------|--|---|

| Code | VDI | Output | Int Cool. | l1 | H | l3 | b1 | h1 | h2 | h3 | h4 | Nm | Rpm | kw |
|------------|-----|---------------|-----------|----|-----|----|-----|------|-----|----|------|-----|-------|----|
| 99.ST.8229 | 30 | ER-25 - Ø1+16 | NO | 45 | 85 | 31 | 64 | 14,5 | 90 | 45 | 52 | 32 | 6.000 | 8 |
| 99.ST.8230 | 40 | ER-32 - Ø2+20 | NO | 53 | 100 | 35 | 76 | 20 | 106 | 40 | 72,5 | 63 | 5.000 | 10 |
| 99.ST.8231 | 50 | ER-40 - Ø3+30 | NO | 78 | 110 | 44 | 88 | 31 | 123 | 44 | 80,5 | 100 | 4.000 | 12 |
| 99.ST.8232 | 60 | ER-50 - Ø7+34 | NO | 94 | 135 | 55 | 110 | 67 | 184 | 43 | 103 | 160 | 3.200 | 15 |

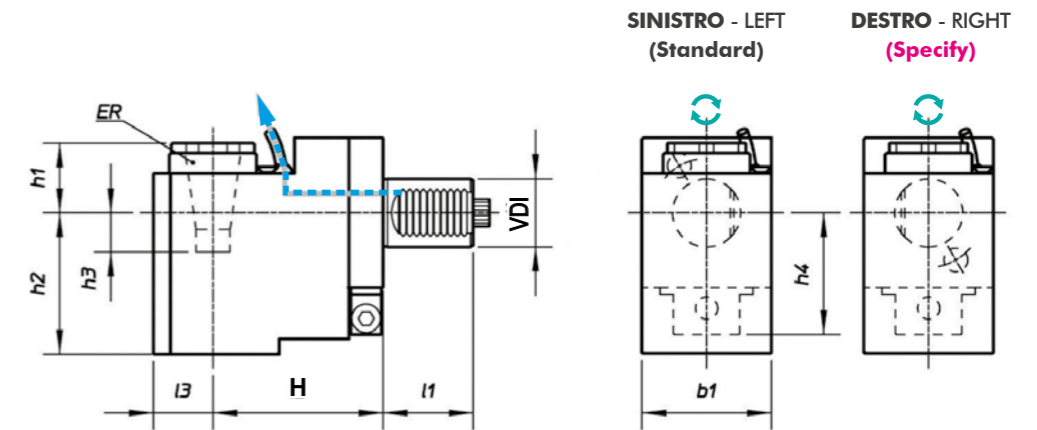
4

4



| | | | | | | | | | |
|--|--------------------------------|--|---|--|-------------------------------|--|--------------|--|--|
| | TIPO - TYPE Radial - Radial | | USCITA - OUTPUT Porta Pinza Collet Chuck | | REFRIGERANTE COOLANT 25BAR | | RATIO 1:1 | | ROTAZIONE - ROTATION Opposto al mandrino Opposite to machine spindle |
|--|--------------------------------|--|---|--|-------------------------------|--|--------------|--|--|

| Code | VDI | Output | Int Cool. | l1 | H | l3 | b1 | h1 | h2 | h3 | h4 | Nm | Rpm | kw |
|------------|-----|---------------|-----------|----|-----|----|-----|-----|------|----|------|-----|-------|----|
| 99.ST.8223 | 30 | ER-25 - Ø1+16 | ✓ | 45 | 55 | 31 | 64 | 56 | 60 | 2 | 52 | 32 | 6.000 | 8 |
| 99.ST.8226 | 40 | ER-32 - Ø2+20 | ✓ | 53 | 100 | 35 | 76 | 71 | 62 | 11 | 71 | 63 | 5.000 | 10 |
| 99.ST.8227 | 50 | ER-40 - Ø3+30 | ✓ | 78 | 110 | 44 | 88 | 105 | 79,5 | 17 | 80,5 | 100 | 4.000 | 12 |
| 99.ST.8228 | 60 | ER-50 - Ø7+34 | ✓ | 94 | 130 | 55 | 110 | 157 | 102 | 39 | 103 | 160 | 3.200 | 15 |



| | | | | | | | | | |
|--|--------------------------------------|--|---|--|-------------------------------|--|--------------|--|---|
| | TIPO - TYPE Arretrato Rear Offset | | USCITA - OUTPUT Porta Pinza Collet Chuck | | REFRIGERANTE COOLANT 25BAR | | RATIO 1:1 | | ROTAZIONE - ROTATION Uguale al mandrino Same as machine spindle |
|--|--------------------------------------|--|---|--|-------------------------------|--|--------------|--|---|

| Code | VDI | Output | Int Cool. | l1 | H | l3 | b1 | h1 | h2 | h3 | h4 | Nm | Rpm | kw |
|------------|-----|---------------|-----------|----|-----|----|----|----|-------|------|------|-----|-------|----|
| 99.ST.8233 | 30 | ER-25 - Ø1+16 | ✓ | 45 | 85 | 31 | 64 | 24 | 105,5 | 45,5 | 52 | 32 | 6.000 | 8 |
| 99.ST.8234 | 40 | ER-32 - Ø2+20 | ✓ | 53 | 100 | 35 | 76 | 30 | 124 | 40 | 72,5 | 63 | 5.000 | 10 |
| 99.ST.8235 | 50 | ER-40 - Ø3+30 | ✓ | 78 | 110 | 44 | 88 | 44 | 140,5 | 44 | 80,5 | 100 | 4.000 | 12 |

MODELLI DI TORNIO COMPATIBILI
COMPATIBLE LATHE TYPES

VDI 20 / VDI 30 / VDI 40 / VDI 50 / VDI 60

Vedi pagine compatibilità 5.10 / 5.11 - See compatibility pages 5.10 / 5.11

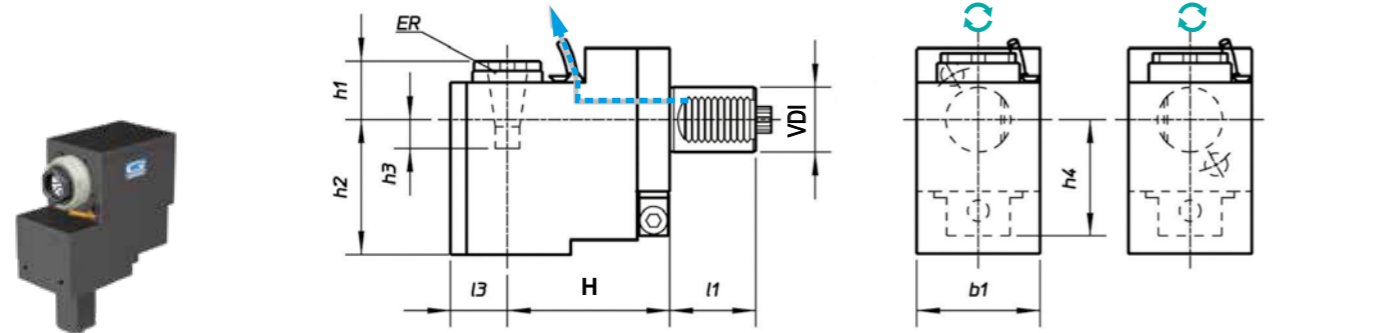
MODELLI DI TORNIO COMPATIBILI
COMPATIBLE LATHE TYPES

VDI 20 / VDI 30 / VDI 40 / VDI 50 / VDI 60

Vedi pagine compatibilità 5.10 / 5.11 - See compatibility pages 5.10 / 5.11

VDI
DIN 5482

SINISTRO - LEFT
(Standard) DESTRO - RIGHT
(Specify)

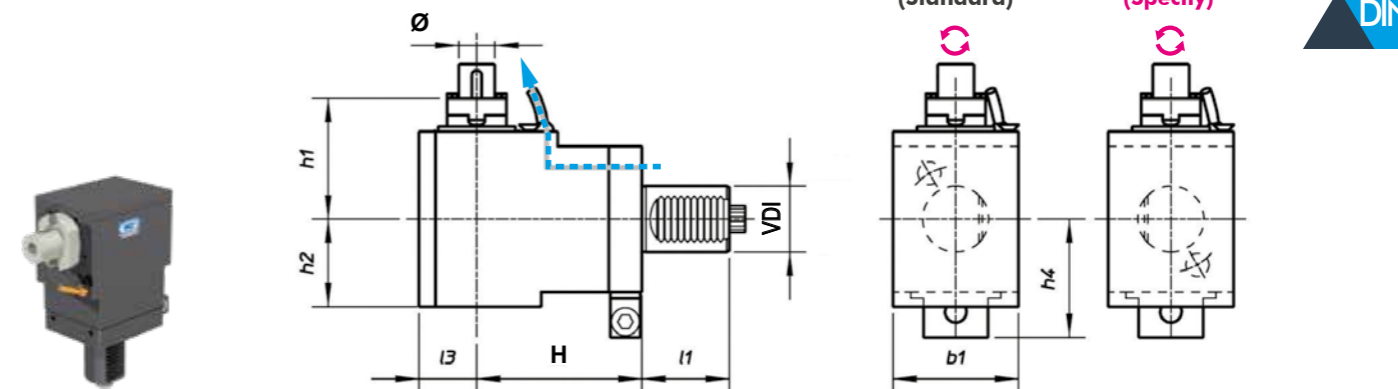


TIPO - TYPE: Arretrato Rear Offset
USCITA - OUTPUT: Porta Pinza Collet Chuck
REFRIGERANTE COOLANT: Esterno External
RATIO: 1:4
ROTAZIONE - ROTATION: Uguale al mandrino Same as machine spindle

| Code | VDI | Output | Int Cool. | l1 | H | l3 | b1 | h1 | h2 | h3 | h4 | Nm | Rpm | kw |
|------------|-----|---------------|-----------|----|-----|----|----|----|-----|----|------|----|--------|----|
| 99.ST.8237 | 30 | ER-16 - Ø1+10 | NO | 45 | 95 | 21 | 64 | 33 | 84 | 15 | 56 | 8 | 20.000 | 4 |
| 99.ST.8238 | 40 | ER-20 - Ø1+13 | NO | 53 | 125 | 27 | 76 | 45 | 108 | 10 | 65,5 | 16 | 16.000 | 5 |
| 99.ST.8239 | 50 | ER-20 - Ø1+13 | NO | 78 | 135 | 27 | 86 | 45 | 113 | 10 | 73,5 | 25 | 16.000 | 6 |

VDI
DIN 5482

SINISTRO - LEFT
(Standard) DESTRO - RIGHT
(Specify)

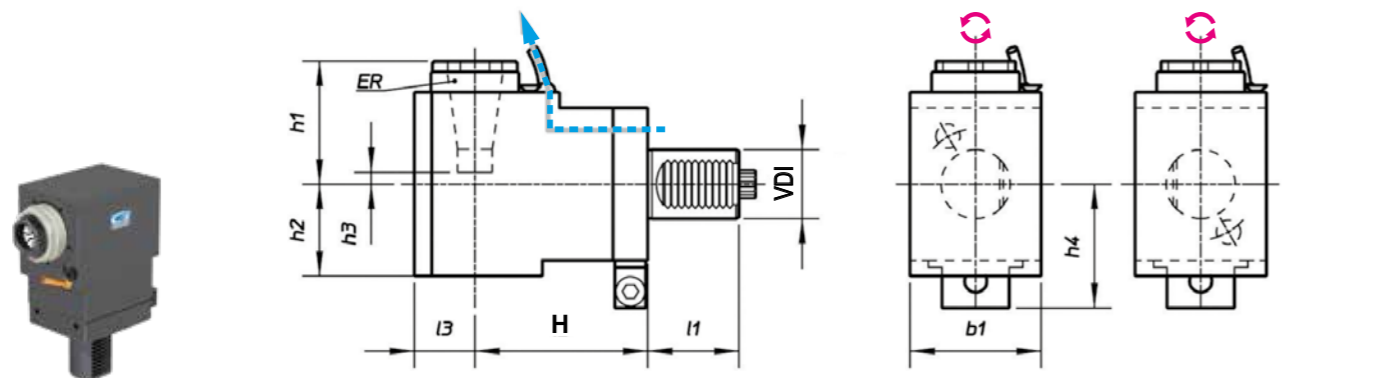


TIPO - TYPE: Radial - Radial
USCITA - OUTPUT: Porta Fresa Shell End Milling Cutter
REFRIGERANTE COOLANT: Esterno External
RATIO: 1:1
ROTAZIONE - ROTATION: Opposto al mandrino Opposite to machine spindle

| Code | VDI | Output | Int Cool. | l1 | H | l3 | b1 | h1 | h2 | h4 | Nm | Rpm | kw |
|------------|-----|--------|-----------|----|-----|----|----|----|----|------|----|-------|----|
| 99.ST.8242 | 30 | Ø22 | NO | 45 | 55 | 31 | 64 | 74 | 48 | 52 | 63 | 2.500 | 8 |
| 99.ST.8243 | 40 | Ø22 | NO | 53 | 100 | 35 | 76 | 78 | 55 | 72,5 | 63 | 2.000 | 8 |

4

SINISTRO - LEFT
(Standard) DESTRO - RIGHT
(Specify)

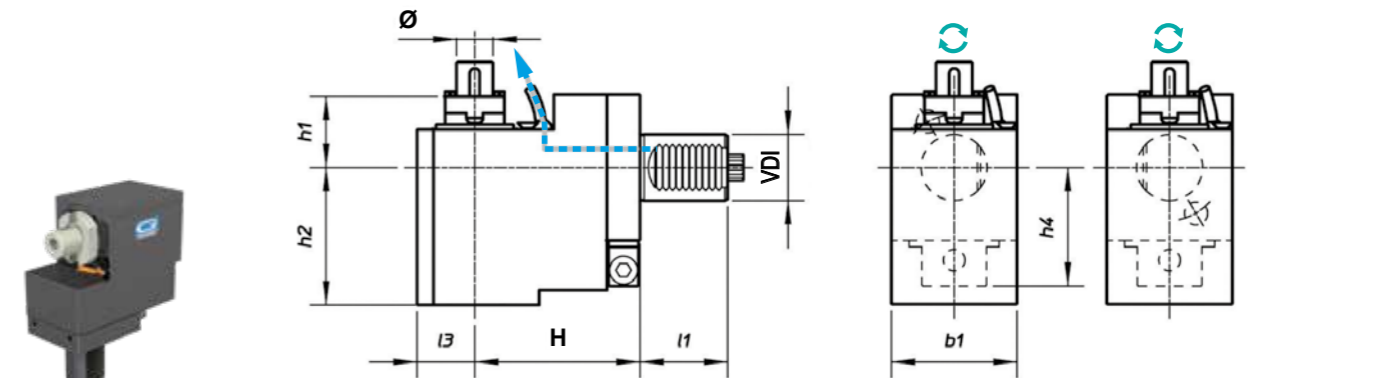


TIPO - TYPE: Radial - Radial
USCITA - OUTPUT: Porta Pinza Collet Chuck
REFRIGERANTE COOLANT: Esterno External
RATIO: 2:1
ROTAZIONE - ROTATION: Opposto al mandrino Opposite to machine spindle

| Code | VDI | Output | Int Cool. | l1 | H | l3 | km | h1 | h2 | h3 | h4 | Nm | Rpm | kw |
|------------|-----|---------------|-----------|----|-----|----|----|------|----|-----|------|----|-------|----|
| 99.ST.8240 | 30 | ER-25 - Ø1+16 | NO | 45 | 55 | 31 | 64 | 56,5 | 48 | 3 | 52 | 63 | 2.500 | 8 |
| 99.ST.8241 | 40 | ER-32 - Ø2+20 | NO | 53 | 100 | 35 | 76 | 71 | 55 | -11 | 72,5 | 63 | 2.000 | 8 |

4

SINISTRO - LEFT
(Standard) DESTRO - RIGHT
(Specify)



TIPO - TYPE: Arretrato Rear Offset
USCITA - OUTPUT: Porta Fresa Shell End Milling Cutter
REFRIGERANTE COOLANT: Esterno External
RATIO: 1:1
ROTAZIONE - ROTATION: Uguale al mandrino Same as machine spindle

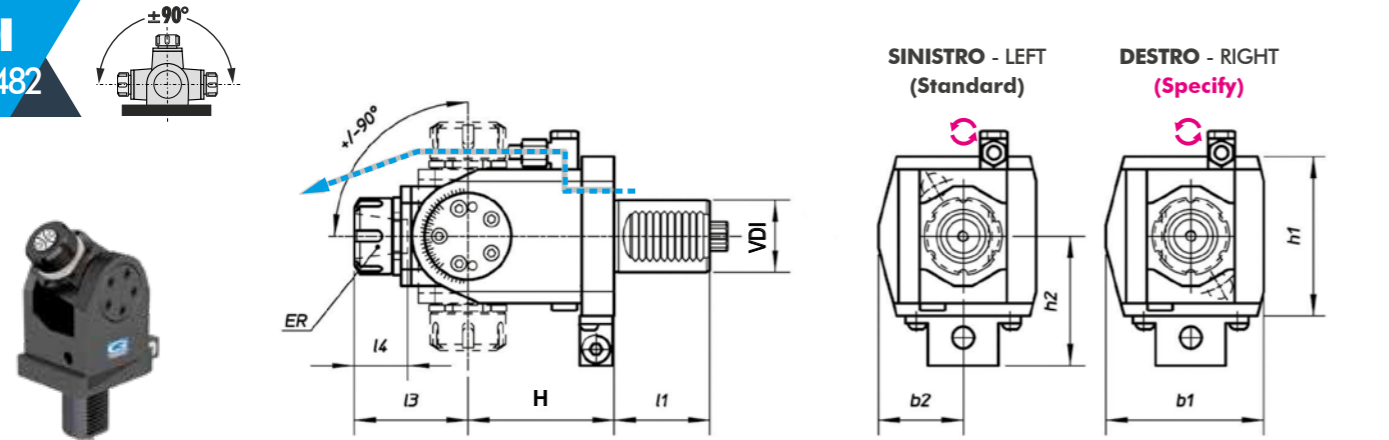
| Code | VDI | Output | Int Cool. | l1 | H | l3 | b1 | h1 | h2 | h4 | Nm | Rpm | kw |
|------------|-----|--------|-----------|----|-----|----|----|----|-----|------|----|-------|----|
| 99.ST.8244 | 30 | Ø22 | NO | 45 | 85 | 31 | 64 | 32 | 90 | 52 | 32 | 2.500 | 8 |
| 99.ST.8245 | 40 | Ø22 | NO | 53 | 100 | 35 | 76 | 27 | 106 | 72,5 | 63 | 4.000 | 10 |

MODELLI DI TORNIO COMPATIBILI
COMPATIBLE LATHE TYPES

VDI 20 / VDI 30 / VDI 40 / VDI 50 / VDI 60

Vedi pagine compatibilità 5.10 / 5.11 - See compatibility pages 5.10 / 5.11

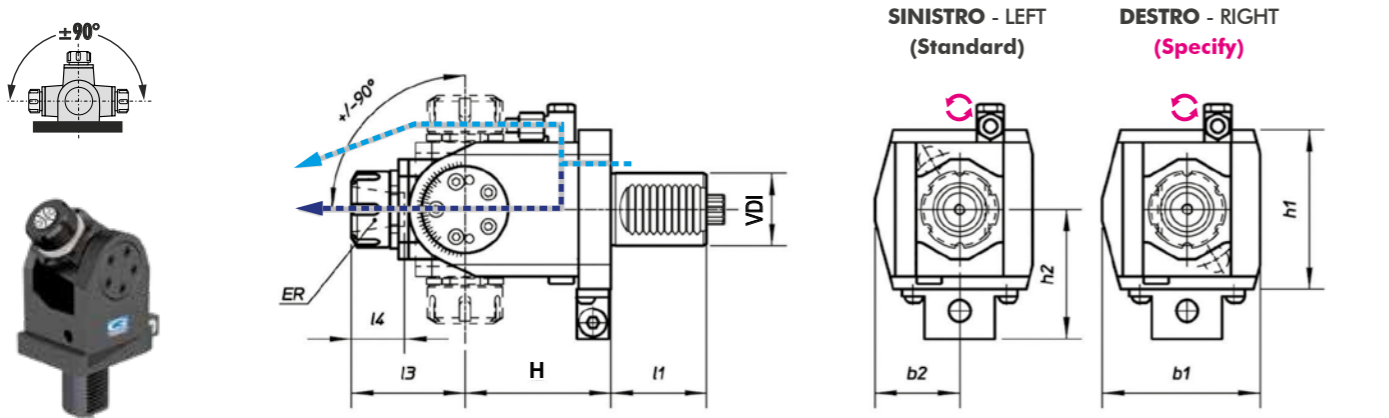
VDI
DIN 5482



| | | | | | | | | | |
|--|---|--|--|--|---|--|--------------|--|--|
| | TIPO - TYPE Orientabile Adjustable ±90° | | USCITA - OUTPUT Porta Pinza Collet Chuck | | REFRIGERANTE COOLANT Esterno External | | RATIO 1:1 | | ROTAZIONE - ROTATION Opposto al mandrino Opposite to machine spindle |
|--|---|--|--|--|---|--|--------------|--|--|

| Code | VDI | Output | Int Cool. | I1 | H | I3 | I4 | b1 | b2 | h1 | h2 | Nm | Rpm | kw |
|------------|-----|---------------|-----------|----|-----|----|----|----|----|----|----|----|-------|----|
| 99.ST.8248 | 30 | ER-20 - Ø1+13 | NO | 45 | 64 | 52 | 37 | 70 | 37 | 64 | 54 | 15 | 6.000 | 3 |
| 99.ST.8249 | 30 | ER-20 - Ø1+13 | NO | 45 | 97 | 52 | 37 | 70 | 37 | 64 | 54 | 15 | 6.000 | 3 |
| 99.ST.8250 | 40 | ER-25 - Ø1+16 | NO | 53 | 81 | 63 | 42 | 87 | 47 | 88 | 71 | 25 | 5.000 | 4 |
| 99.ST.8251 | 50 | ER-25 - Ø1+16 | NO | 78 | 100 | 67 | 47 | 91 | 54 | 88 | 72 | 25 | 4.000 | 6 |

4



| | | | | | | | | | |
|--|---|--|--|--|-------------------------------|--|--------------|--|--|
| | TIPO - TYPE Orientabile Adjustable ±90° | | USCITA - OUTPUT Porta Pinza Collet Chuck | | REFRIGERANTE COOLANT 25BAR | | RATIO 1:1 | | ROTAZIONE - ROTATION Opposto al mandrino Opposite to machine spindle |
|--|---|--|--|--|-------------------------------|--|--------------|--|--|

| Code | VDI | Output | Int Cool. | I1 | H | I3 | I4 | b1 | b2 | h1 | h2 | Nm | Rpm | kw |
|------------|-----|---------------|-----------|----|----|----|----|----|----|----|----|----|------|----|
| 99.ST.8254 | 30 | ER-20 - Ø1+13 | ✓ | 45 | 97 | 52 | 37 | 70 | 37 | 64 | 54 | 15 | 6000 | 3 |
| 99.ST.8255 | 40 | ER-25 - Ø1+16 | ✓ | 53 | 81 | 63 | 42 | 87 | 47 | 88 | 71 | 25 | 5000 | 4 |

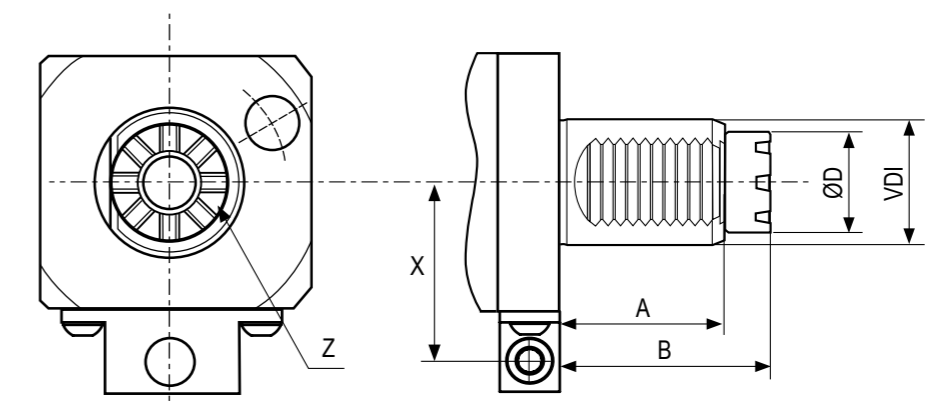
VDI 20 - 30 - 40 - 50 - 60



BARUFFALDI



4



| VDI | A | B | ØD | Z (N° denti - Teeth) | X |
|-----|----|-----|----|----------------------|----|
| 20 | 35 | 44 | 19 | 6 | 50 |
| 30 | 45 | 59 | 24 | 6 | 40 |
| 40 | 53 | 68 | 32 | 8 | 63 |
| 50 | 70 | 84 | 40 | 8 | 70 |
| 60 | 83 | 100 | 43 | 8 | - |



DOTAZIONE STANDARD
STANDARD EQUIPMENT

Chiave bloccaggio albero Art.179CH /
ugello refrigerazione Art.180 / vite bloccaggio ugello
Art.179CH shaft lock wrench /
cooling nozzle Art.180 / nozzle lock screws



CAMBI RAPIDI MODULARI Vedi pag. 7.12 - 7.15
MODULAR QUICK CHANGE See page 7.12 - 7.15

Facile e veloce sistema modulare per il cambio rapido delle diverse
tipologie di portautensili con la sede per pinza ER (DIN6499).
Modular toolholder system for the fitting of toolholders in
a spindle unit with ER collets (DIN6499) outputs.

MODELLI DI TORNIO COMPATIBILI
COMPATIBLE LATHE TYPES

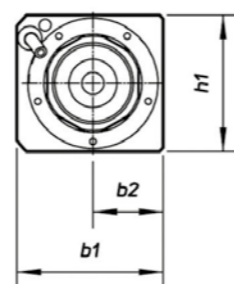
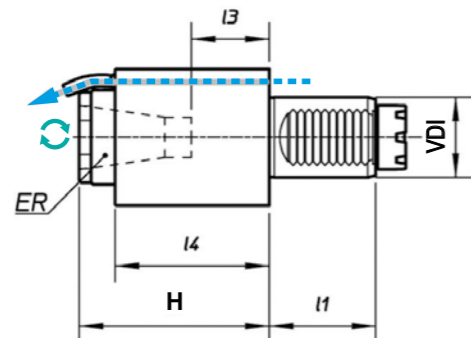
VDI 20 / VDI 30 / VDI 40 / VDI 50 / VDI 60

Vedi pagine compatibilità 5.10 / 5.11 - See compatibility pages 5.10 / 5.11

MODELLI DI TORNIO COMPATIBILI
COMPATIBLE LATHE TYPES

VDI 20 / VDI 30 / VDI 40 / VDI 50 / VDI 60

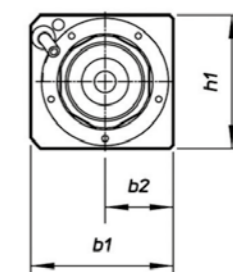
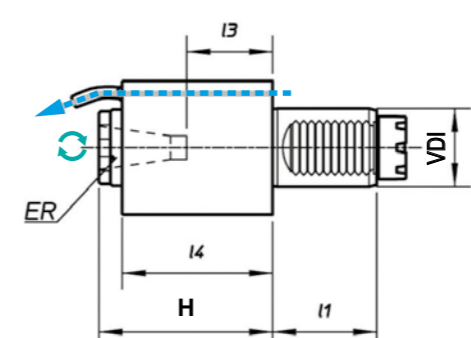
Vedi pagine compatibilità 5.10 / 5.11 - See compatibility pages 5.10 / 5.11



Per dischi assiali - For axial tool discs

TIPO - TYPE: Assiale - Axial
 USCITA - OUTPUT: Porta Pinza Collet Chuck
 REFRIGERANTE COOLANT: Esterno External
 RATIO: 1:1
 ROTAZIONE - ROTATION: Uguale al mandrino Same as machine spindle

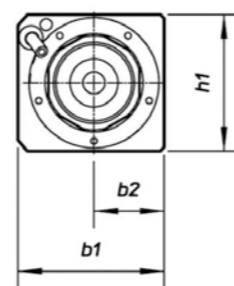
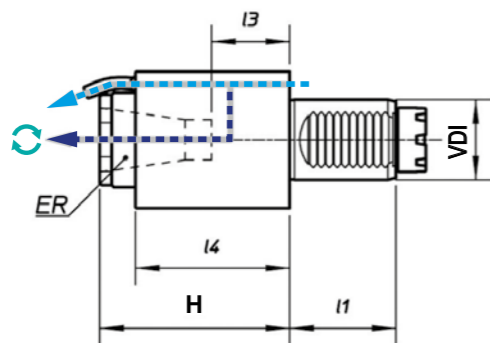
| Code | VDI | Output | Int Cool. | I1 | H | I3 | I4 | b1 | b2 | h1 | Nm | Rpm | kw |
|------------|-----|---------------|-----------|----|-----|----|-----|-----|----|-----|-----|-------|----|
| 99.BF.0001 | 20 | ER-20 - Ø1+13 | NO | 35 | 90 | 49 | 61 | 50 | 25 | 56 | 13 | 6.000 | 5 |
| 99.BF.0002 | 20 | ER-20 - Ø1+13 | NO | 35 | 65 | 25 | 37 | 50 | 25 | 56 | 13 | 6.000 | 5 |
| 99.BF.0003 | 30 | ER-25 - Ø1+16 | NO | 45 | 94 | 39 | 88 | 62 | 31 | 64 | 32 | 6.000 | 8 |
| 99.BF.0005 | 40 | ER-32 - Ø2+20 | NO | 53 | 117 | 57 | 99 | 73 | 35 | 70 | 63 | 5.000 | 10 |
| 99.BF.0007 | 50 | ER-40 - Ø3+30 | NO | 70 | 120 | 45 | 102 | 88 | 44 | 88 | 100 | 4.000 | 12 |
| 99.BF.0009 | 60 | ER-50 - Ø7+34 | NO | 83 | 170 | 69 | 109 | 110 | 55 | 110 | 160 | 3.200 | 15 |



Per dischi assiali - For axial tool discs

TIPO - TYPE: Assiale - Axial
 USCITA - OUTPUT: Porta Pinza Collet Chuck
 REFRIGERANTE COOLANT: Esterno External
 RATIO: 1:4
 ROTAZIONE - ROTATION: Uguale al mandrino Same as machine spindle

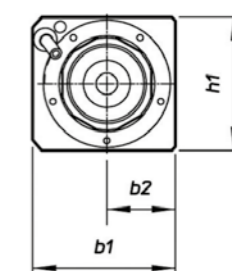
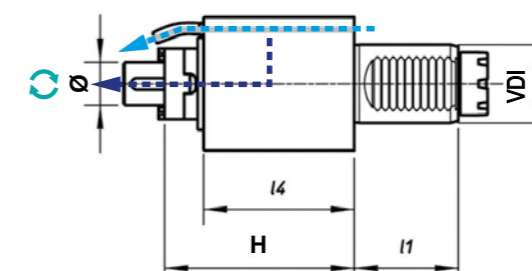
| Code | VDI | Output | Int Cool. | I1 | H | I3 | I4 | b1 | b2 | h1 | Nm | Rpm | kw |
|------------|-----|---------------|-----------|----|-------|------|-----|----|----|----|----|--------|----|
| 99.BF.0015 | 20 | ER-16 - Ø1+10 | NO | 35 | 100 | 68 | 85 | 50 | 25 | 56 | 3 | 24.000 | 3 |
| 99.BF.0016 | 30 | ER-16 - Ø1+10 | NO | 45 | 100 | 58 | 88 | 62 | 31 | 64 | 8 | 20.000 | 4 |
| 99.BF.0017 | 40 | ER-20 - Ø1+13 | NO | 53 | 112,5 | 74,5 | 106 | 76 | 38 | 76 | 16 | 16.000 | 5 |



Per dischi assiali - For axial tool discs

TIPO - TYPE: Assiale - Axial
 USCITA - OUTPUT: Porta Pinza Collet Chuck
 REFRIGERANTE COOLANT: 25BAR
 RATIO: 1:1
 ROTAZIONE - ROTATION: Uguale al mandrino Same as machine spindle

| Code | VDI | Output | Int Cool. | I1 | H | I3 | I4 | b1 | b2 | h1 | Nm | Rpm | kw |
|------------|-----|---------------|-----------|----|-----|----|-----|-----|----|-----|-----|-------|----|
| 99.BF.0010 | 30 | ER-25 - Ø1+16 | ✓ | 45 | 94 | 39 | 88 | 62 | 31 | 64 | 32 | 6.000 | 8 |
| 99.BF.0011 | 40 | ER-32 - Ø2+20 | ✓ | 53 | 115 | 54 | 97 | 73 | 35 | 70 | 63 | 5.000 | 10 |
| 99.BF.0013 | 50 | ER-40 - Ø3+30 | ✓ | 70 | 120 | 45 | 102 | 88 | 44 | 88 | 100 | 4.000 | 12 |
| 99.BF.0014 | 60 | ER-50 - Ø7+34 | ✓ | 83 | 170 | 69 | 109 | 110 | 55 | 110 | 160 | 3.200 | 15 |



Per dischi assiali - For axial tool discs

TIPO - TYPE: Assiale - Axial
 USCITA - OUTPUT: Porta Fresa Shell End Milling Cutter
 REFRIGERANTE COOLANT: 25BAR
 RATIO: 1:1
 ROTAZIONE - ROTATION: Uguale al mandrino Same as machine spindle

| Code | VDI | Output | Int Cool. | I1 | H | I4 | b1 | b2 | h1 | Nm | Rpm | kw |
|------------|-----|--------|-----------|----|-----|----|----|----|----|----|-------|----|
| 99.BF.0018 | 30 | Ø22 | ✓ | 45 | 112 | 88 | 62 | 31 | 64 | 32 | 5.000 | 8 |
| 99.BF.0019 | 40 | Ø22 | ✓ | 53 | 124 | 99 | 73 | 35 | 70 | 63 | 4.000 | 10 |

MODELLI DI TORNO COMPATIBILI
COMPATIBLE LATHE TYPES

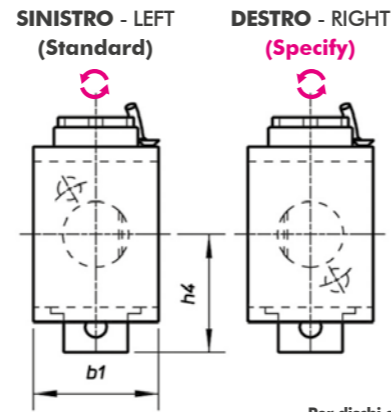
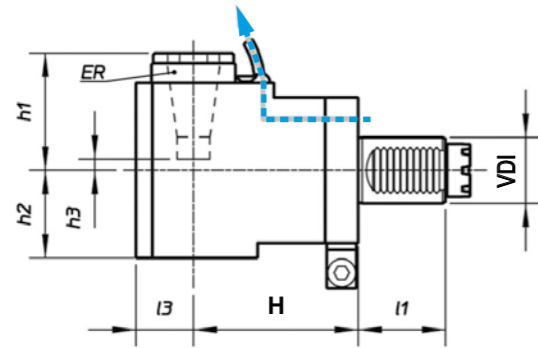
VDI 20 / VDI 30 / VDI 40 / VDI 50 / VDI 60

Vedi pagine compatibilità 5.10 / 5.11 - See compatibility pages 5.10 / 5.11

MODELLI DI TORNO COMPATIBILI
COMPATIBLE LATHE TYPES

VDI 20 / VDI 30 / VDI 40 / VDI 50 / VDI 60

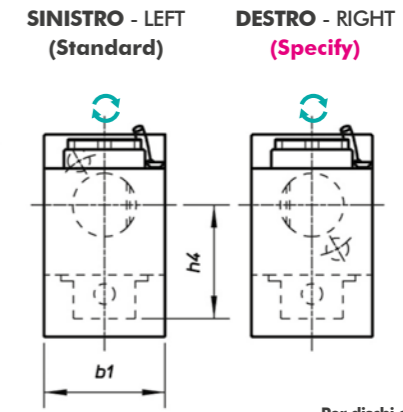
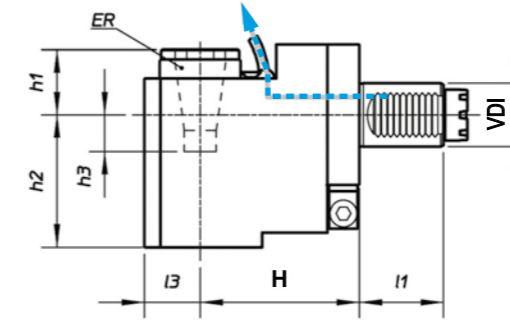
Vedi pagine compatibilità 5.10 / 5.11 - See compatibility pages 5.10 / 5.11



Per dischi assiali - For axial tool discs

| | | | | | | | | | |
|--|---------------------------------|--|---|--|--|--|--------------|--|---|
| | TIPO - TYPE Radiale - Radial | | USCITA - OUTPUT Porta Pinza Collet Chuck | | REFRIGERANTE COOLANT Esterno External | | RATIO 1:1 | | ROTAZIONE - ROTATION Opposto al mandrino Opposite to machine spindle |
|--|---------------------------------|--|---|--|--|--|--------------|--|---|

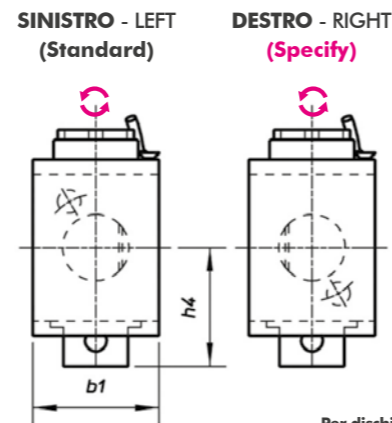
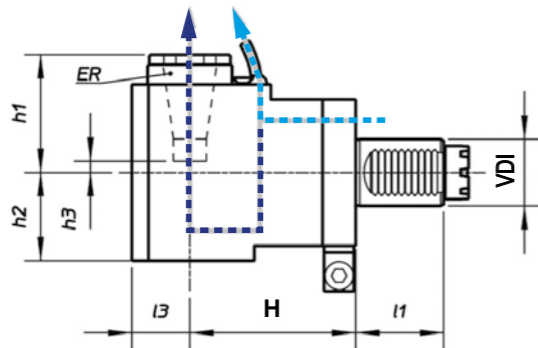
| Code | VDI | Output | Int Cool. | I1 | H | I3 | b1 | h1 | h2 | h3 | h4 | Nm | Rpm | kw |
|------------|-----|---------------|-----------|----|-----|----|-----|-----|----|----|-----|-----|-------|----|
| 99.BF.0020 | 20 | ER-20 - Ø1+13 | NO | 35 | 60 | 25 | 50 | 60 | 38 | 19 | 57 | 13 | 6.000 | 5 |
| 99.BF.0021 | 30 | ER-25 - Ø1+16 | NO | 45 | 55 | 31 | 64 | 56 | 48 | 3 | 52 | 32 | 6.000 | 8 |
| 99.BF.0022 | 30 | ER-25 - Ø1+16 | NO | 45 | 85 | 31 | 64 | 56 | 48 | 3 | 52 | 32 | 6.000 | 8 |
| 99.BF.0023 | 30 | ER-25 - Ø1+16 | NO | 45 | 100 | 31 | 64 | 56 | 48 | 3 | 52 | 32 | 6.000 | 8 |
| 99.BF.0024 | 40 | ER-32 - Ø2+20 | NO | 53 | 100 | 35 | 76 | 71 | 55 | 11 | 71 | 63 | 5.000 | 10 |
| 99.BF.0025 | 50 | ER-40 - Ø3+30 | NO | 70 | 110 | 44 | 88 | 92 | 73 | 16 | 79 | 100 | 4.000 | 12 |
| 99.BF.0026 | 60 | ER-50 - Ø7+34 | NO | 83 | 130 | 52 | 110 | 149 | 83 | 46 | 100 | 160 | 3.200 | 15 |



Per dischi assiali - For axial tool discs

| | | | | | | | | | |
|--|--------------------------------------|--|---|--|--|--|--------------|--|--|
| | TIPO - TYPE Arretrato Rear Offset | | USCITA - OUTPUT Porta Pinza Collet Chuck | | REFRIGERANTE COOLANT Esterno External | | RATIO 1:1 | | ROTAZIONE - ROTATION Uguale al mandrino Same as machine spindle |
|--|--------------------------------------|--|---|--|--|--|--------------|--|--|

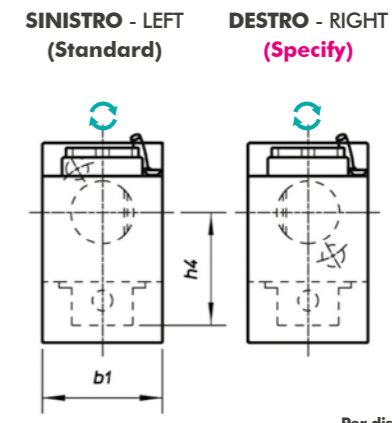
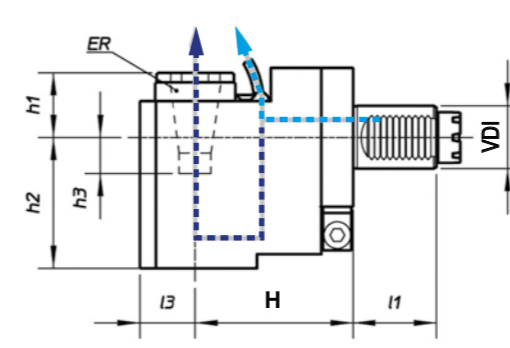
| Code | VDI | Output | Int Cool. | I1 | H | I3 | b1 | h1 | h2 | h3 | h4 | Nm | Rpm | kw |
|------------|-----|---------------|-----------|----|-----|----|----|------|-----|----|------|-----|-------|----|
| 99.BF.0033 | 20 | ER-16 - Ø1+10 | NO | 35 | 75 | 26 | 50 | 28 | 48 | 4 | 56 | 13 | 6.000 | 5 |
| 99.BF.0034 | 30 | ER-25 - Ø1+16 | NO | 45 | 85 | 31 | 64 | 14,5 | 90 | 45 | 52 | 32 | 5.000 | 8 |
| 99.BF.0035 | 40 | ER-32 - Ø2+20 | NO | 53 | 100 | 35 | 76 | 20 | 106 | 40 | 72,5 | 63 | 4.000 | 10 |
| 99.BF.0036 | 50 | ER-40 - Ø3+30 | NO | 70 | 110 | 44 | 88 | 31 | 136 | 46 | 79 | 100 | 4.000 | 12 |



Per dischi assiali - For axial tool discs

| | | | | | | | | | |
|--|---------------------------------|--|---|--|-------------------------------|--|--------------|--|---|
| | TIPO - TYPE Radiale - Radial | | USCITA - OUTPUT Porta Pinza Collet Chuck | | REFRIGERANTE COOLANT 25BAR | | RATIO 1:1 | | ROTAZIONE - ROTATION Opposto al mandrino Opposite to machine spindle |
|--|---------------------------------|--|---|--|-------------------------------|--|--------------|--|---|

| Code | VDI | Output | Int Cool. | I1 | H | I3 | b1 | h1 | h2 | h3 | h4 | Nm | Rpm | kw |
|------------|-----|---------------|-----------|----|-----|----|-----|-----|----|----|-----|-----|-------|----|
| 99.BF.0027 | 30 | ER-25 - Ø1+16 | ✓ | 45 | 55 | 31 | 64 | 56 | 60 | 3 | 52 | 32 | 6.000 | 8 |
| 99.BF.0028 | 30 | ER-25 - Ø1+16 | ✓ | 45 | 85 | 31 | 64 | 56 | 60 | 3 | 52 | 32 | 6.000 | 8 |
| 99.BF.0029 | 30 | ER-25 - Ø1+16 | ✓ | 45 | 100 | 31 | 64 | 56 | 60 | 3 | 52 | 32 | 6.000 | 8 |
| 99.BF.0030 | 40 | ER-32 - Ø2+20 | ✓ | 53 | 100 | 35 | 76 | 71 | 62 | 11 | 71 | 63 | 5.000 | 10 |
| 99.BF.0031 | 50 | ER-40 - Ø3+30 | ✓ | 70 | 110 | 44 | 88 | 92 | 73 | 16 | 79 | 100 | 4.000 | 12 |
| 99.BF.0032 | 60 | ER-50 - Ø7+34 | ✓ | 83 | 130 | 52 | 110 | 149 | 83 | 46 | 100 | 160 | 3.200 | 15 |



Per dischi assiali - For axial tool discs

| | | | | | | | | | |
|--|--------------------------------------|--|---|--|-------------------------------|--|--------------|--|--|
| | TIPO - TYPE Arretrato Rear Offset | | USCITA - OUTPUT Porta Pinza Collet Chuck | | REFRIGERANTE COOLANT 25BAR | | RATIO 1:1 | | ROTAZIONE - ROTATION Uguale al mandrino Same as machine spindle |
|--|--------------------------------------|--|---|--|-------------------------------|--|--------------|--|--|

| Code | VDI | Output | Int Cool. | I1 | H | I3 | b1 | h1 | h2 | h3 | h4 | Nm | Rpm | kw |
|------------|-----|---------------|-----------|----|-----|----|----|----|-------|------|------|-----|-------|----|
| 99.BF.0037 | 30 | ER-25 - Ø1+16 | ✓ | 45 | 85 | 31 | 64 | 24 | 105,5 | 45,5 | 52 | 32 | 5.000 | 8 |
| 99.BF.0038 | 40 | ER-32 - Ø2+20 | ✓ | 53 | 100 | 35 | 76 | 30 | 124 | 40 | 72,5 | 63 | 4.000 | 10 |
| 99.BF.0039 | 50 | ER-40 - Ø3+30 | ✓ | 70 | 110 | 44 | 88 | 44 | 136 | 46 | 79 | 100 | 4.000 | 12 |

MODELLI DI TORNIO COMPATIBILI
COMPATIBLE LATHE TYPES

VDI 20 / VDI 30 / VDI 40 / VDI 50 / VDI 60

Vedi pagine compatibilità 5.10 / 5.11 - See compatibility pages 5.10 / 5.11

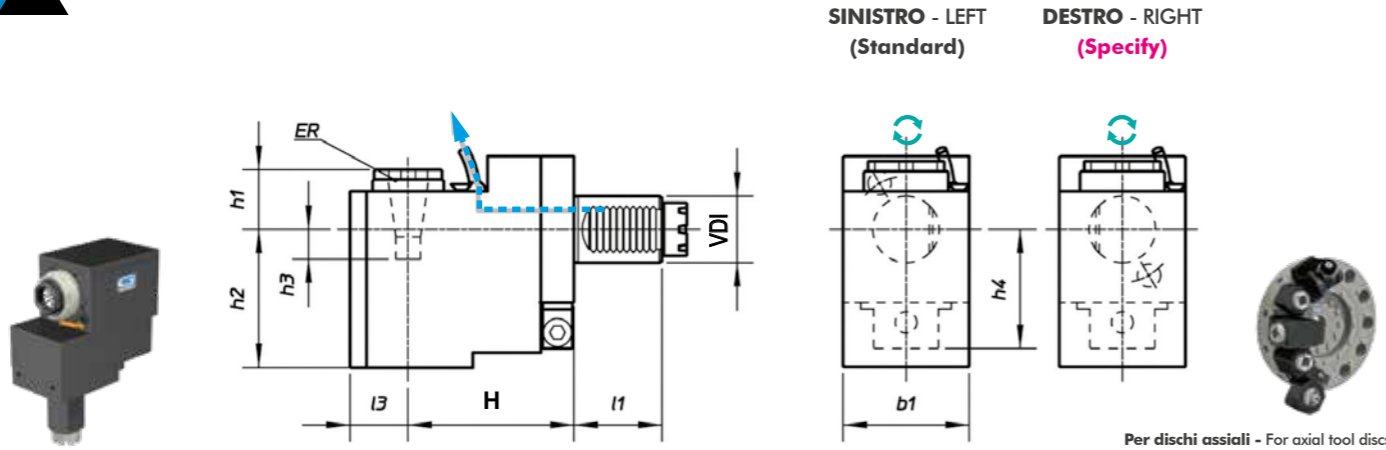
MODELLI DI TORNIO COMPATIBILI
COMPATIBLE LATHE TYPES

VDI 20 / VDI 30 / VDI 40 / VDI 50 / VDI 60

Vedi pagine compatibilità 5.10 / 5.11 - See compatibility pages 5.10 / 5.11

BARUFFALDI

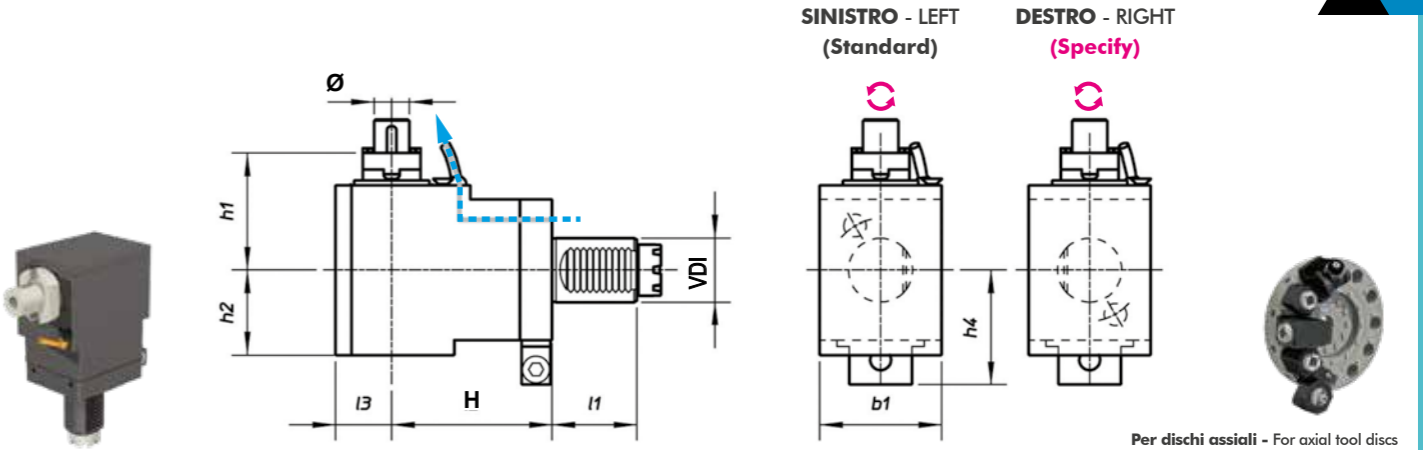
BARUFFALDI



Per dischi assiali - For axial tool discs

| | | | | | | | | | |
|--|---|--|--|--|--|--|--------------|--|---|
| | TIPO - TYPE Arretrato Rear Offset | | USCITA - OUTPUT Porta Pinza Collet Chuck | | REFRIGERANTE COOLANT Esterno External | | RATIO 1:4 | | ROTAZIONE - ROTATION Uguale al mandrino Same as machine spindle |
|--|---|--|--|--|--|--|--------------|--|---|

| Code | VDI | Output | Int Cool. | l1 | H | l3 | b1 | h1 | h2 | h3 | h4 | Nm | Rpm | kw |
|------------|-----|---------------|-----------|----|-----|----|----|----|-----|----|------|----|--------|----|
| 99.BF.0040 | 20 | ER-25 - Ø1+16 | NO | 35 | 75 | 26 | 50 | 28 | 48 | 4 | 56 | 3 | 24.000 | 3 |
| 99.BF.0041 | 30 | ER-25 - Ø1+16 | NO | 45 | 95 | 21 | 64 | 33 | 84 | 15 | 56 | 8 | 20.000 | 4 |
| 99.BF.0042 | 40 | ER-20 - Ø1+13 | NO | 53 | 125 | 27 | 76 | 45 | 108 | 10 | 65,5 | 16 | 16.000 | 5 |



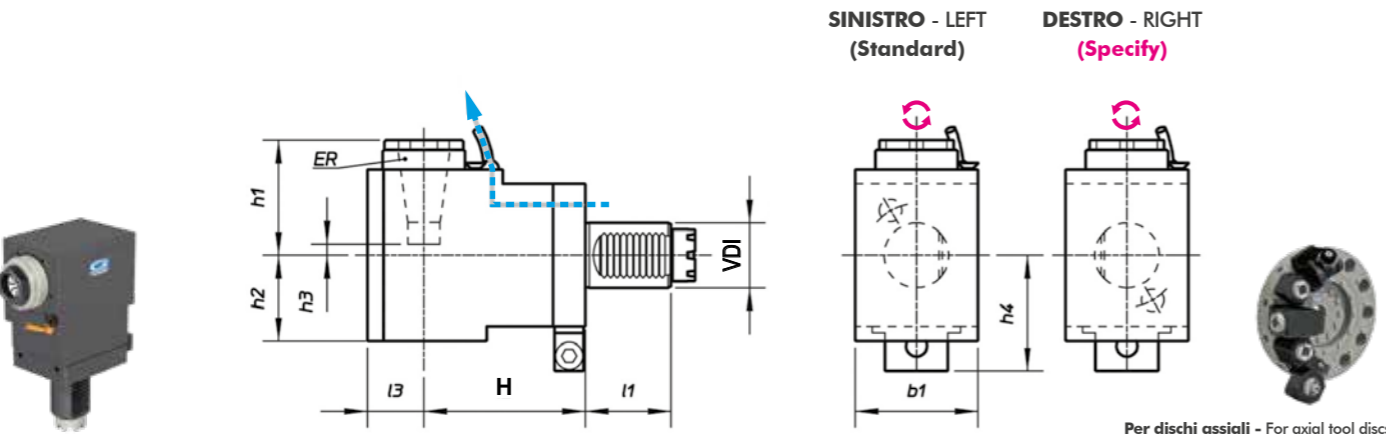
Per dischi assiali - For axial tool discs

| | | | | | | | | | |
|--|---------------------------------|--|--|--|--|--|--------------|--|--|
| | TIPO - TYPE Radiale - Radial | | USCITA - OUTPUT Porta Fresa Shell End Milling Cutter | | REFRIGERANTE COOLANT Esterno External | | RATIO 2:1 | | ROTAZIONE - ROTATION Opposto al mandrino Opposite to machine spindle |
|--|---------------------------------|--|--|--|--|--|--------------|--|--|

| Code | VDI | Output | Int Cool. | l1 | H | l3 | b1 | h1 | h2 | h4 | Nm | Rpm | kw |
|------------|-----|--------|-----------|----|-----|----|----|----|----|------|----|-------|----|
| 99.BF.0045 | 30 | Ø22 | NO | 45 | 55 | 31 | 64 | 74 | 48 | 52 | 63 | 2.500 | 8 |
| 99.BF.0046 | 40 | Ø22 | NO | 53 | 100 | 35 | 76 | 78 | 55 | 72,5 | 63 | 2.000 | 8 |

4

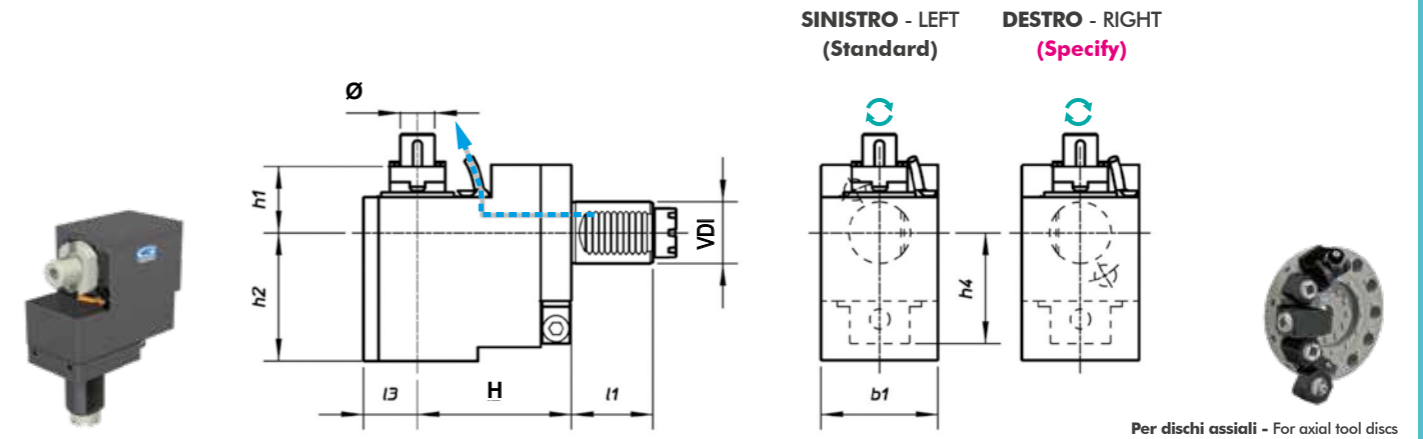
4



Per dischi assiali - For axial tool discs

| | | | | | | | | | |
|--|---------------------------------|--|--|--|--|--|--------------|--|--|
| | TIPO - TYPE Radiale - Radial | | USCITA - OUTPUT Porta Pinza Collet Chuck | | REFRIGERANTE COOLANT Esterno External | | RATIO 2:1 | | ROTAZIONE - ROTATION Opposto al mandrino Opposite to machine spindle |
|--|---------------------------------|--|--|--|--|--|--------------|--|--|

| Code | VDI | Output | Int Cool. | l1 | H | l3 | b1 | h1 | h2 | h3 | h4 | Nm | Rpm | kw |
|------------|-----|---------------|-----------|----|-----|----|----|------|----|-----|------|----|-------|----|
| 99.BF.0043 | 30 | ER-25 - Ø1+16 | NO | 45 | 55 | 31 | 64 | 56,5 | 48 | 3 | 52 | 63 | 2.500 | 8 |
| 99.BF.0044 | 40 | ER-32 - Ø2+20 | NO | 53 | 100 | 35 | 76 | 71 | 55 | -11 | 72,5 | 63 | 2.000 | 8 |



Per dischi assiali - For axial tool discs

| | | | | | | | | | |
|--|---|--|--|--|--|--|--------------|--|---|
| | TIPO - TYPE Arretrato Rear Offset | | USCITA - OUTPUT Porta Fresa Shell End Milling Cutter | | REFRIGERANTE COOLANT Esterno External | | RATIO 1:1 | | ROTAZIONE - ROTATION Uguale al mandrino Same as machine spindle |
|--|---|--|--|--|--|--|--------------|--|---|

| Code | VDI | Output | Int Cool. | l1 | H | l3 | b1 | h1 | h2 | h4 | Nm | Rpm | kw |
|------------|-----|--------|-----------|----|----|----|----|----|----|----|----|------|----|
| 99.BF.0047 | 30 | Ø22 | NO | 45 | 85 | 31 | 64 | 32 | 90 | 52 | 32 | 2500 | 8 |

MODELLI DI TORNIO COMPATIBILI
COMPATIBLE LATHE TYPES

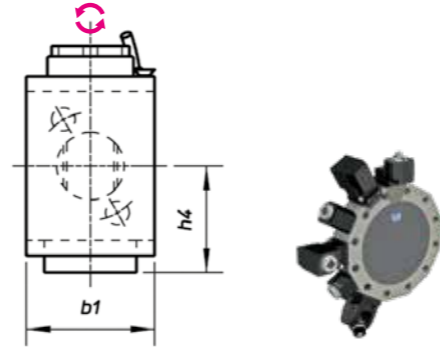
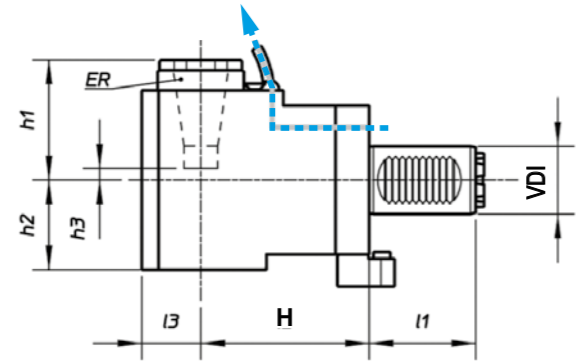
VDI 20 / VDI 30 / VDI 40 / VDI 50 / VDI 60

Vedi pagine compatibilità 5.10 / 5.11 - See compatibility pages 5.10 / 5.11

MODELLI DI TORNIO COMPATIBILI
COMPATIBLE LATHE TYPES

VDI 20 / VDI 30 / VDI 40 / VDI 50 / VDI 60

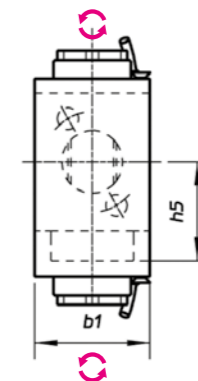
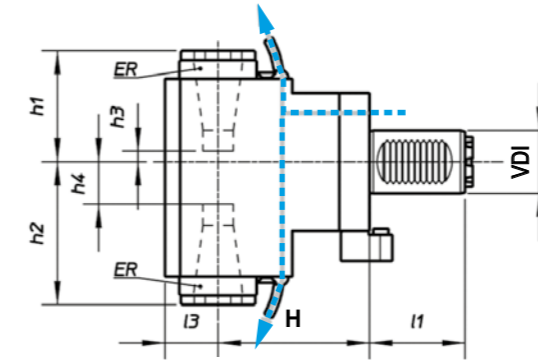
Vedi pagine compatibilità 5.10 / 5.11 - See compatibility pages 5.10 / 5.11



Per dischi radiali - For radial tool discs

| | | | | |
|---------------------------------|--|--|--------------|--|
| TIPO - TYPE Radiale - Radial | USCITA - OUTPUT Porta Pinza Collet Chuck | REFRIGERANTE COOLANT Esterno External | RATIO 1:1 | ROTAZIONE - ROTATION Opposto al mandrino Opposite to machine spindle |
|---------------------------------|--|--|--------------|--|

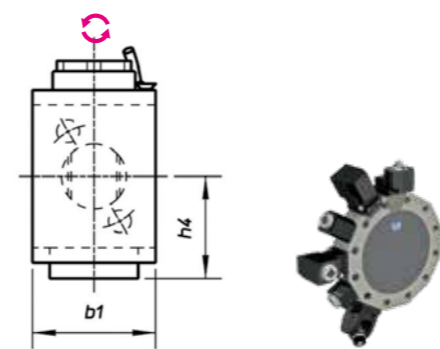
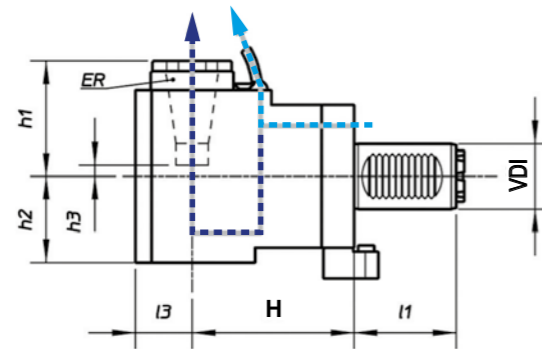
| Code | VDI | Output | Int Cool. | I1 | H | I3 | b1 | h1 | h2 | h3 | h4 | Nm | Rpm | kw |
|------------|-----|---------------|-----------|----|-----|----|----|----|----|----|----|-----|------|----|
| 99.BF.0057 | 30 | ER-25 - Ø1+16 | NO | 53 | 55 | 31 | 64 | 56 | 48 | 3 | 53 | 32 | 6000 | 8 |
| 99.BF.0058 | 30 | ER-25 - Ø1+16 | NO | 53 | 85 | 31 | 64 | 56 | 48 | 3 | 53 | 32 | 6000 | 8 |
| 99.BF.0059 | 30 | ER-25 - Ø1+16 | NO | 53 | 100 | 31 | 64 | 56 | 48 | 3 | 53 | 32 | 6000 | 8 |
| 99.BF.0060 | 50 | ER-40 - Ø3+30 | NO | 70 | 110 | 44 | 88 | 92 | 73 | 16 | 68 | 100 | 4000 | 12 |



Per dischi radiali - For radial tool discs

| | | | | |
|--|--|--|--------------|--|
| TIPO - TYPE Radiale Doppio Double Radial | USCITA - OUTPUT Porta Pinza Collet Chuck | REFRIGERANTE COOLANT Esterno External | RATIO 1:1 | ROTAZIONE - ROTATION Opposto al mandrino Opposite to machine spindle |
|--|--|--|--------------|--|

| Code | VDI | Output | Int Cool. | I1 | H | I3 | b1 | h1 | h2 | h3 | h4 | h5 | Nm | Rpm | kw |
|------------|-----|---------------|-----------|----|-----|----|----|----|-----|----|----|----|-----|------|----|
| 99.BF.0067 | 30 | ER-25 - Ø1+16 | NO | 53 | 110 | 31 | 64 | 56 | 68 | 7 | 23 | 53 | 32 | 6000 | 8 |
| 99.BF.0068 | 50 | ER-40 - Ø3+30 | NO | 70 | 140 | 44 | 88 | 93 | 106 | 39 | 52 | 68 | 100 | 4000 | 12 |



Per dischi radiali - For radial tool discs

| | | | | |
|---------------------------------|--|----------------------------------|--------------|--|
| TIPO - TYPE Radiale - Radial | USCITA - OUTPUT Porta Pinza Collet Chuck | REFRIGERANTE COOLANT 25BAR | RATIO 1:1 | ROTAZIONE - ROTATION Opposto al mandrino Opposite to machine spindle |
|---------------------------------|--|----------------------------------|--------------|--|

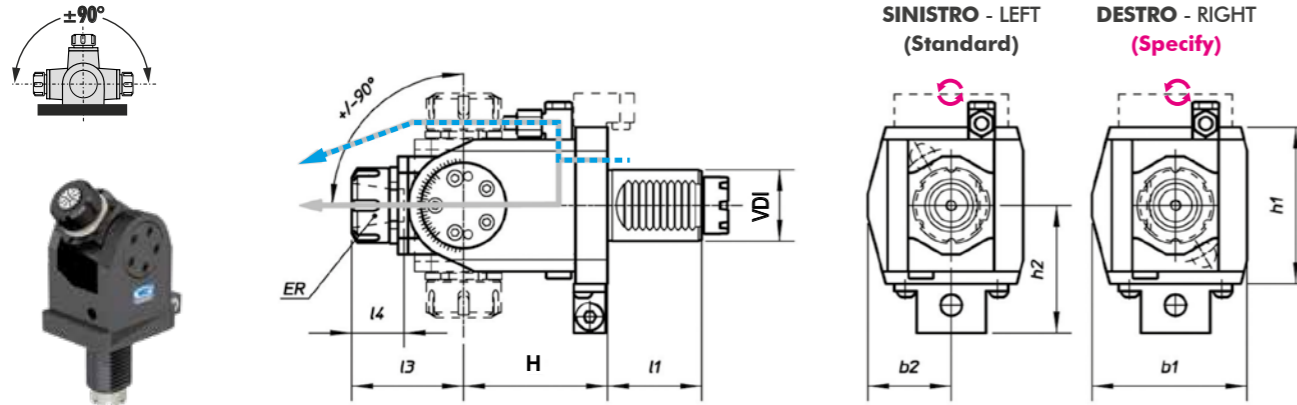
| Code | VDI | Output | Int Cool. | I1 | H | I3 | b1 | h1 | h2 | h3 | h4 | Nm | Rpm | kw |
|------------|-----|---------------|-----------|----|-----|----|----|----|----|----|----|-----|------|----|
| 99.BF.0061 | 30 | ER-25 - Ø1+16 | ✓ | 53 | 55 | 31 | 64 | 56 | 60 | 3 | 53 | 32 | 6000 | 8 |
| 99.BF.0062 | 30 | ER-25 - Ø1+16 | ✓ | 53 | 85 | 31 | 64 | 56 | 60 | 3 | 53 | 32 | 6000 | 8 |
| 99.BF.0063 | 30 | ER-25 - Ø1+16 | ✓ | 53 | 100 | 31 | 64 | 56 | 60 | 3 | 53 | 32 | 6000 | 8 |
| 99.BF.0064 | 50 | ER-40 - Ø3+30 | ✓ | 70 | 110 | 44 | 88 | 92 | 62 | 16 | 68 | 100 | 4000 | 12 |

MODELLI DI TORNIO COMPATIBILI
COMPATIBLE LATHE TYPES

VDI 20 / VDI 30 / VDI 40 / VDI 50 / VDI 60

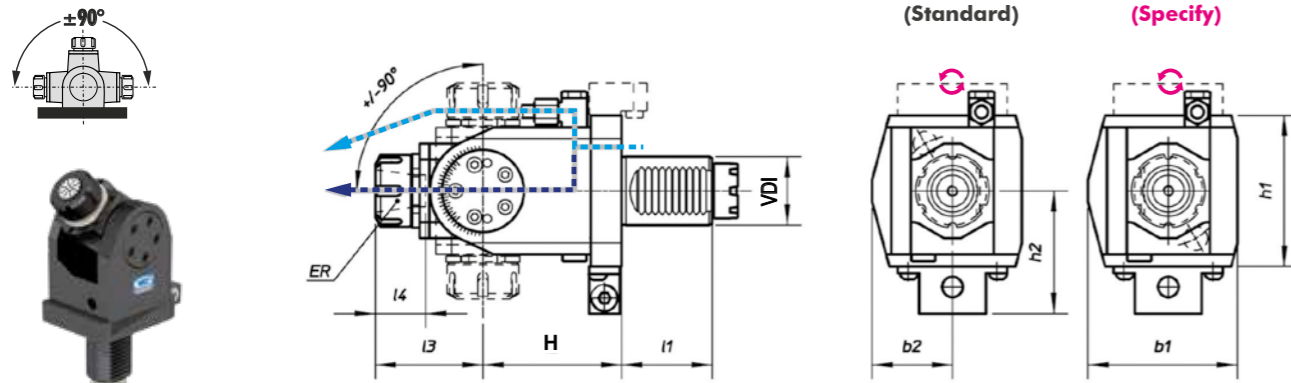
Vedi pagine compatibilità 5.10 / 5.11 - See compatibility pages 5.10 / 5.11

BARUFFALDI



| | | | | | | | | | |
|--|--|--|---|--|--|--|---------------------|--|---|
| | TIPO - TYPE Orientabile Adjustable ±90° | | USCITA - OUTPUT Porta Pinza Collet Chuck | | REFRIGERANTE COOLANT Esterno External | | RATIO 1:1 | | ROTAZIONE - ROTATION Opposto al mandrino Opposite to machine spindle |
|--|--|--|---|--|--|--|---------------------|--|---|

| Code | VDI | Output | Int Cool. | I1 | H | I3 | I4 | b1 | b2 | h1 | h2 | Nm | Rpm | kw |
|------------|-----|---------------|-----------|----|----|----|----|----|----|----|----|----|------|----|
| 99.BF.0051 | 30 | ER-20 - Ø1+13 | NO | 45 | 64 | 52 | 37 | 70 | 37 | 64 | 54 | 15 | 6000 | 3 |
| 99.BF.0052 | 30 | ER-20 - Ø1+13 | NO | 45 | 97 | 52 | 37 | 70 | 37 | 64 | 54 | 15 | 6000 | 3 |
| 99.BF.0053 | 40 | ER-25 - Ø1+16 | NO | 53 | 81 | 63 | 42 | 87 | 47 | 88 | 71 | 25 | 5000 | 4 |



| | | | | | | | | | |
|--|--|--|---|--|--------------------------------------|--|---------------------|--|---|
| | TIPO - TYPE Orientabile Adjustable ±90° | | USCITA - OUTPUT Porta Pinza Collet Chuck | | REFRIGERANTE COOLANT 25BAR | | RATIO 1:1 | | ROTAZIONE - ROTATION Opposto al mandrino Opposite to machine spindle |
|--|--|--|---|--|--------------------------------------|--|---------------------|--|---|

| Code | VDI | Output | Int Cool. | I1 | H | I3 | I4 | b1 | b2 | h1 | h2 | Nm | Rpm | kw |
|------------|-----|---------------|-----------|----|----|----|----|----|----|----|----|----|------|----|
| 99.BF.0054 | 30 | ER-20 - Ø1+13 | ✓ | 45 | 64 | 52 | 37 | 70 | 37 | 64 | 54 | 15 | 6000 | 3 |
| 99.BF.0055 | 30 | ER-20 - Ø1+13 | ✓ | 45 | 97 | 52 | 37 | 70 | 37 | 64 | 54 | 15 | 6000 | 3 |
| 99.BF.0056 | 40 | ER-25 - Ø1+16 | ✓ | 53 | 81 | 63 | 42 | 87 | 47 | 88 | 71 | 25 | 5000 | 4 |

VDI 20 - 30 - 40 - 50 - 60

VDI
DIN 1809

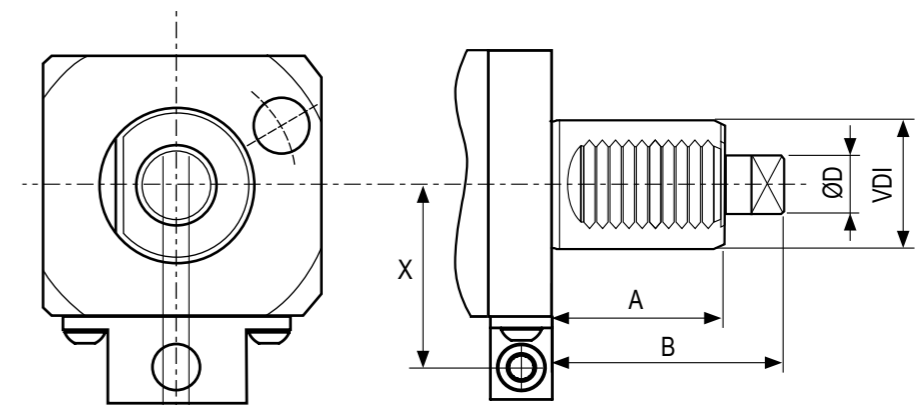


DIN 1809



4

4



| VDI | A | B | ØD | E | X |
|------|----|-----|----|----|-----------|
| 20 | 35 | 48 | 10 | 5 | 40 |
| 30 | 45 | 62 | 12 | 6 | 40 |
| 40 * | 53 | 72 | 18 | 8 | 56 / 63 * |
| 50 | 78 | 92 | 24 | 13 | 63 |
| 60 | 83 | 110 | 29 | 14 | - |

* VDI40: Specificare interasse X in fase d'ordine - Specify always the "X" pitch you need



DOTAZIONE STANDARD
STANDARD EQUIPMENT

Chiave bloccaggio albero Art.179CH /
ugello refrigerazione Art.180 / vite bloccaggio ugello
Art.179CH shaft lock wrench /
cooling nozzle Art.180 / nozzle lock screws



CAMBI RAPIDI MODULARI Vedi pag. 7.12 - 7.15
MODULAR QUICK CHANGE See page 7.12 - 7.15

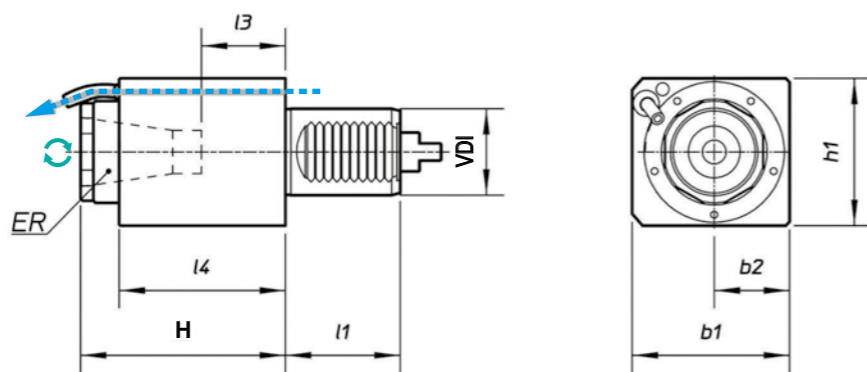
Facile e veloce sistema modulare per il cambio rapido delle diverse
tipologie di portautensili con la sede per pinza ER (DIN6499).
Modular toolholder system for the fitting of toolholders in
a spindle unit with ER collets (DIN6499) outputs.

MODELLI DI TORNIO COMPATIBILI
COMPATIBLE LATHE TYPES

VDI 20 / VDI 25 / VDI 30 / VDI 50 / VDI 60

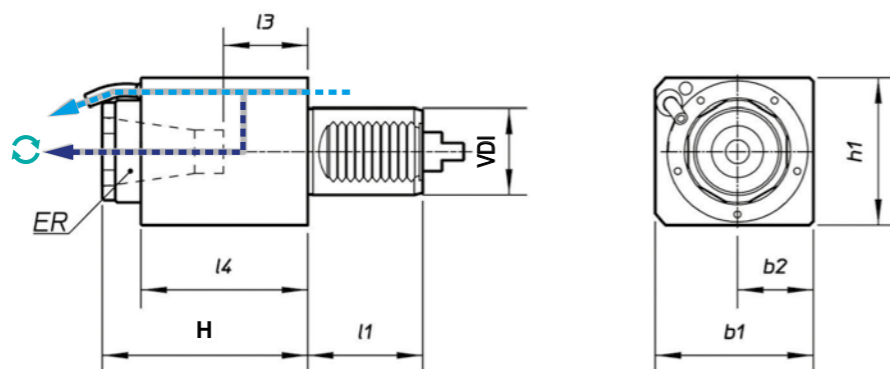
Vedi pagine compatibilità 5.10 / 5.11 - See compatibility pages 5.10 / 5.11

VDI
DIN 1809



TIPO - TYPE: Assiale - Axial
 USCITA - OUTPUT: Porta Pinza Collet Chuck
 REFRIGERANTE COOLANT: Esterno External
 RATIO: 1:1
 ROTAZIONE - ROTATION: Uguale al mandrino Same as machine spindle

| Code | VDI | Output | Int Cool. | l1 | H | l3 | l4 | b1 | b2 | h1 | Nm | Rpm | kw |
|------------|-----|---------------|-----------|----|-----|----|-----|-----|----|-----|-----|-------|----|
| 99.DP.0901 | 20 | ER-20 - Ø1+13 | NO | 35 | 65 | 25 | 37 | 50 | 25 | 56 | 13 | 6000 | 5 |
| 99.DP.0902 | 20 | ER-20 - Ø1+13 | NO | 35 | 90 | 49 | 61 | 50 | 25 | 56 | 13 | 6000 | 5 |
| 99.DP.0903 | 30 | ER-25 - Ø1+16 | NO | 45 | 94 | 39 | 88 | 62 | 31 | 64 | 32 | 6000 | 8 |
| 99.DP.0904 | 30 | ER-25 - Ø1+16 | NO | 45 | 66 | 21 | 59 | 62 | 31 | 64 | 32 | 6000 | 8 |
| 99.DP.0905 | 40 | ER-32 - Ø2+20 | NO | 53 | 115 | 54 | 97 | 73 | 35 | 70 | 63 | 5000 | 10 |
| 99.DP.0907 | 50 | ER-40 - Ø3+30 | NO | 70 | 120 | 45 | 102 | 88 | 44 | 88 | 100 | 4000 | 12 |
| 99.DP.0908 | 50 | ER-40 - Ø3+30 | NO | 70 | 88 | 69 | 25 | 88 | 44 | 88 | 100 | 4000 | 12 |
| 99.DP.0909 | 60 | ER-50 - Ø7+34 | NO | 83 | 170 | 69 | 109 | 110 | 55 | 110 | 160 | 3200 | 15 |
| 99.DP.0915 | 20 | ER-16 - Ø1+10 | NO | 35 | 100 | 68 | 85 | 50 | 25 | 56 | 3 | 24000 | 3 |
| 99.DP.0916 | 30 | ER-16 - Ø1+10 | NO | 45 | 100 | 58 | 88 | 62 | 31 | 64 | 8 | 20000 | 4 |



TIPO - TYPE: Assiale - Axial
 USCITA - OUTPUT: Porta Pinza Collet Chuck
 REFRIGERANTE COOLANT: 25BAR
 RATIO: 1:1
 ROTAZIONE - ROTATION: Uguale al mandrino Same as machine spindle

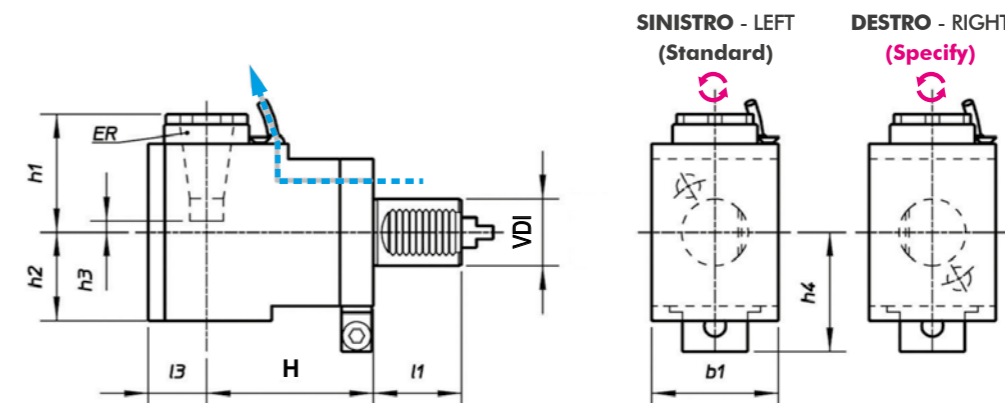
| Code | VDI | Output | Int Cool. | l1 | H | l3 | l4 | b1 | b2 | h1 | Nm | Rpm | kw |
|------------|-----|---------------|-----------|----|-----|----|-----|-----|----|-----|-----|------|----|
| 99.DP.0910 | 30 | ER-25 - Ø1+16 | ✓ | 45 | 94 | 39 | 88 | 62 | 31 | 64 | 32 | 6000 | 8 |
| 99.DP.0911 | 40 | ER-32 - Ø2+20 | ✓ | 53 | 115 | 54 | 97 | 73 | 35 | 70 | 63 | 5000 | 10 |
| 99.DP.0913 | 50 | ER-40 - Ø3+30 | ✓ | 70 | 120 | 45 | 102 | 88 | 44 | 88 | 100 | 4000 | 12 |
| 99.DP.0914 | 60 | ER-50 - Ø7+34 | ✓ | 83 | 170 | 69 | 109 | 110 | 55 | 110 | 160 | 3200 | 15 |

MODELLI DI TORNIO COMPATIBILI
COMPATIBLE LATHE TYPES

VDI 20 / VDI 25 / VDI 30 / VDI 50 / VDI 60

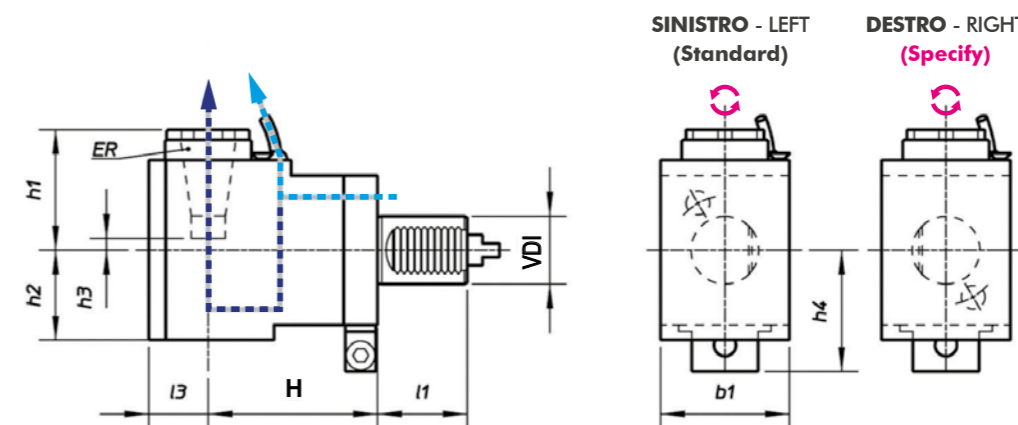
Vedi pagine compatibilità 5.10 / 5.11 - See compatibility pages 5.10 / 5.11

VDI
DIN 1809



TIPO - TYPE: Radiale - Radial
 USCITA - OUTPUT: Porta Pinza Collet Chuck
 REFRIGERANTE COOLANT: Esterno External
 RATIO: 1:1
 ROTAZIONE - ROTATION: Opposto al mandrino Opposite to machine spindle

| Code | VDI | Output | Int Cool. | l1 | H | l3 | b1 | h1 | h2 | h3 | h4 | Nm | Rpm | kw |
|------------|-----|---------------|-----------|----|-----|----|-----|-----|----|----|-----|-----|------|----|
| 99.DP.0918 | 20 | ER-20 - Ø1+13 | NO | 35 | 60 | 25 | 50 | 60 | 38 | 19 | 57 | 13 | 6000 | 5 |
| 99.DP.0919 | 30 | ER-25 - Ø1+16 | NO | 45 | 55 | 31 | 64 | 56 | 48 | 3 | 52 | 32 | 6000 | 8 |
| 99.DP.0920 | 30 | ER-25 - Ø1+16 | NO | 45 | 85 | 31 | 64 | 56 | 48 | 3 | 52 | 32 | 6000 | 8 |
| 99.DP.0921 | 30 | ER-25 - Ø1+16 | NO | 45 | 100 | 31 | 64 | 56 | 48 | 3 | 52 | 32 | 6000 | 8 |
| 99.DP.0922 | 40 | ER-32 - Ø2+20 | NO | 53 | 100 | 35 | 76 | 71 | 55 | 11 | 71 | 63 | 6000 | 10 |
| 99.DP.0923 | 50 | ER-40 - Ø3+30 | NO | 70 | 110 | 44 | 88 | 92 | 73 | 16 | 79 | 100 | 4000 | 12 |
| 99.DP.0924 | 60 | ER-50 - Ø7+34 | NO | 83 | 130 | 52 | 110 | 149 | 83 | 46 | 100 | 160 | 3200 | 15 |



TIPO - TYPE: Radiale - Radial
 USCITA - OUTPUT: Porta Pinza Collet Chuck
 REFRIGERANTE COOLANT: 25BAR
 RATIO: 1:1
 ROTAZIONE - ROTATION: Opposto al mandrino Opposite to machine spindle

| Code | VDI | Output | Int Cool. | l1 | H | l3 | b1 | h1 | h2 | h3 | h4 | Nm | Rpm | kw |
|------------|-----|---------------|-----------|----|-----|----|-----|-----|----|----|-----|-----|------|----|
| 99.DP.0925 | 30 | ER-25 - Ø1+16 | ✓ | 45 | 55 | 31 | 64 | 56 | 60 | 3 | 52 | 32 | 6000 | 8 |
| 99.DP.0926 | 30 | ER-25 - Ø1+16 | ✓ | 45 | 85 | 31 | 64 | 56 | 60 | 3 | 52 | 32 | 6000 | 8 |
| 99.DP.0927 | 30 | ER-25 - Ø1+16 | ✓ | 45 | 100 | 31 | 64 | 56 | 60 | 3 | 52 | 32 | 6000 | 8 |
| 99.DP.0928 | 40 | ER-32 - Ø2+20 | ✓ | 53 | 100 | 35 | 76 | 71 | 62 | 11 | 71 | 63 | 5000 | 10 |
| 99.DP.0929 | 50 | ER-40 - Ø3+30 | ✓ | 70 | 110 | 44 | 88 | 92 | 73 | 16 | 79 | 100 | 4000 | 12 |
| 99.DP.0930 | 60 | ER-50 - Ø7+34 | ✓ | 83 | 130 | 52 | 110 | 149 | 83 | 46 | 100 | 160 | 3200 | 15 |

MODELLI DI TORNIO COMPATIBILI
COMPATIBLE LATHE TYPES

VDI 20 / VDI 25 / VDI 30 / VDI 50 / VDI 60

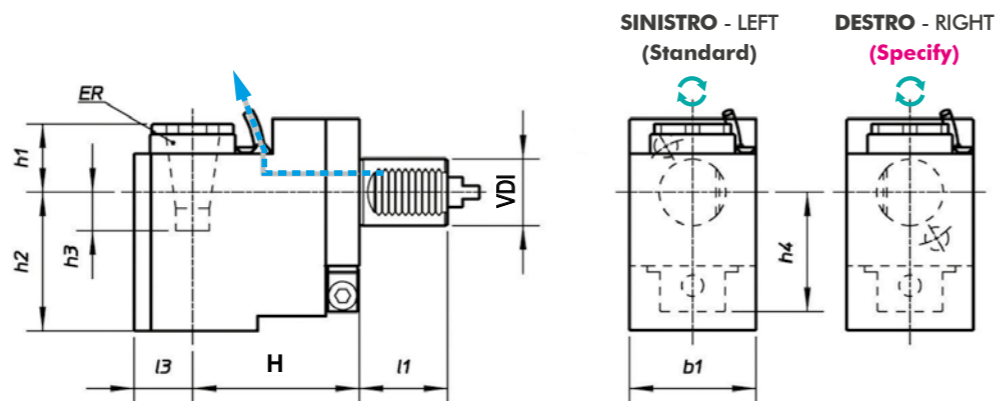
Vedi pagine compatibilità 5.10 / 5.11 - See compatibility pages 5.10 / 5.11

MODELLI DI TORNIO COMPATIBILI
COMPATIBLE LATHE TYPES

VDI 20 / VDI 25 / VDI 30 / VDI 50 / VDI 60

Vedi pagine compatibilità 5.10 / 5.11 - See compatibility pages 5.10 / 5.11

VDI
DIN 1809

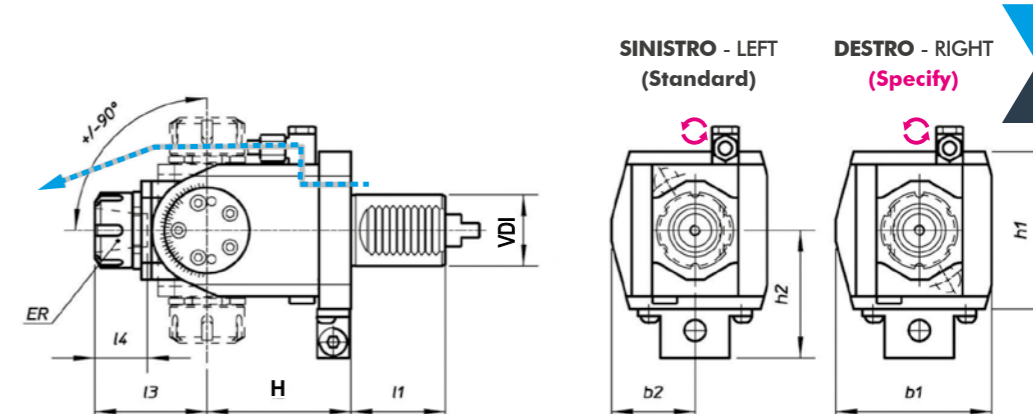
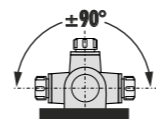


| | | | | | | | | | |
|--|--|--|---|--|--|--|---------------------|--|--|
| | TIPO - TYPE Arretrato Rear Offset | | USCITA - OUTPUT Porta Pinza Collet Chuck | | REFRIGERANTE COOLANT Esterno External | | RATIO 1:1 | | ROTAZIONE - ROTATION Ugualo al mandrino Same as machine spindle |
|--|--|--|---|--|--|--|---------------------|--|--|

| Code | VDI | Output | Int Cool. | l1 | H | l3 | b1 | h1 | h2 | h3 | h4 | Nm | Rpm | kw |
|------------|-----|---------------|-----------|----|-----|----|----|------|-----|----|------|-----|-------|----|
| 99.DP.0931 | 20 | ER-16 - Ø1+10 | NO | 35 | 75 | 26 | 50 | 28 | 48 | 4 | 56 | 13 | 6.000 | 5 |
| 99.DP.0932 | 30 | ER-25 - Ø1+16 | NO | 45 | 85 | 31 | 64 | 14,5 | 90 | 45 | 52 | 32 | 5.000 | 8 |
| 99.DP.0933 | 40 | ER-32 - Ø2+20 | NO | 53 | 100 | 35 | 76 | 20 | 106 | 40 | 72,5 | 63 | 4.000 | 10 |
| 99.DP.0934 | 50 | ER-40 - Ø3+30 | NO | 70 | 110 | 44 | 88 | 31 | 136 | 46 | 79 | 100 | 4.000 | 12 |

4

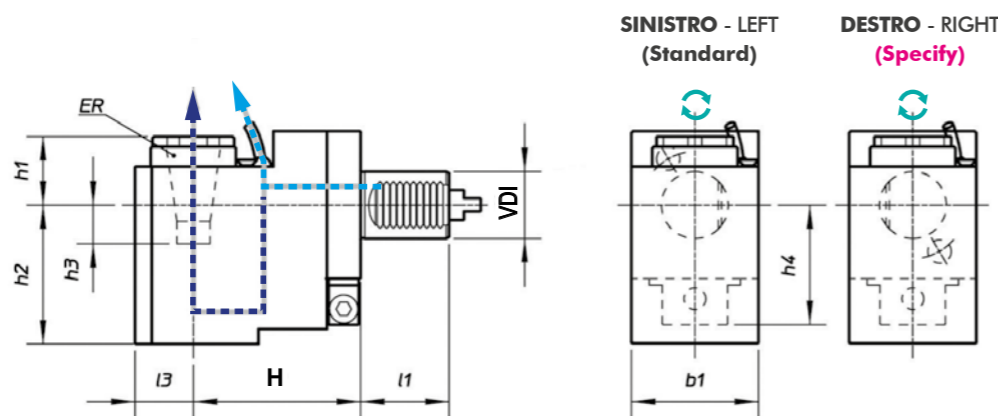
VDI
DIN 1809



| | | | | | | | | | |
|--|--|--|---|--|--|--|---------------------|--|---|
| | TIPO - TYPE Orientabile Adjustable ±90° | | USCITA - OUTPUT Porta Pinza Collet Chuck | | REFRIGERANTE COOLANT Esterno External | | RATIO 1:1 | | ROTAZIONE - ROTATION Opposto al mandrino Opposite to machine spindle |
|--|--|--|---|--|--|--|---------------------|--|---|

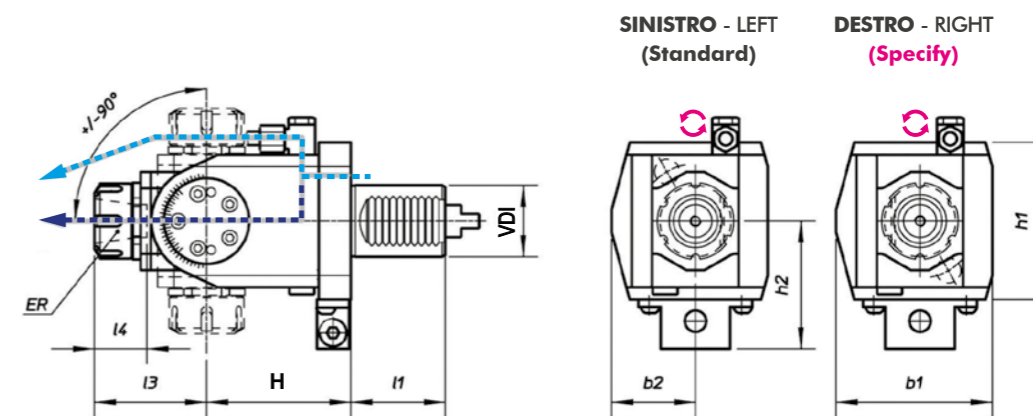
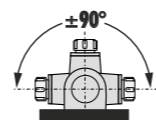
| Code | VDI | Output | Int Cool. | l1 | H | l3 | l4 | b1 | b2 | h1 | h2 | Nm | Rpm | kw |
|------------|-----|---------------|-----------|----|----|----|----|----|----|----|----|----|-------|----|
| 99.DP.0940 | 30 | ER-20 - Ø1+13 | NO | 45 | 64 | 52 | 37 | 70 | 37 | 64 | 54 | 15 | 6.000 | 3 |
| 99.DP.0941 | 30 | ER-20 - Ø1+13 | NO | 45 | 97 | 52 | 37 | 70 | 37 | 64 | 54 | 15 | 6.000 | 3 |
| 99.DP.0942 | 40 | ER-25 - Ø1+16 | NO | 53 | 81 | 63 | 42 | 87 | 47 | 88 | 71 | 25 | 5.000 | 4 |

4



| | | | | | | | | | |
|--|--|--|---|--|--------------------------------------|--|---------------------|--|--|
| | TIPO - TYPE Arretrato Rear Offset | | USCITA - OUTPUT Porta Pinza Collet Chuck | | REFRIGERANTE COOLANT 25BAR | | RATIO 1:1 | | ROTAZIONE - ROTATION Ugualo al mandrino Same as machine spindle |
|--|--|--|---|--|--------------------------------------|--|---------------------|--|--|

| Code | VDI | Output | Int Cool. | H | l2 | l3 | b1 | h1 | h2 | h3 | h4 | Nm | Rpm | kw |
|------------|-----|---------------|-----------|-----|----|----|----|----|-------|------|------|-----|-------|----|
| 99.DP.0935 | 30 | ER-25 - Ø1+16 | ✓ | 85 | 45 | 31 | 64 | 24 | 105,5 | 45,5 | 52 | 32 | 5.000 | 8 |
| 99.DP.0936 | 40 | ER-32 - Ø2+20 | ✓ | 100 | 53 | 35 | 76 | 30 | 124 | 40 | 72,5 | 63 | 4.000 | 10 |
| 99.DP.0937 | 50 | ER-40 - Ø3+30 | ✓ | 110 | 70 | 44 | 88 | 44 | 136 | 46 | 79 | 100 | 4.000 | 12 |



| | | | | | | | | | |
|--|--|--|---|--|--------------------------------------|--|---------------------|--|---|
| | TIPO - TYPE Orientabile Adjustable ±90° | | USCITA - OUTPUT Porta Pinza Collet Chuck | | REFRIGERANTE COOLANT 25BAR | | RATIO 1:1 | | ROTAZIONE - ROTATION Opposto al mandrino Opposite to machine spindle |
|--|--|--|---|--|--------------------------------------|--|---------------------|--|---|

| Code | VDI | Output | Int Cool. | l1 | H | l3 | l4 | b1 | b2 | h1 | h2 | Nm | Rpm | kw |
|------------|-----|---------------|-----------|----|----|----|----|----|----|----|----|----|-------|----|
| 99.DP.0943 | 30 | ER-20 - Ø1+13 | ✓ | 45 | 64 | 52 | 37 | 70 | 37 | 64 | 54 | 15 | 6.000 | 3 |
| 99.DP.0944 | 30 | ER-20 - Ø1+13 | ✓ | 45 | 97 | 52 | 37 | 70 | 37 | 64 | 54 | 15 | 6.000 | 3 |
| 99.DP.0945 | 40 | ER-25 - Ø1+16 | ✓ | 53 | 81 | 63 | 42 | 87 | 47 | 88 | 71 | 25 | 5.000 | 4 |

PIÙ SEMPLICE / PIÙ INFO / PIÙ PRODOTTI - EASIER / MORE INFO / MORE PRODUCTS

TROVA IL TUO PRODOTTO IN POCHI CLICK - FIND YOUR PRODUCT IN FEW CLICKS



by category



by code



by description



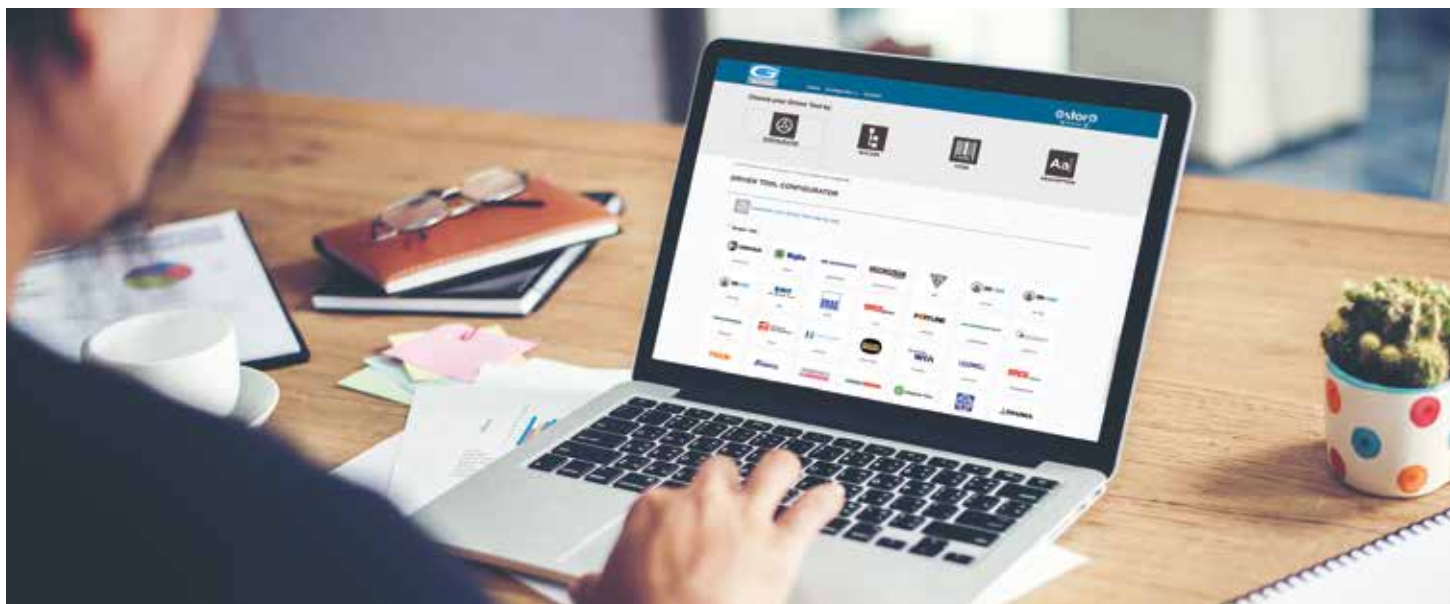
by configurator

Un nuovo modo facile e veloce per ordinare la tua attrezzatura Gerardi

Il nuovo Gerardi estore offre la possibilità di visualizzare e ordinare qualsiasi articolo Gerardi appartenente alle categorie Workholding o Tooling presente sui nostri listini in modo semplice, veloce e completo. Da ora puoi ordinare la morsa, la testa angolare o il motorizzato che ti interessa direttamente on-line dal nostro estore senza costi aggiuntivi.

A new quick and easy way to order your equipment branded Gerardi.

The new Gerardi estore offers the ability to view and order any item available on our Workholding and Tooling catalogues with the easiest, fastest and comprehensive way. You can now order the vise, angle head or driven tool of your interest directly online from our store without any additional cost.



WINDOWS / IOS



ANDROID / IPHONE

