

COMPATIBILI CON TUTTE LE USCITE ER / COMPATIBLE WITH ALL ER OUTPUTS

TEMPI di INSTALLAZIONE RIDOTTI
e **POSSIBILITÀ DI PRESETTING**
a **BORDO MACCHINA**

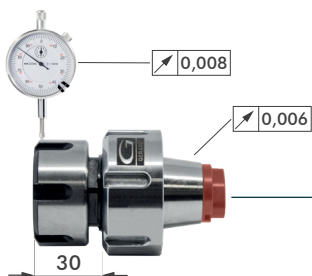
REDUCED SET-UP TIME
and **POSSIBILITY OF**
OFFLINE TOOL PRESETTING!

FORTE SERRAGGIO
HIGH TORQUE

ER OUTPUTS
COMPATIBLE

2 YEARS
GUARANTEED

100% MADE
IN ITALY



PATENT PENDING

LOSANGA DI TRASCINAMENTO RIMOVIBILE
REMOVABLE DIAMOND PLATE

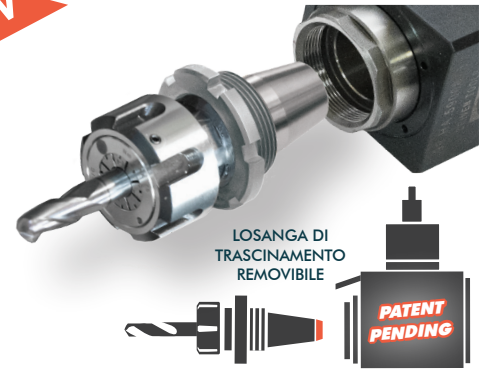
- Nuovi cambi rapidi modulari 2.0 a FORTE SERRAGGIO, 100% Made in Italy.
- Sistema di portautensili modulari adatti al montaggio su qualsiasi tipologia di uscita ER.
- Prestazioni garantite e maggior rigidità sui motorizzati Gerardi grazie alla losanga di trascinamento (rimovibile) e alla ghiera con cuscinetto a sfera.
- Adattabili a motorizzati con uscita refrigerante sia interna che esterna.

- Universal HIGH TORQUE modular quick change adaptor 100% Made in Italy.
- Modular toolholder system suitable for every Driven Tool ER collet output.
- Guaranteed higher rigidity and performances on Gerardi driven tools thanks to the removable diamond plate and the ball bearing nut
- All modular quick change 2.0 adaptors are suitable for ER toolholder with external and internal coolant supply

PER GHIERE INTERNE CON FILETTO ESTERNO FOR INTERNAL NUTS WITH EXTERNAL THREAD

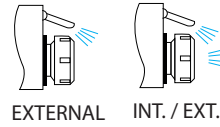
Passaggio refrigerante INTERNO sempre disponibile, specificare SOLO per PORTAFRESA
INTERNAL coolant always available, to be specified for SHELL MILL CUTTER

New



Art.182

ART. 182A Portapinzina - Collet chuck			
Entrata Input	L (mm)	Uscita Output	Codice Code
ER25	29	ER16	9.HT.ER25I.16E
ER25	31	ER20	9.HT.ER25I.20E
ER25	31	ER25	9.HT.ER25I.25E
ER32	29	ER20	9.HT.ER32I.20E
ER32	31	ER25	9.HT.ER32I.25E
ER32	35	ER32	9.HT.ER32I.32E
ER40	31	ER25	9.HT.ER40I.25E
ER40	35	ER32	9.HT.ER40I.32E
ER40	40	ER40	9.HT.ER40I.40E



Per motorizzati di ultima generazione

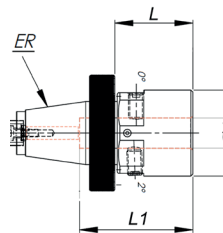
ART. 182E Portapinzina - Collet chuck			
Entrata Input	L (mm)	Uscita Output	Codice Code
ER25	30	ER 11	9.HT.ER25I.11EL
ER25	40	ER 16	9.HT.ER25I.16EL
ER32	40	ER 11	9.HT.ER32I.11EL
ER32	50	ER 16	9.HT.ER32I.16EL
ER32	50	ER 20	9.HT.ER32I.20EL
ER40	50	ER 16	9.HT.ER40I.16EL
ER40	50	ER 20	9.HT.ER40I.20EL
ER40	50	ER 25	9.HT.ER40I.25EL

ART. 182D Portapinzina - Collet chuck			
Entrata Input	L (mm)	Uscita Output	Codice Code
ER25	9	ER11	9.HT.ER25I.11I
ER25	11	ER16	9.HT.ER25I.16I
ER32	11	ER20	9.HT.ER32I.20I
ER32	11	ER25	9.HT.ER32I.25I
ER40	12	ER25	9.HT.ER40I.25I
ER40	14	ER32	9.HT.ER40I.32I

ART. 182C Porta Weldon - Clamping chuck for round shaft (Weldon)

Entrata Input	L (mm)	L1 (mm)	Ø		Codice Code
			Ø1	Ø	
ER25	28	36	6	19	9.HT.ER25I.W06
ER25	28	36	8	21	9.HT.ER25I.W08
ER25	29	40	10	28	9.HT.ER25I.W10
ER25	31	45	12	34	9.HT.ER25I.W12
ER25	31	45	14	36	9.HT.ER25I.W14
ER32	28	36	6	19	9.HT.ER32I.W06
ER32	28	36	8	21	9.HT.ER32I.W08
ER32	29	40	10	28	9.HT.ER32I.W10
ER32	31	45	12	34	9.HT.ER32I.W12
ER32	31	45	14	36	9.HT.ER32I.W14
ER32	34	49	16	38	9.HT.ER32I.W16
ER32	34	49	18	40	9.HT.ER32I.W018
ER32	36	51	20	45	9.HT.ER32I.W20
ER40	28	36	6	19	9.HT.ER40I.W06
ER40	28	36	8	21	9.HT.ER40I.W08
ER40	29	40	10	28	9.HT.ER40I.W10
ER40	31	45	12	34	9.HT.ER40I.W12
ER40	31	45	14	36	9.HT.ER40I.W14
ER40	34	49	16	38	9.HT.ER40I.W16
ER40	34	49	18	40	9.HT.ER40I.W18
ER40	36	51	20	45	9.HT.ER40I.W20
ER50*	28	36	6	19	9.HT.ER50I.W06
ER50*	28	36	8	21	9.HT.ER50I.W08
ER50*	29	40	10	28	9.HT.ER50I.W10
ER50*	31	45	12	34	9.HT.ER50I.W12
ER50*	31	45	14	36	9.HT.ER50I.W14
ER50*	34	49	16	38	9.HT.ER50I.W16
ER50*	34	49	18	40	9.HT.ER50I.W18
ER50*	36	51	20	45	9.HT.ER50I.W20
ER50*	36	57	25	51	9.HT.ER50I.W25

ART. 182B Portafresa - Shell end mill cutter*				
Entrata Input	A (mm)	B (mm)	Uscita Output	Codice Code
	ER25	27		
ER25	31	16	Ø22	9.HT.ER25I.P22
ER32	27	17	Ø16	9.HT.ER32I.P16
ER32	31	17	Ø22	9.HT.ER32I.P22
ER40	31	20	Ø22	9.HT.ER40I.P22
ER40	-	-	Ø27	9.HT.ER40I.P27
ER50*	-	-	-	-



* A richiesta - On request

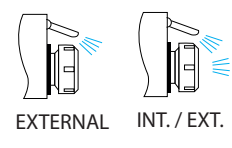
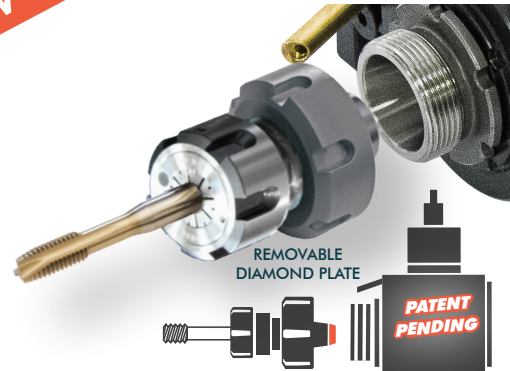
* Specificare per refrigerante INTERNO
For INTERNAL coolant, please specify

PER GHIERE INTERNE CON FILETTO ESTERNO FOR INTERNAL NUTS WITH EXTERNAL THREAD

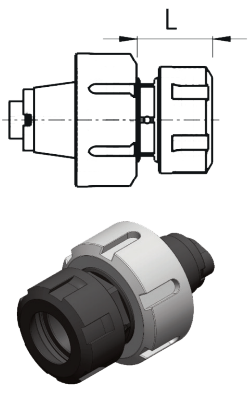
* A richiesta - On request

PER GHIERE ESTERNE CON FILETTO INTERNO FOR EXTERNAL NUTS WITH INTERNAL THREAD

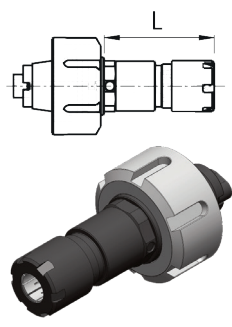
Passaggio refrigerante **INTERNO** sempre disponibile, specificare **SOLO** per PORTAFRESA
INTERNAL coolant always available, to be specified for SHELL MILL CUTTER



Art.183

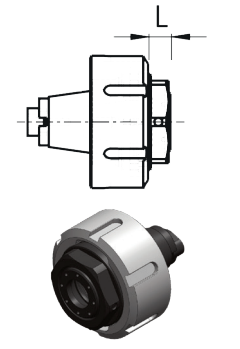


ART. 183A Portapinzina - Collet chuck			
Entrata Input	L (mm)	Uscita Output	Codice Code
ER25	29	ER16	9.HT.ER25E.16E
ER25	31	ER20	9.HT.ER25E.20E
ER25	31	ER25	9.HT.ER25E.25E
ER32	29	ER20	9.HT.ER32E.20E
ER32	31	ER25	9.HT.ER32E.25E
ER32	35	ER32	9.HT.ER32E.32E
ER40	31	ER25	9.HT.ER40E.25E
ER40	35	ER32	9.HT.ER40E.32E
ER40	40	ER40	9.HT.ER40E.40E

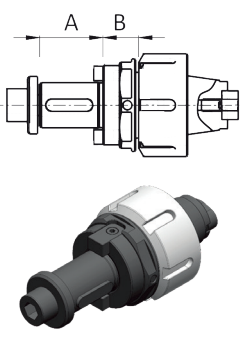


For last generation driven tools

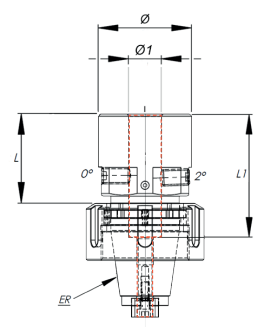
ART. 183E Portapinzina - Collet chuck			
Entrata Input	L (mm)	Uscita Output	Codice Code
ER25	30	ER 11	9.HT.ER25E.11EL
ER25	40	ER 16	9.HT.ER25E.16EL
ER32	40	ER 11	9.HT.ER32E.11EL
ER32	50	ER 16	9.HT.ER32E.16EL
ER32	50	ER 20	9.HT.ER32E.20EL
ER40	50	ER 16	9.HT.ER40E.16EL
ER40	50	ER 20	9.HT.ER40E.20EL
ER40	50	ER 25	9.HT.ER40E.25EL



ART. 183D Portapinzina - Collet chuck			
Entrata Input	L (mm)	Uscita Output	Codice Code
ER25	9	ER11	9.HT.ER25E.11I
ER25	11	ER16	9.HT.ER25E.16I
ER32	11	ER20	9.HT.ER32E.20I
ER32	11	ER25	9.HT.ER32E.25I
ER40	12	ER25	9.HT.ER40E.25I
ER40	14	ER32	9.HT.ER40E.32I



ART. 183B Portafresa - Shell end mill cutter				
Entrata Input	A	B	Uscita Output	Codice Code
	(mm)			
ER25	27	16	Ø16	9.HT.ER25E.P16
ER25	31	16	Ø22	9.HT.ER25E.P22
ER32	27	17	Ø16	9.HT.ER32E.P16
ER32	31	17	Ø22	9.HT.ER32E.P22
ER40	31	20	Ø22	9.HT.ER40E.P22
ER40	-	-	Ø2	9.HT.ER40E.P27
ER50*	-	-	-	-



ART. 183C Porta Weldon - Clamping chuck for round shaft (Weldon)

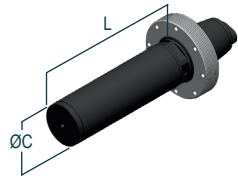
Entrata Input	L (mm)	L1 (mm)	Ø		Codice Code
			Ø1	Ø	
ER25	28	36	6	19	9.HT.ER25E.W06
ER25	28	36	8	21	9.HT.ER25E.W08
ER25	29	40	10	28	9.HT.ER25E.W10
ER25	31	45	12	34	9.HT.ER25E.W12
ER25	31	45	14	36	9.HT.ER25E.W14
ER32	28	36	6	19	9.HT.ER32E.W06
ER32	28	36	8	21	9.HT.ER32E.W08
ER32	29	40	10	28	9.HT.ER32E.W10
ER32	31	45	12	34	9.HT.ER32E.W12
ER32	31	45	14	36	9.HT.ER32E.W14
ER32	34	49	16	38	9.HT.ER32E.W16
ER32	34	49	18	40	9.HT.ER32E.W018
ER32	36	51	20	45	9.HT.ER32E.W20
ER40	28	36	6	19	9.HT.ER40E.W06
ER40	28	36	8	21	9.HT.ER40E.W08
ER40	29	40	10	28	9.HT.ER40E.W10
ER40	31	45	12	34	9.HT.ER40E.W12
ER40	31	45	14	36	9.HT.ER40E.W14
ER40	34	49	16	38	9.HT.ER40E.W16
ER40	34	49	18	40	9.HT.ER40E.W18
ER40	36	51	20	45	9.HT.ER40E.W20
ER50*	28	36	6	19	9.HT.ER50E.W06
ER50*	28	36	8	21	9.HT.ER50E.W08
ER50*	29	40	10	28	9.HT.ER50E.W10
ER50*	31	45	12	34	9.HT.ER50E.W12
ER50*	31	45	14	36	9.HT.ER50E.W14
ER50*	34	49	16	38	9.HT.ER50E.W16
ER50*	34	49	18	40	9.HT.ER50E.W18
ER50*	36	51	20	45	9.HT.ER50E.W20
ER50*	36	57	25	51	9.HT.ER50E.W25

* A richiesta - On request

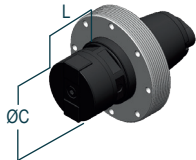


PER GHIERE ESTERNE CON FILETTO INTERNO FOR EXTERNAL NUTS WITH INTERNAL THREAD

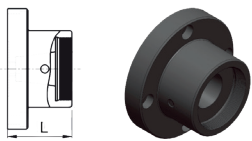
PER GHIERE INTERNE CON FILETTO ESTERNO FOR INTERNAL NUTS WITH EXTERNAL THREAD



ART. 182K - Master per allineamento Master control pin			
Entrata Input	L (mm)	Uscita Output	Codice Code
ER25	95	Ø25	9.HT.ER25I.95MC
ER32	105	Ø30	9.HT.ER32I.105MC
ER40	105	Ø30	9.HT.ER40I.105MC
ER50	105	Ø30	9.HT.ER50I.105MC

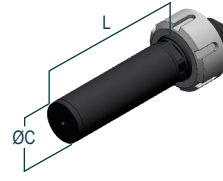


ART. 182M - Master per presettaggio Preset master adapter			
Entrata Input	L (mm)	Uscita Output	Codice Code
ER25	25	Ø25	9.HT.ER25I.25MP
ER32	35	Ø30	9.HT.ER32I.30MP
ER40	45	Ø30	9.HT.ER40I.30MP
ER50	55	Ø30	9.HT.ER50I.30MP



ART. 182Q - Dispositivo per montaggio cambi rapidi da premettere Quick change mounting device			
Entrata Input	L (mm)	Uscita Output	Codice Code
Ø88	-	ER25	9.HT.ER25IP
Ø98	-	ER32	9.HT.ER32IP
Ø108	-	ER40	9.HT.ER40IP
Ø118	-	ER50	9.HT.ER50IP

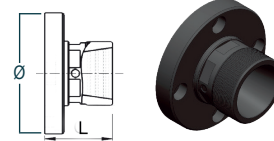
PER GHIERE ESTERNE CON FILETTO INTERNO FOR EXTERNAL NUTS WITH INTERNAL THREAD



ART. 183L - Master per allineamento Master control pin			
Entrata Input	L (mm)	Uscita Output	Codice Code
ER25	95	Ø20	9.HT.ER25.E95MC
ER32	105	Ø30	9.HT.ER32E.105MC
ER40	105	Ø30	9.HT.ER40E.105MC
ER50	105	Ø30	9.HT.ER50E.105MC

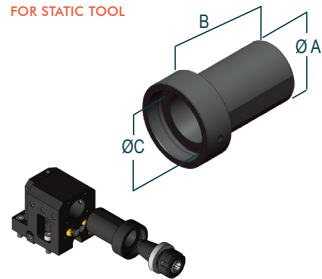


ART. 183N - Master per presettaggio Preset master adapter			
Entrata Input	L (mm)	Uscita Output	Codice Code
ER25	93	Ø25	9.HT.ER25E.25MP
ER32	105	Ø30	9.HT.ER32E.30MP
ER40	105	Ø30	9.HT.ER40E.30MP
ER50	105	Ø30	9.HT.ER50E.30MP

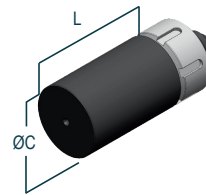


ART. 183P - Dispositivo per montaggio cambi rapidi da premettere Quick change mounting device			
Entrata Input	L (mm)	Uscita Output	Codice Code
Ø65	37	ER25	9.HT.ER25.EP
Ø75	42	ER32	9.HT.ER32.EP
Ø85	47	ER40	9.HT.ER40.EP
Ø98	57	ER50	9.HT.ER50.EP

PER PORTAUTENSILI STATICI FOR STATIC TOOL

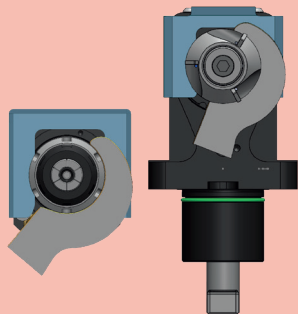


ART. 182S - Bussola a gambo cilindrico con piano di bloccaggio per cambi rapidi Cylindrical shank holder for QCA			
Entrata Input	B (mm)	Uscita Output	Codice Code
Ø25	45	ER25	9.HT.B25.ER25I
Ø30	55	ER25	9.HT.B30.ER25I
Ø32	55	ER25	9.HT.B32.ER25I
Ø40	70	ER 32	9.HT.B40.ER32I
Ø50	80	ER 40	9.HT.B50.ER40I



ART. 183R* - Adattatore lavorabile ER blank			
Entrata Input	L (mm)	Uscita Output	Codice Code
ER25	70	Ø40	9.HT.ER25.E70
ER32	75	Ø48	9.HT.ER32.E75
ER40	90	Ø60	9.HT.ER40.E90
ER50	90	Ø75	9.HT.ER50.E90

* Disponibile anche per ghiera INTERNE con filetto ESTERNO (ART.182T)
Also Available for INTERNAL nuts with EXTERNAL thread (ART.182T)



Facili da rimuovere !
Easy to remove !

Nuovo sistema per il montaggio ed il serraggio dell' UTENSILE/ GHIERA con la chiave ad una mano.

New NUT&TOOLS locking system with one-hand wrench.



Economici
Money saver

I cambi rapidi modulari ti aiutano a ridurre i costi-extra per l'acquisto di nuovi motorizzati o teste angolari.

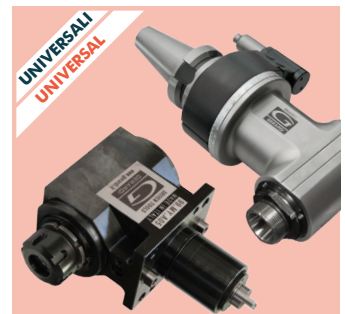
The costs for further requirements of spindle units can be reduced by using the universal quick change adaptors



Maggiore versatilità & prestazione
Versatility & performance improved

Ampia gamma di uscite disponibili. Ghiera cuscinetto e losanga di trascinamento per una maggiore rigidità.

Wide range of outputs available. Ball bearing nut and diamond plate for highest rigidity.



Estrema compatibilità
Extreme compatibility

I cambi rapidi modulari possono essere montati su ogni tipo di Motorizzato o Testa angolare con uscita ER.

The quick change adaptors can be mounted on any type of Driven Tool or right Angle Head with ER output