

# EDECO

Tel 7060 2029  
info@edeco.dk  
www.edeco.dk

ECU-line  
HPH

## Hydraulisk Holder

# HPH

## High Performance Holder

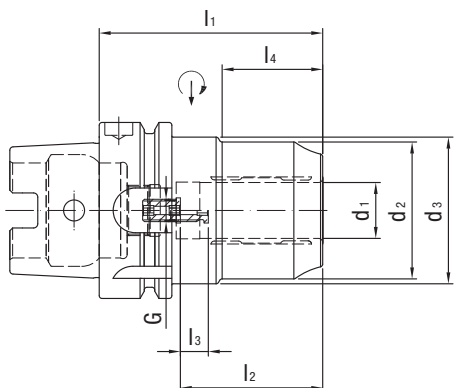


**WTE**  
MAPAL GROUP

## Hydraulisk Holder

# HPH - High Performance Holder DIN 69893-A

Short heavy duty design



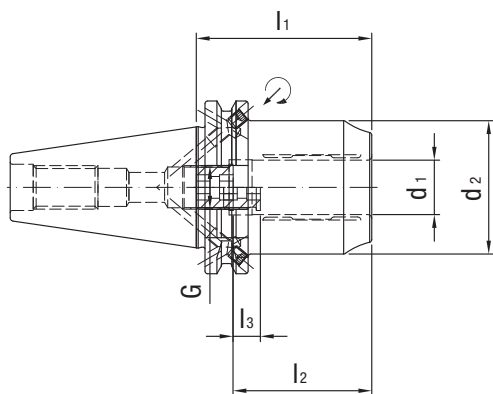
Normal size HSK-A	Dimensions							G	SW	Weight [kg]	Order designation	Art.nr	Pris DKK
	d <sub>1</sub>	d <sub>2</sub>	d <sub>3</sub>	l <sub>1</sub>	l <sub>2</sub>	l <sub>3</sub>	l <sub>4</sub>						
63	12	42	52.5	80	46	10	34	M8x1	3	1.1	16.408.63.12.Z	54.30494132	<b>1520 kr</b>
63	20	49	52.5	80	51	10	36	M8x1	3	1.3	16.408.63.20.Z	54.30372363	
100	12	42	52.5	85	46	10	34	M8x1	3	2.1	16.408.100.12.Z	54.30515435	<b>2000 kr</b>
100	20	49	52.5	85	51	10	36	M8x1	3	2.6	16.408.100.20.Z	54.30436113	
100	32	68	72	100	61	10	42	M8x1	3	3.8	16.408.100.32.Z	54.30471219	

Ø20 mm af alle varianter lagerført i Karlstad (ej HSK100-A)

## Hydraulisk Holder

# HPH - High Performance Holder ISO 7388-1, Form AD/AF

(prev. DIN 69871-AD/B), short heavy duty design



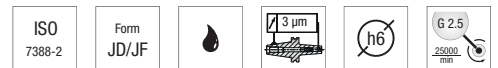
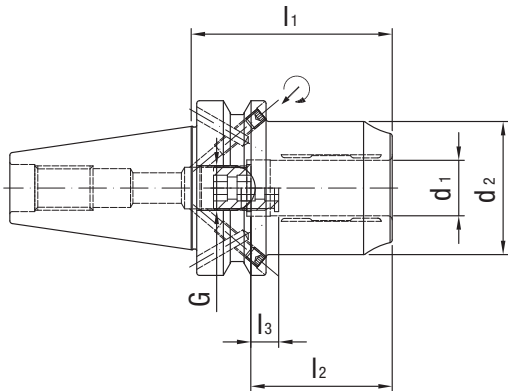
Normal size SK / ISO	Dimensions					G	SW	Weight [kg]	Order designation	Art.nr	Pris DKK
	d <sub>1</sub>	d <sub>2</sub>	l <sub>1</sub>	l <sub>2</sub>	l <sub>3</sub>						
40	12	42	50	46	10	M8x1x13.5	3	1	15.408.40.12.Z	54.30494111	<b>1450 kr</b>
40	20	49	64.5	51	10	M16x1x13.5	8	1.4	15.408.40.20.Z	54.30372360	
50	12	42	50	46	10	M8x1x13.5	3	1	15.408.50.12.Z	54.30515413	<b>1680 kr</b>
50	20	49	64.5	51	10	M16x1x13.5	8	3.1	15.408.50.20.Z	54.30435618	
50	32	72	81	61	10	M16x1x13.5	8	1.4	15.408.50.32.Z	54.30471202	

Ø20 mm af alle varianter lagerført i Karlstad

## Hydraulisk Holder

# HPH - High Performance Holder ISO 7388-2 (JIS B6339)

Short heavy duty design, coolant supply as per ISO 7388-2, Form JD/JF



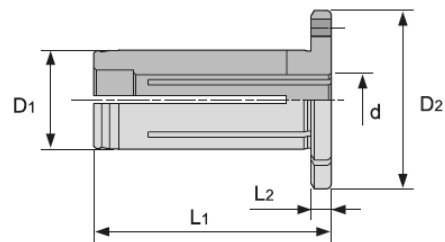
Normal size BT	Dimensions					G	SW	Weight [kg]	Order designation	Art.nr	Pris DKK
	d <sub>1</sub>	d <sub>2</sub>	l <sub>1</sub>	l <sub>2</sub>	l <sub>3</sub>						
40	12	42	58	46	10	M8x1x13.5	3	1	22.408.40.12.Z	54.30494128	<b>1450 kr</b>
40	20	49	72.5	51	10	M16x1x13.5	8	1.4	22.408.40.20.Z	54.30372364	
50	12	42	69	46	10	M8x1x13.5	3	3.4	22.408.50.12.Z	54.30515438	<b>1680 kr</b>
50	20	49	83.5	51	10	M16x1x13.5	8	4	22.408.50.20.Z	54.30435871	
50	32	72	90	61	10	M16x1x13.5	8	4.6	22.408.50.32.Z	54.30471206	

Ø20 mm af alle varianter lagerført i Karlstad

## Reduktionsbøsning

# EHGC-OH metal sealing, inner coolant

Art.nr	Hylsa	d	Pris
5488.2540	EHG20-04-OH	4	<b>530 kr</b>
5488.2550	EHG20-06-OH	6	<b>530 kr</b>
5488.2560	EHG20-08-OH	8	<b>530 kr</b>
5488.2570	EHG20-10-OH	10	<b>530 kr</b>
5488.2580	EHG20-12-OH	12	<b>530 kr</b>
5488.2590	EHG20-16-OH	16	<b>530 kr</b>



EHG	Dimensions				d
	D <sub>1</sub>	D <sub>2</sub>	L <sub>1</sub>	L <sub>2</sub>	
-20-d-OH	20	36	48	4	4, 6, 8, 10, 12, 16

## General technical data:

- Material 1600 N/mm<sup>2</sup>.
- Hardness 52+2 HRC
- Tool holders balanced as standard.
- Operating temperature: 20 to 80 °C.
- Coolant pressure maximum 80 bar.
- Adjustment path 10 mm, from both sides.
- Cylindrical shanks, with and without reducing sleeves, with shank tolerance h6 according to DIN 1835 forms A, B, E and according to DIN 6535 forms HA, HB and HE can be clamped.
- Indicative values for operating speed limits for HPH clamping chucks with HSK connection

Nominal size HSK	Max. operating speed [rpm]
63	24,000
100	16,000

### Clamping power and insertion length

Clamping diameter [mm]	Minimum clamping depth [mm]	Permissible transferrable torque for shank h6 minimum size [Nm]
12	36	150
20	41	550
32	51	900



Set a torque wrench to a tightening torque of 7 Nm.

Tighten the clamping screw to the stop with the aid of the torque wrench.

