



Maschinenspezifische Spannlösungen
Machine specific workholding solutions



TRIAG
INTERNATIONAL



YASDA
PX30i

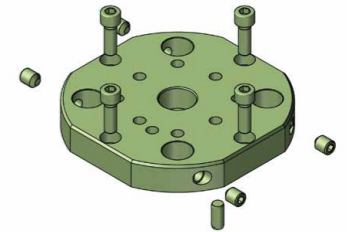
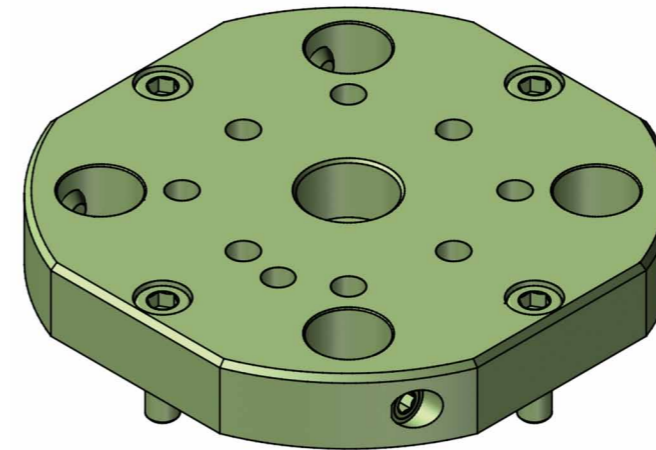
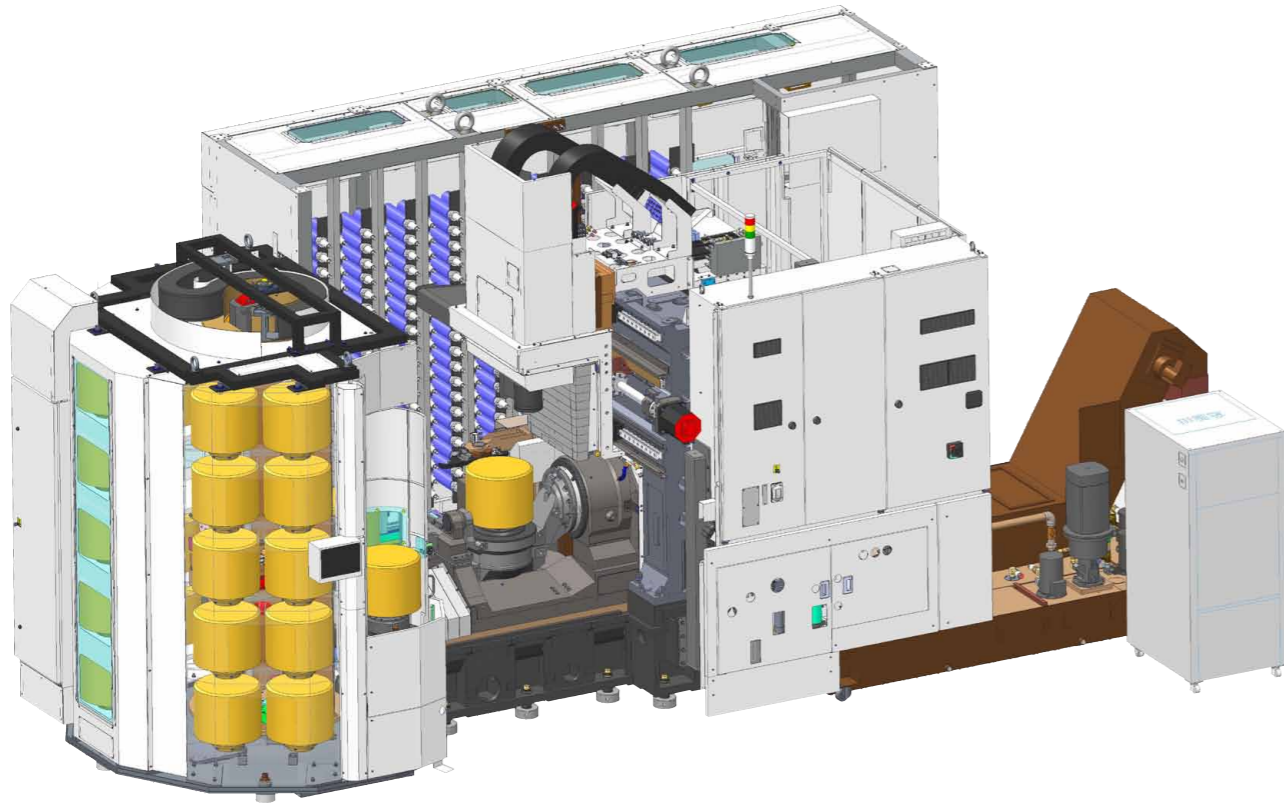




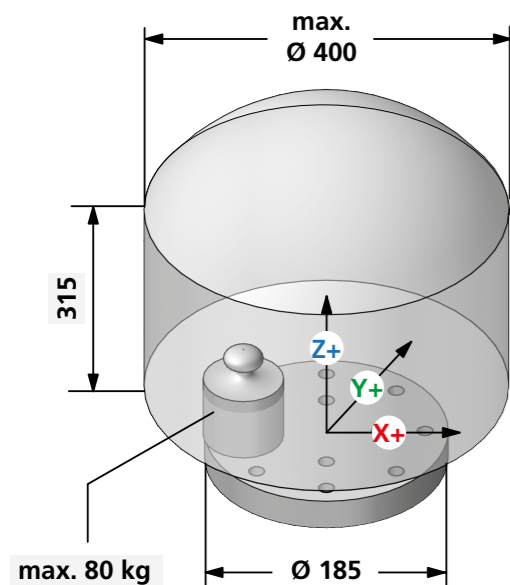
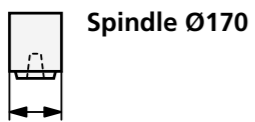
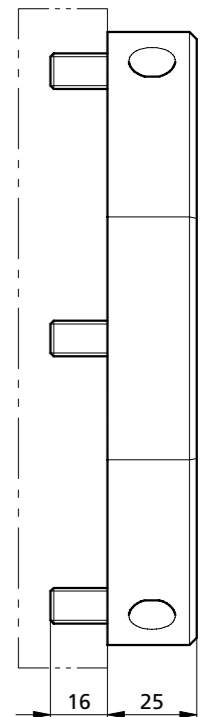
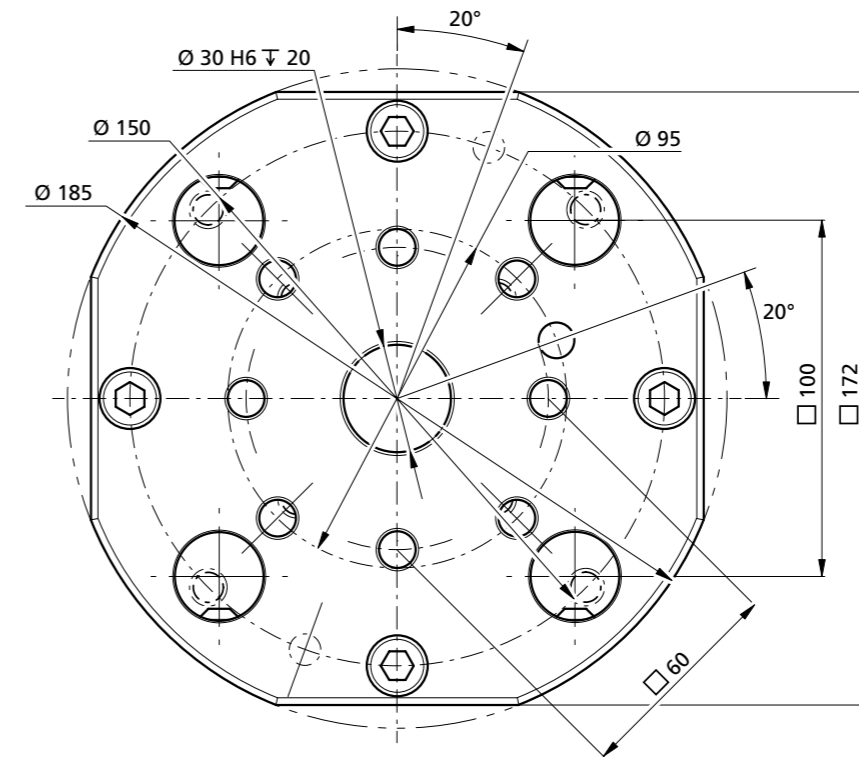
33 Paletten
33 pallets

323 Werkzeughalter-Plätze
323 Tool holder slots

Photo(s): YASDA PRECISION TOOLS K.K.



YAPX30I-AF1



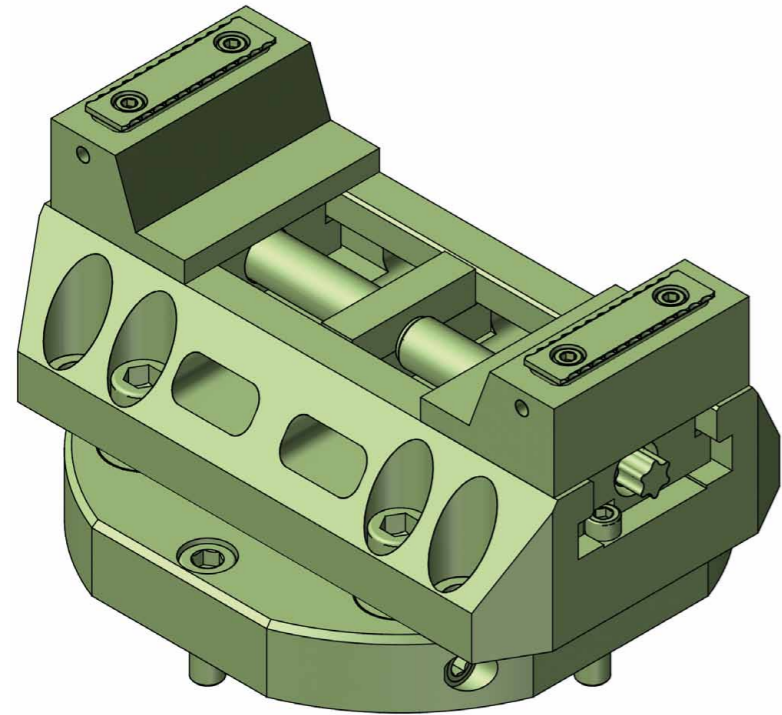
X = 680 (X-340 X+340)
Y = 400 (Y-200 Y+200)
Z = 500

Artikel Nr. und Inhalt Article Nr. and content	Bezeichnung Description	~ Kg
YAPX30I-AF1	Adapterflansch / Adapter flange	4,4



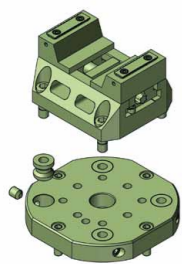
triCENTRO

Zentrischspanner «ZSX» schmal inkl. Adapterflansch
Self centering vise «ZSX» slim incl. adapter flange

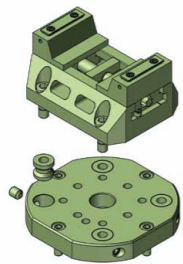


- 2** Backenvarianten verfügbar
Jaw variants available
- 3mm** Direkt-Prägebacken
3mm Direct stamping jaws
- WWM** Spannkrafterhaltung mit Nachfederung
Spring loaded mechanism to maintain clamping force

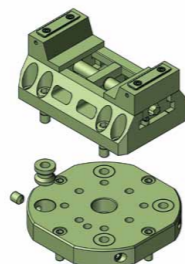
Bestellschlüssel Order code	Bezeichnung Description	~ Kg	Länge L Length L	Spannbereich A Clamping area A	Spannbereich B Clamping area B
YAPX30I-SET1	Maschinenset 1 / Machine set 1	10,8	140	10 - 64	62 - 118
YAPX30I-SET2	Maschinenset 2 / Machine set 2	11,4	160	10 - 84	62 - 138
YAPX30I-SET3	Maschinenset 3 / Machine set 3	11,9	180	10 - 104	62 - 158
YAPX30I-SET4	Maschinenset 4 / Machine set 4	12,5	200	10 - 124	62 - 178



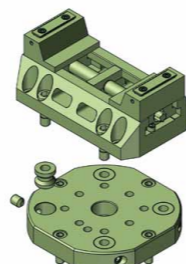
YAPX30I-SET1



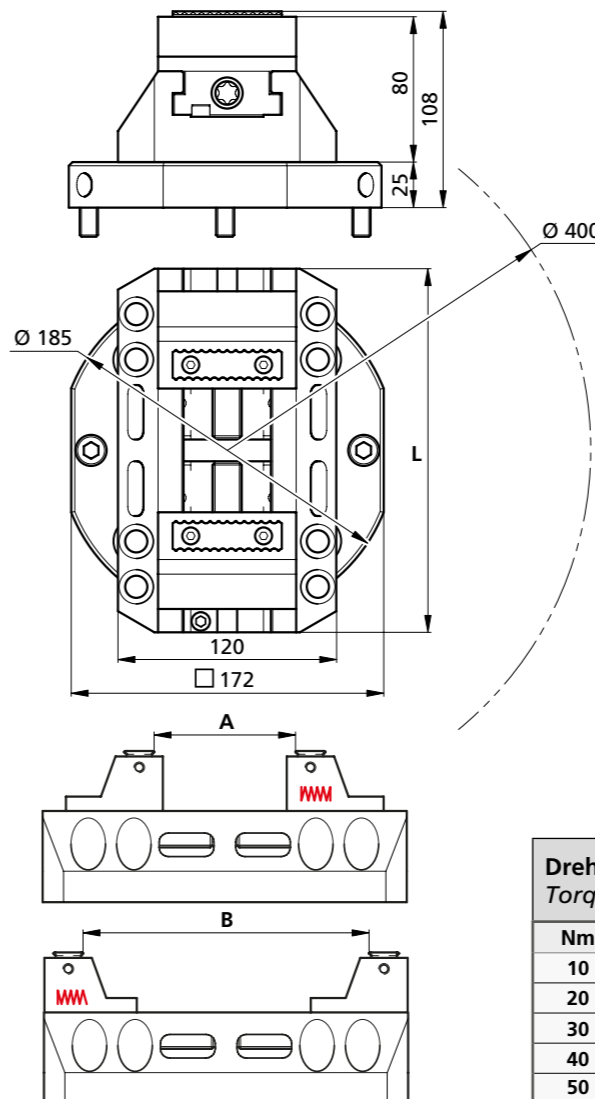
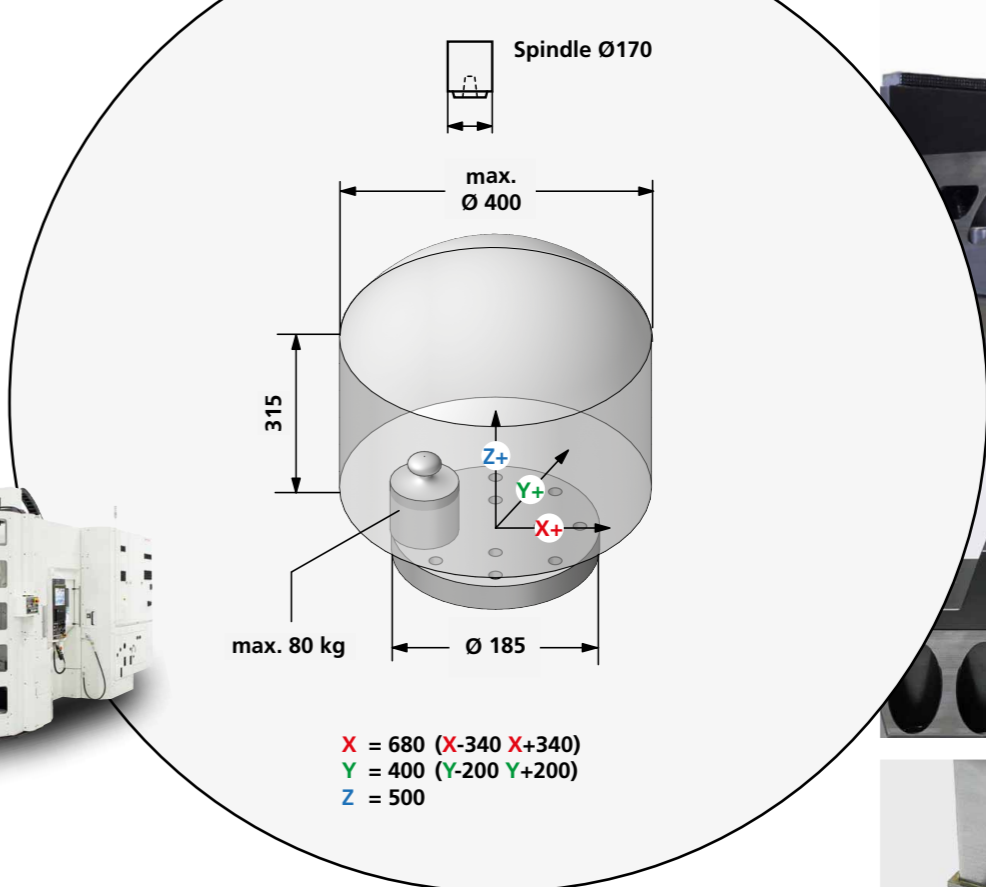
YAPX30I-SET2



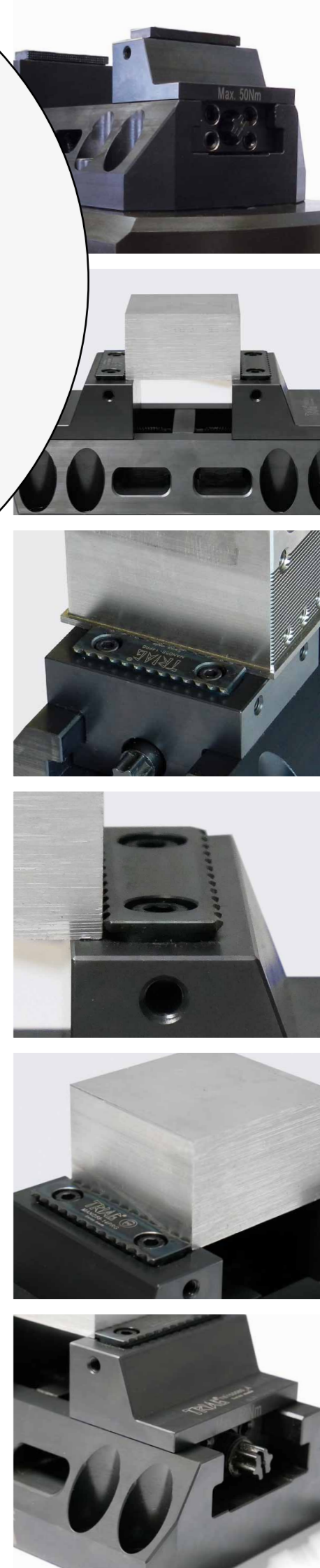
YAPX30I-SET3



YAPX30I-SET4



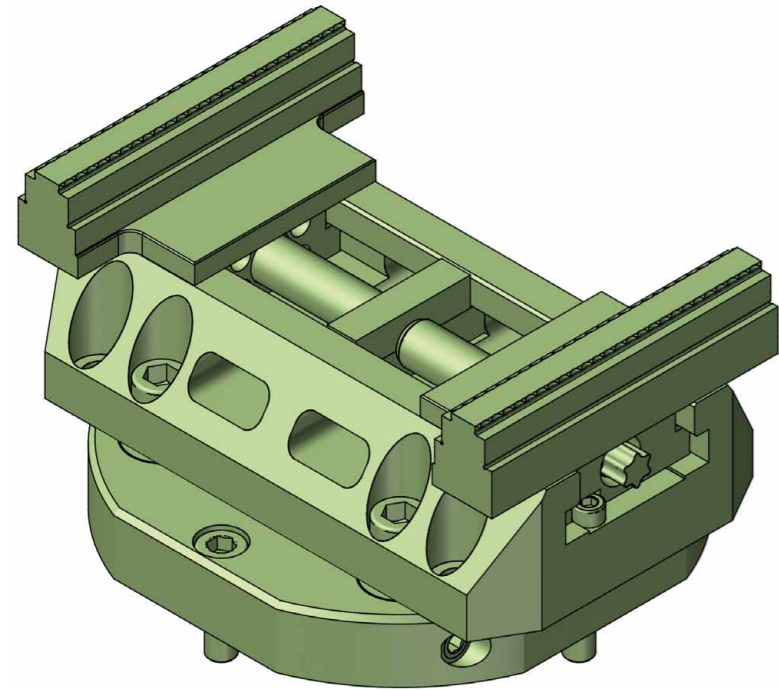
Drehmoment Torque		Spannkraft Workholding force		
Nm	(lb-ft)	~daN	~(lb)	~t
10	7,4	= 200	440	0,2
20	14,8	= 500	1'102	0,5
30	22,2	= 1'000	2'204	1,0
40	29,6	= 1'300	2'866	1,3
50	37,0	= 1'600	3'527	1,6





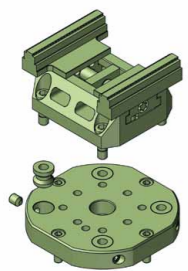
triCENTRO

Zentrischspanner «ZSX» breit inkl. Adapterflansch
Self centering vise «ZSX» wide incl. adapter flange

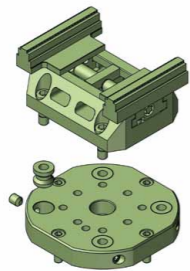


- 2** Backenvarianten verfügbar
Jaw variants available
- 3mm** Direkt-Prägebacken
3mm Direct stamping jaws
- W** Spannkrafterhaltung mit Nachfederung
Spring loaded mechanism to maintain clamping force

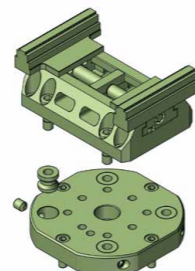
Bestellschlüssel Order code	Bezeichnung Description	~ Kg	Länge L Length L	Spannbereich A Clamping area A	Spannbereich B Clamping area B
YAPX30I-SET5	Maschinenset 5 / Machine set 5	10,9	140	14 - 70	70 - 126
YAPX30I-SET6	Maschinenset 6 / Machine set 6	11,5	160	14 - 90	70 - 146
YAPX30I-SET7	Maschinenset 7 / Machine set 7	12,0	180	14 - 110	70 - 166
YAPX30I-SET8	Maschinenset 8 / Machine set 8	12,6	200	14 - 130	70 - 186



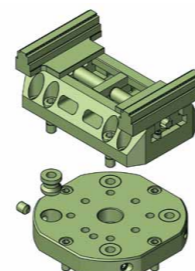
YAPX30I-SET5



YAPX30I-SET6



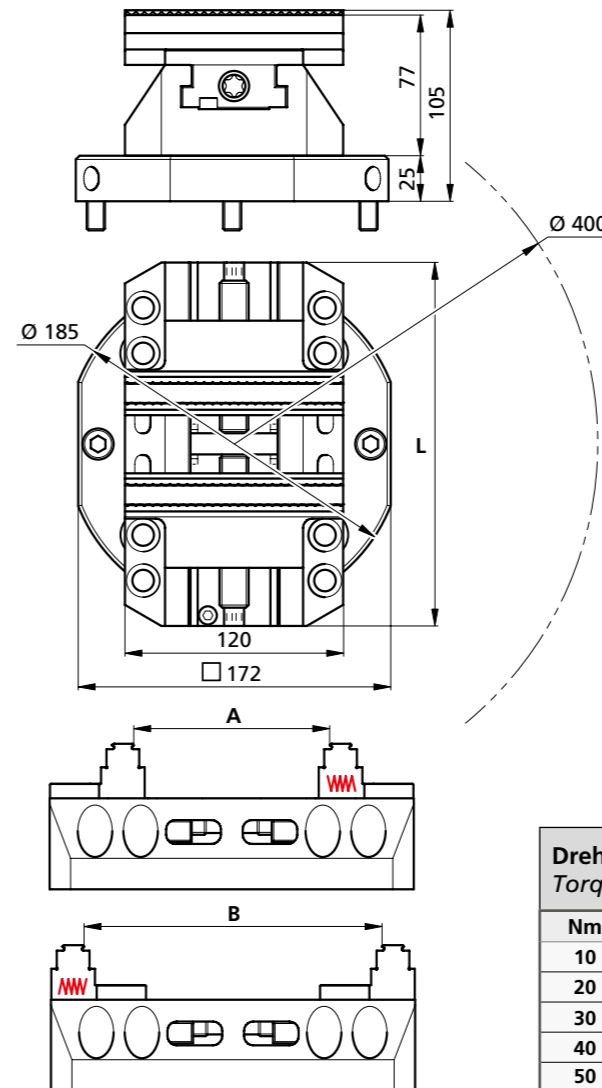
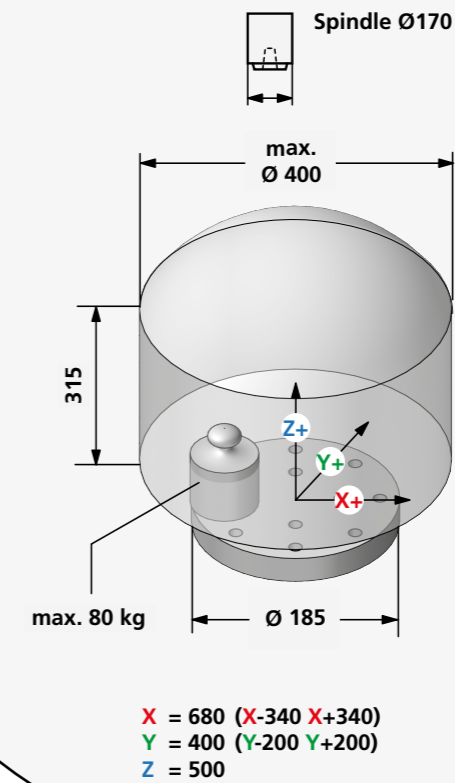
YAPX30I-SET7



YAPX30I-SET8



YASDA
PX30i

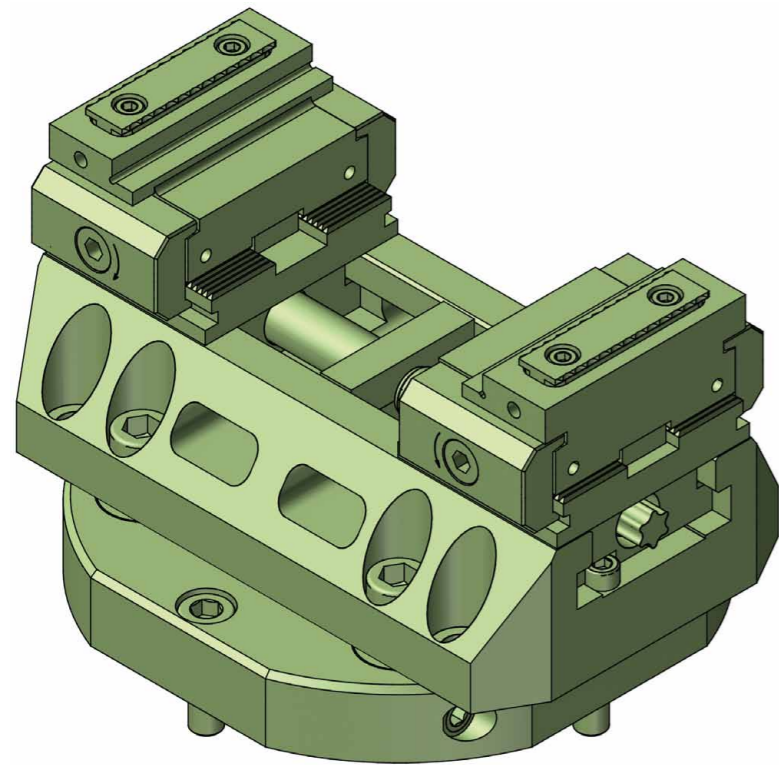


Drehmoment Torque		Spannkraft Workholding force		
Nm	(lb-ft)	~daN	~(lb)	~t
10	7,4	= 200	440	0,2
20	14,8	= 500	1'102	0,5
30	22,2	= 1'000	2'204	1,0
40	29,6	= 1'300	2'866	1,3
50	37,0	= 1'600	3'527	1,6



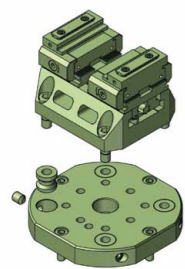
triCENTRO

Modularer Zentrischspanner «ZSM» inkl. Adapterflansch
 Modular self centering vise «ZSM» incl. adapter flange

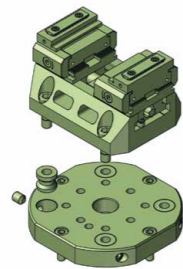


- 56** Verschiedene Anschlagmodule
Different stop modules
- 3mm Direkt-Prägebacken
3mm Direct stamping jaws
- powerCLAMP Schnittstelle
powerCLAMP interface
- powerCLAMP Pratzensystem
powerCLAMP side clamp system
- M** Höchste Modularität
Highest modularity

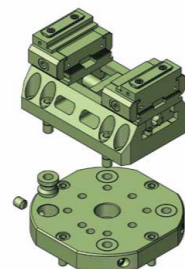
Bestellschlüssel Order code	Bezeichnung Description	~ Kg	Länge L Length L	Spannbereich A Clamping area A	Spannbereich B Clamping area B
YAPX30I-SET9	Maschinenset 9 / Machine set 9	12,6	140	10 - 64	60 - 115
YAPX30I-SET10	Maschinenset 10 / Machine set 10	13,2	160	10 - 84	60 - 135
YAPX30I-SET11	Maschinenset 11 / Machine set 11	13,7	180	10 - 104	60 - 155
YAPX30I-SET12	Maschinenset 12 / Machine set 12	14,3	200	10 - 124	60 - 175



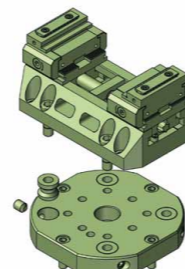
YAPX30I-SET9



YAPX30I-SET10



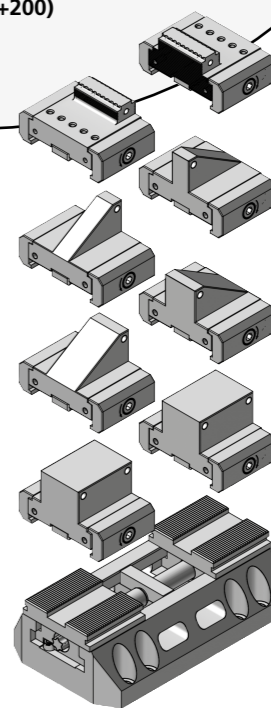
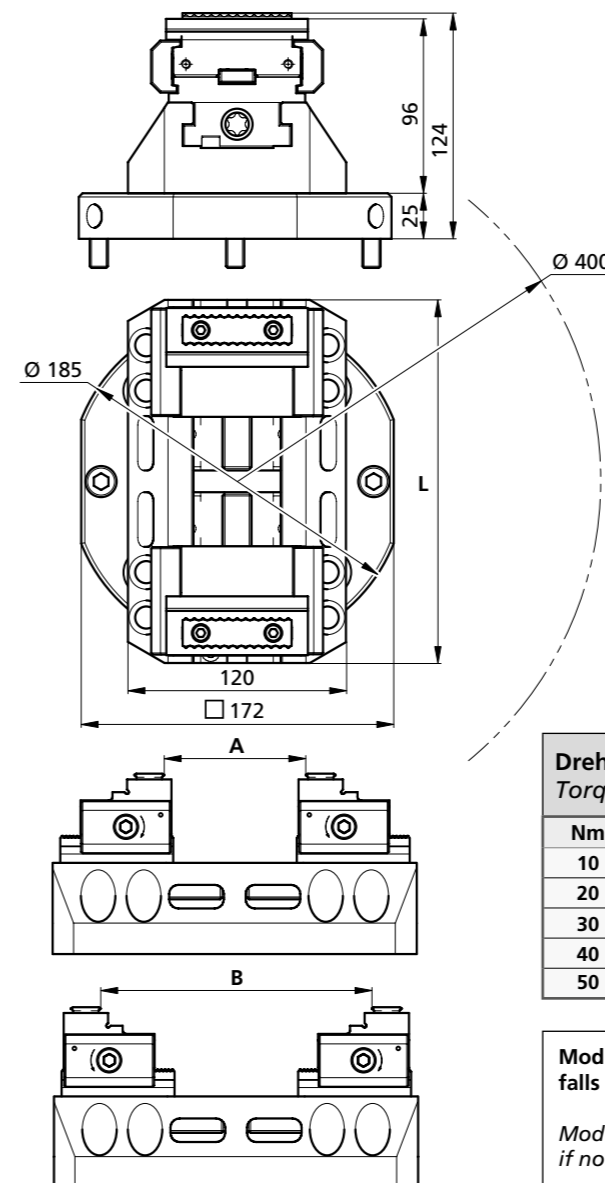
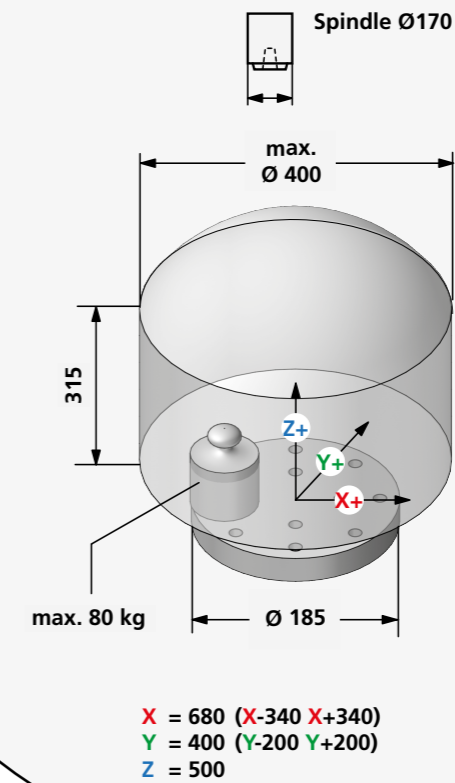
YAPX30I-SET11



YAPX30I-SET12



YASDA
PX30i



Mehr auf Seite 26
More on page 26

Drehmoment Torque	Spannkraft Workholding force				
	Nm	(lb-ft)	~daN	~(lb)	~t
10	7,4	=	200	440	0,2
20	14,8	=	500	1'102	0,5
30	22,2	=	1'000	2'204	1,0
40	29,6	=	1'300	2'866	1,3
50	37,0	=	1'600	3'527	1,6

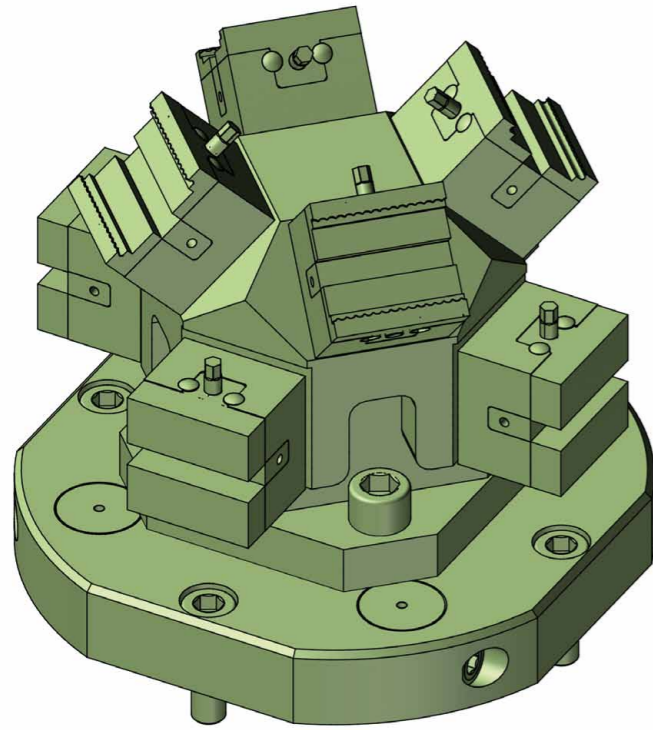
Module gemäss Zusammenstellzeichnung
falls nicht anders vereinbart.

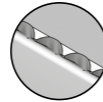

Modules according to assembly drawing
if not agreed otherwise.







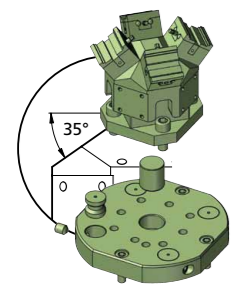
triCENTRO

Mehrfachspannsystem mit Micro-Zentrischspanner inkl. Adapterflansch
 Multiple workholding system with micro self centering vises incl. adapter flange

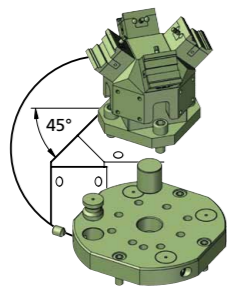


- 7** Backenvarianten
Jaw variants
-  2,2 mm Direkt-Prägebacken
2,2 mm Direct stamping jaws
-  «Sputnik» 5-Achs
Mehrfachspannsystem
«Sputnik» 5-axis multiple
workholding system
-  35°
Verschiedene Bearbeitungswinkel
Different machine angles
-  Beste Zugänglichkeit
Best accessibility

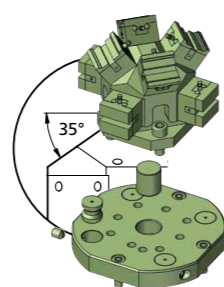
Bestellschlüssel Order code	Bezeichnung Description	~ Kg	Spannstellen Clamping areas	Winkel Angle	Spannbereich Clamping area
 YAPX30I-SET13	Maschinenset 13 / Machine set 13	8,3	4	35°	0 - 31
 YAPX30I-SET14	Maschinenset 14 / Machine set 14	8,4	4	45°	0 - 31
 YAPX30I-SET15	Maschinenset 15 / Machine set 15	9,8	8	35°	0 - 31
 YAPX30I-SET16	Maschinenset 16 / Machine set 16	9,9	8	45°	0 - 31



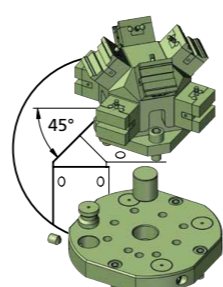
YAPX30I-SET13



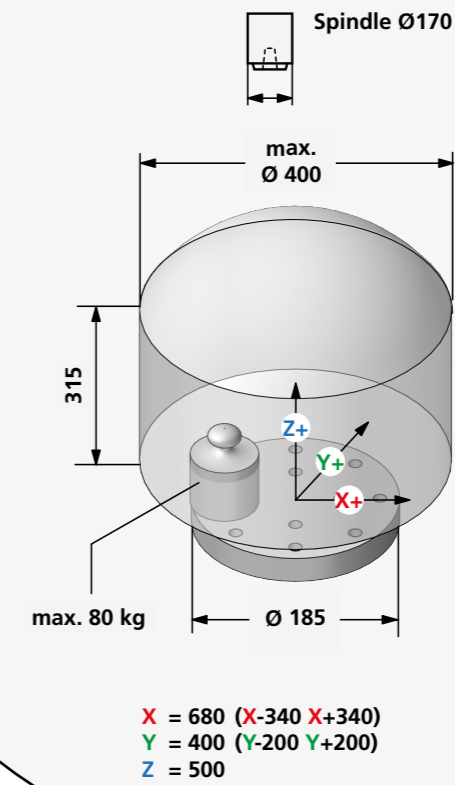
YAPX30I-SET14



YAPX30I-SET15



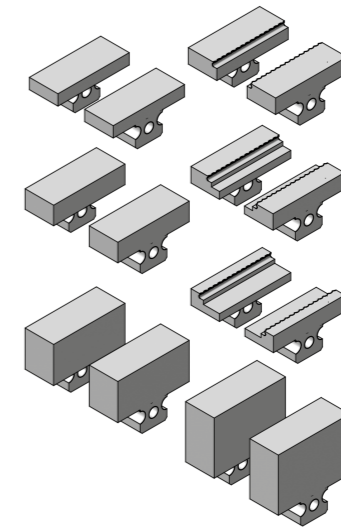
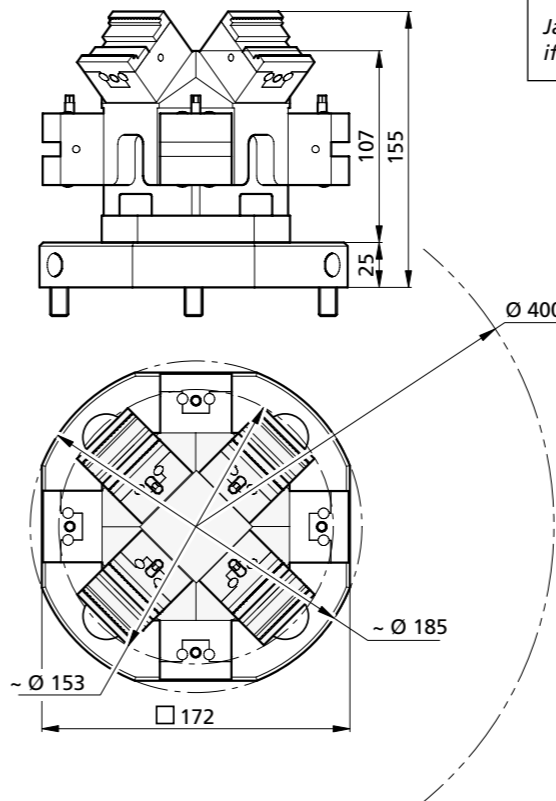
YAPX30I-SET16



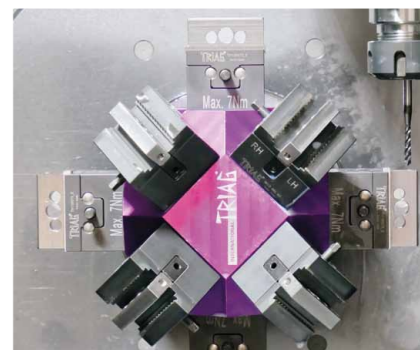
Drehmoment Torque		Spannkraft Workholding force		
Nm	(lb-ft)	~daN	~(lb)	~t
4	3	= 457	1'007	0,46
5	3,7	= 571	1'259	0,57
6	4,4	= 686	1'512	0,69
7	5,2	= 800	1'764	0,8

Backen gemäss Zusammenstellzeichnung
falls nicht anders vereinbart.

Jaws according to assembly drawing
if not agreed otherwise.



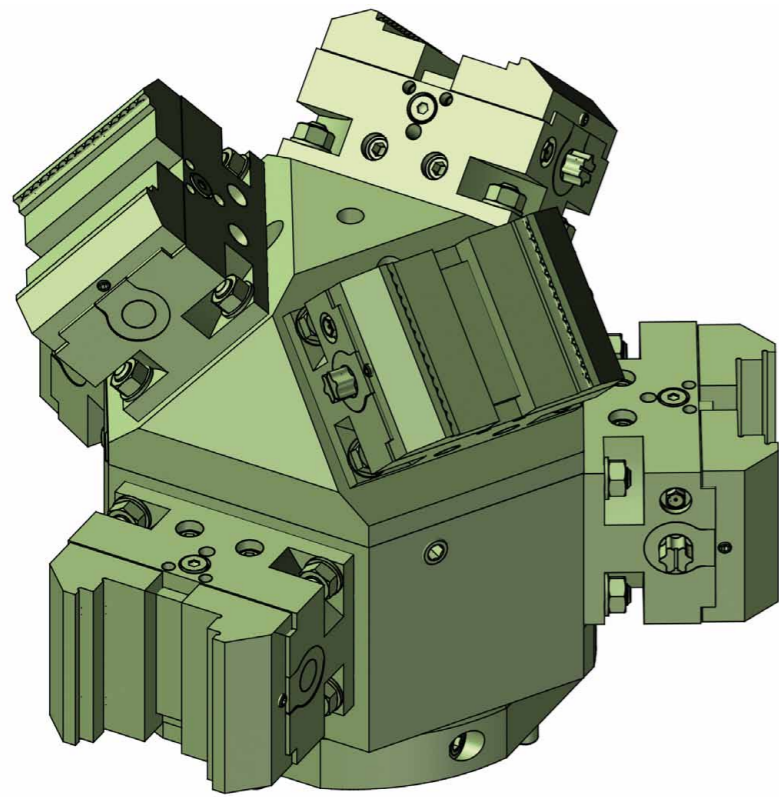
Mehr auf Seite 27
More on page 27





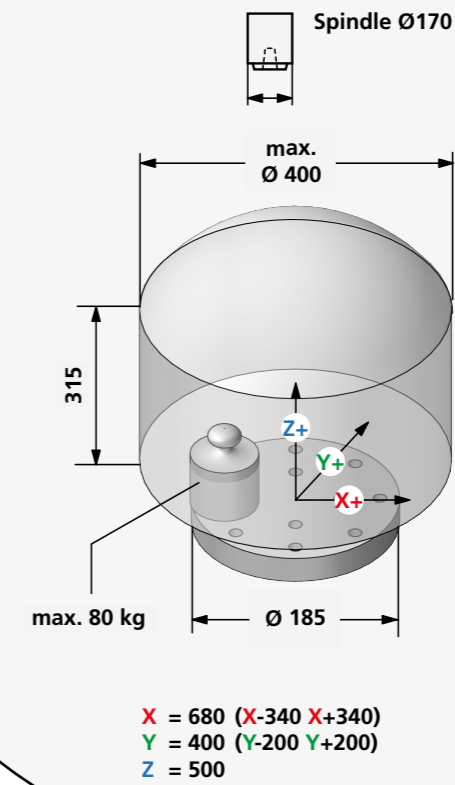
triCENTRO

Mehrfachspannsystem mit Mini-Zentrischspanner inkl. Adapterflansch
 Multiple workholding system with mini self centering vises incl. adapter flange

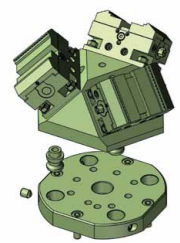


- 14** Backenvarianten
Jaw variants
-  3mm Direkt-Prägebacken
3mm Direct stamping jaws
-  «Sputnik» 5-Achs
Mehrfachspannsystem
«Sputnik» 5-axis multiple
workholding system
-  Beste Zugänglichkeit
Best accessibility

YASDA
PX30i



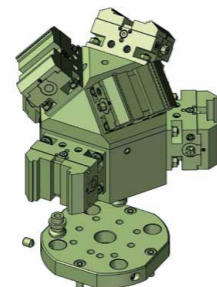
Bestellschlüssel Order code	Bezeichnung Description	~ Kg	Spannstellen Clamping areas	Spannbereich Clamping area
 YAPX30i-SET17	Maschinenset 17 / Machine set 17	22,4	3	0 - 121
 YAPX30i-SET18	Maschinenset 18 / Machine set 18	38,6	3	0 - 121
 YAPX30i-SET19	Maschinenset 19 / Machine set 19	48,5	6	0 - 121



YAPX30i-SET17



YAPX30i-SET18



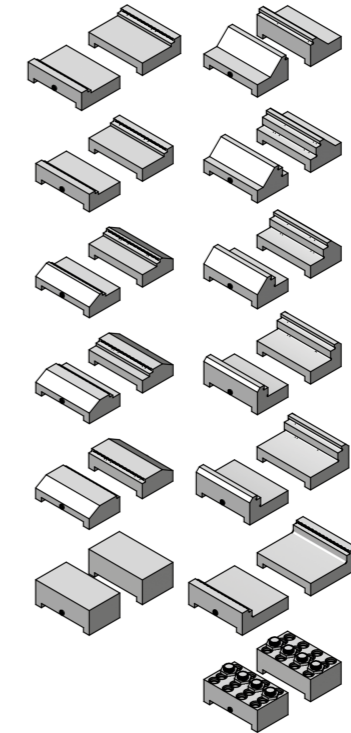
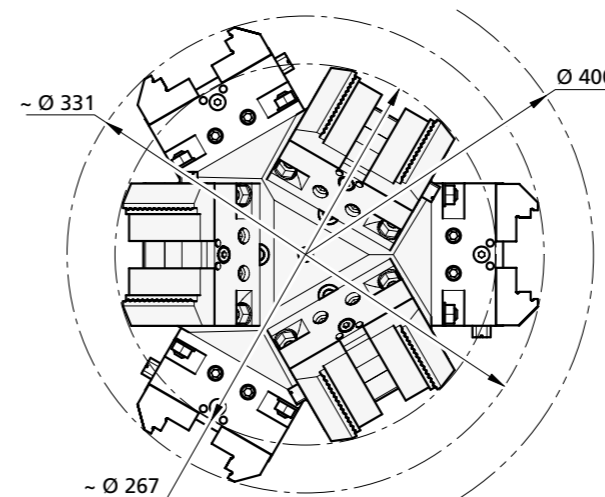
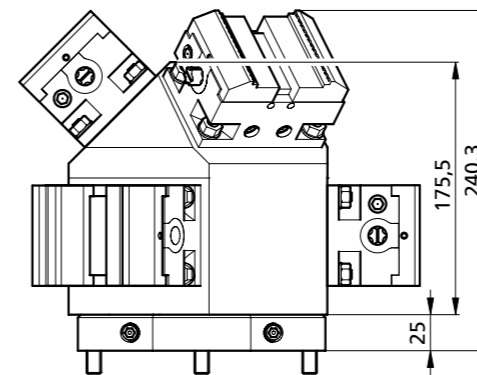
YAPX30i-SET19



Drehmoment Torque		Spannkraft Workholding force		
Nm	(lb-ft)	~daN	~(lb)	~t
10	7,4	= 200	440	0,2
20	14,8	= 500	1'102	0,5
30	22,2	= 1'000	2'204	1,0
40	29,6	= 1'300	2'866	1,3
50	37,0	= 1'600	3'527	1,6

Backen gemäss Zusammenstellzeichnung
falls nicht anders vereinbart.

Jaws according to assembly drawing
if not agreed otherwise.

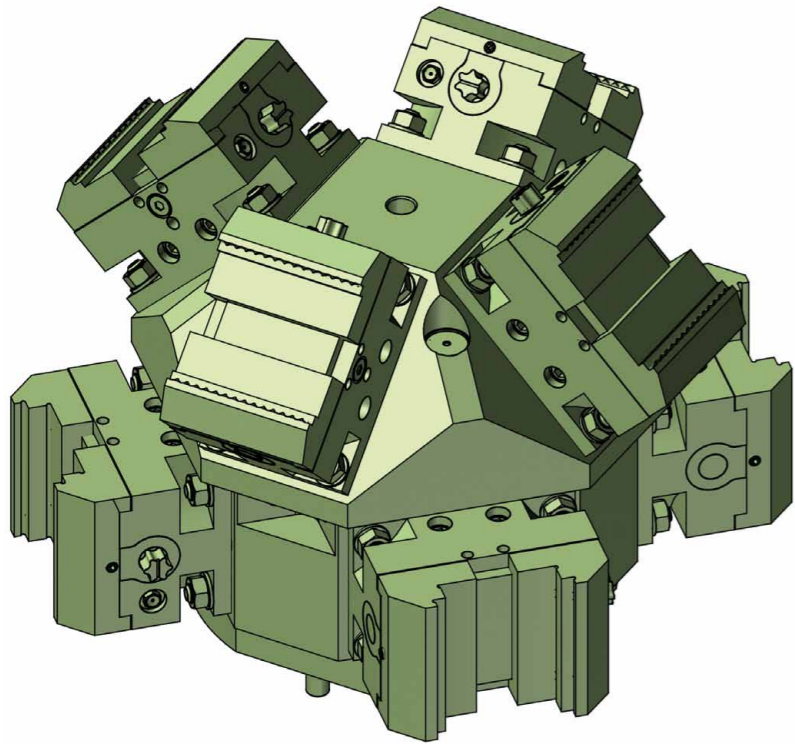


Mehr auf Seite 26
More on page 26



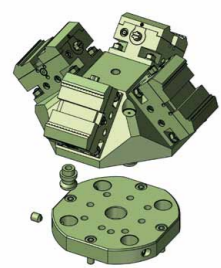
triCENTRO

Mehrfachspannsystem mit Mini-Zentrischspanner inkl. Adapterflansch
 Multiple workholding system with mini self centering vises incl. adapter flange

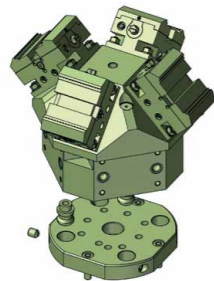


- 14** Backenvarianten
Jaw variants
- 3mm Direkt-Prägebacken
3mm Direct stamping jaws
- «Sputnik» 5-Achs
Mehrfachspannsystem
«Sputnik» 5-axis multiple
workholding system
- Beste Zugänglichkeit
Best accessibility

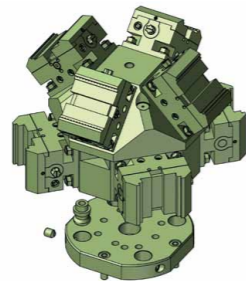
Bestellschlüssel Order code	Bezeichnung Description	~ Kg	Spannstellen Clamping areas	Spannbereich Clamping area
YAPX30I-SET20	Maschinenset 20 / Machine set 20	29,5	4	0 - 121
YAPX30I-SET21	Maschinenset 21 / Machine set 21	44,4	4	0 - 121
YAPX30I-SET22	Maschinenset 22 / Machine set 22	57,4	8	0 - 121



YAPX30I-SET20



YAPX30I-SET21



YAPX30I-SET22

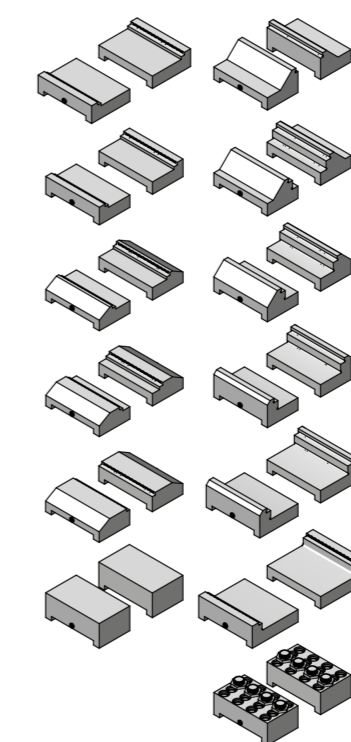
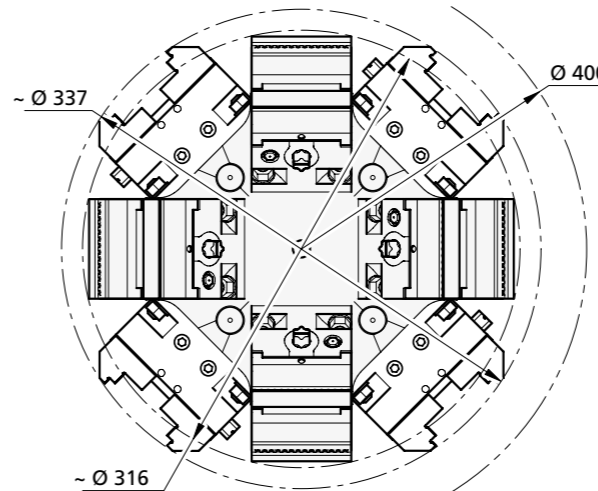
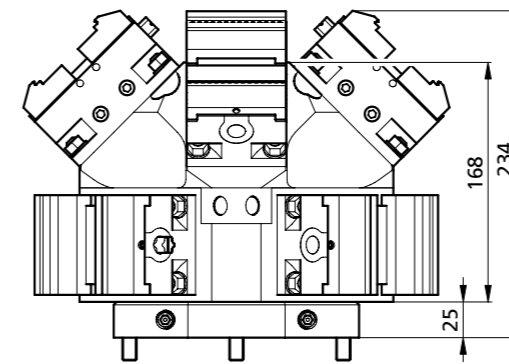
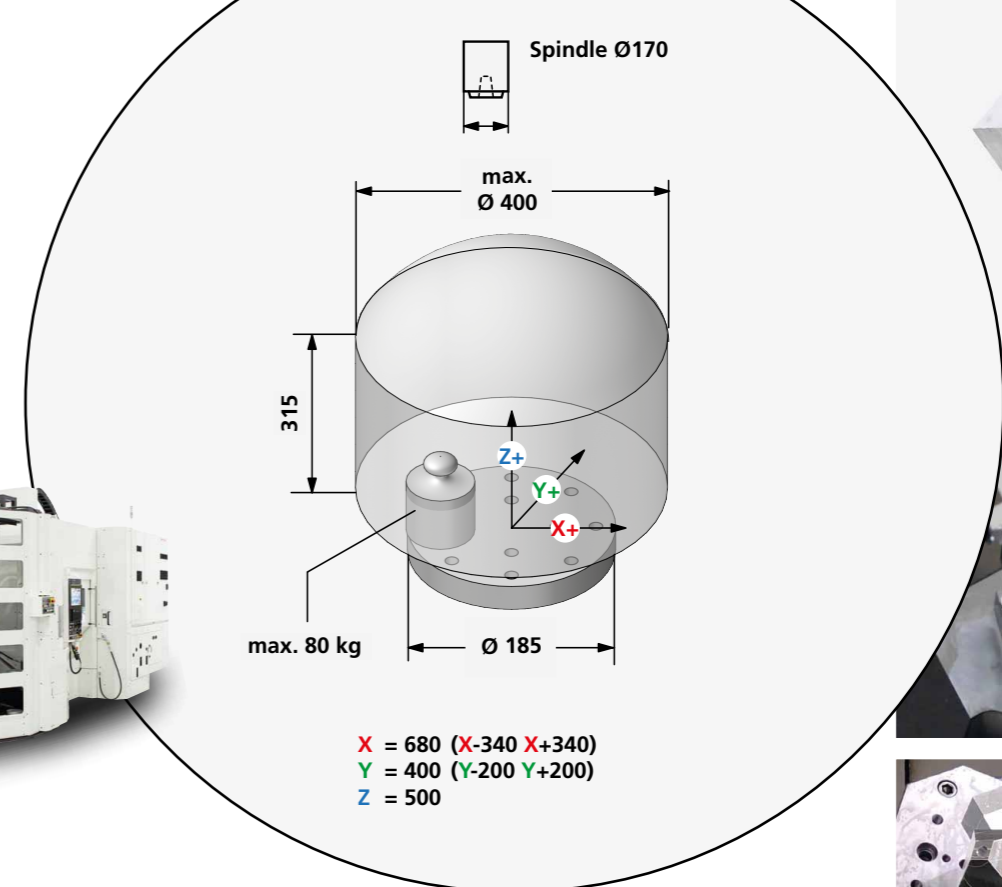


Drehmoment Torque		Spannkraft Workholding force		
Nm	(lb-ft)	~daN	~(lb)	~t
10	7,4	= 200	440	0,2
20	14,8	= 500	1'102	0,5
30	22,2	= 1'000	2'204	1,0
40	29,6	= 1'300	2'866	1,3
50	37,0	= 1'600	3'527	1,6

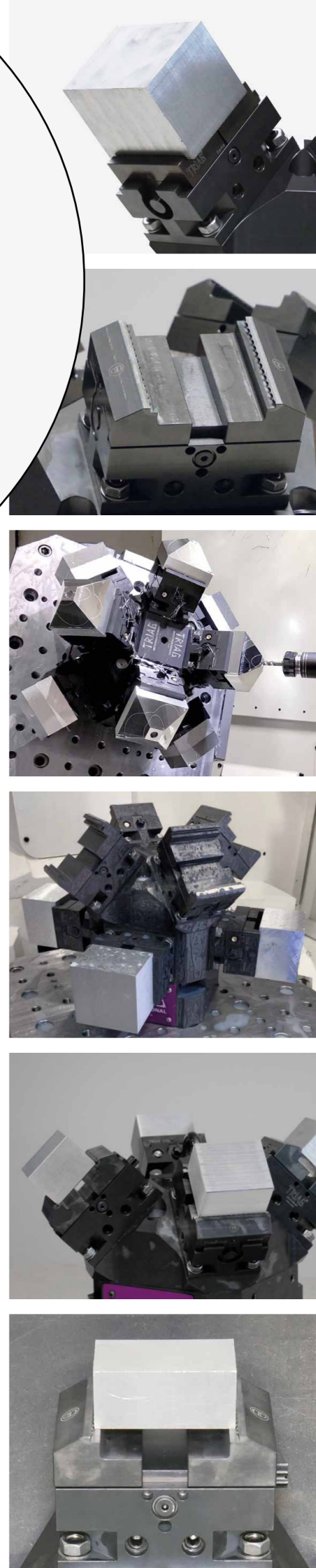
Backen gemäss Zusammenstellzeichnung
falls nicht anders vereinbart.

Jaws according to assembly drawing
if not agreed otherwise.

YASDA
PX30i



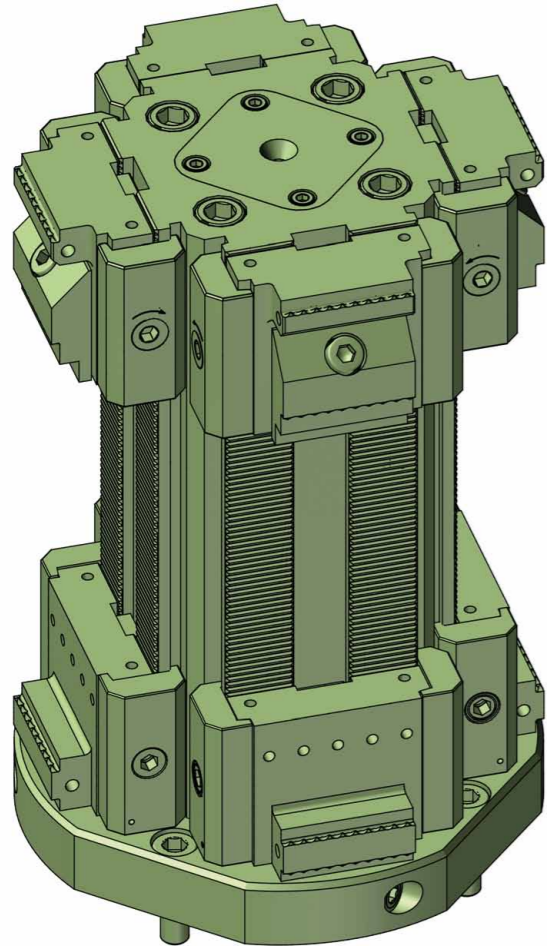
Mehr auf Seite 26
More on page 26





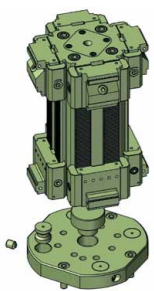
powerCLAMP

PCT Spannturm 4-seitig inkl. Adapterflansch
PCT 4-sided clamping tower incl. adapter flange



- >200** Verschiedene Module
Different Modules
- powerCLAMP Schnittstelle
powerCLAMP interface
- powerCLAMP Pratzensystem
powerCLAMP side clamp system
- M** Höchste Modularität
Highest modularity
- Keine spänefüllenden T-Nuten
No chip catching T-slots
- Positionierschritte von 2 mm
Positioning increments of 2 mm

Bestellschlüssel <i>Order code</i>	Bezeichnung <i>Description</i>	~ Kg	Spannstellen <i>Clamping areas</i>	Spannbereich <i>Clamping area</i>
YAPX30I-SET23	Maschinenset 23 / <i>Machine set 23</i>	31,4	4	max. 182

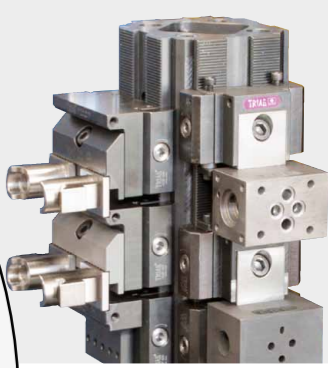
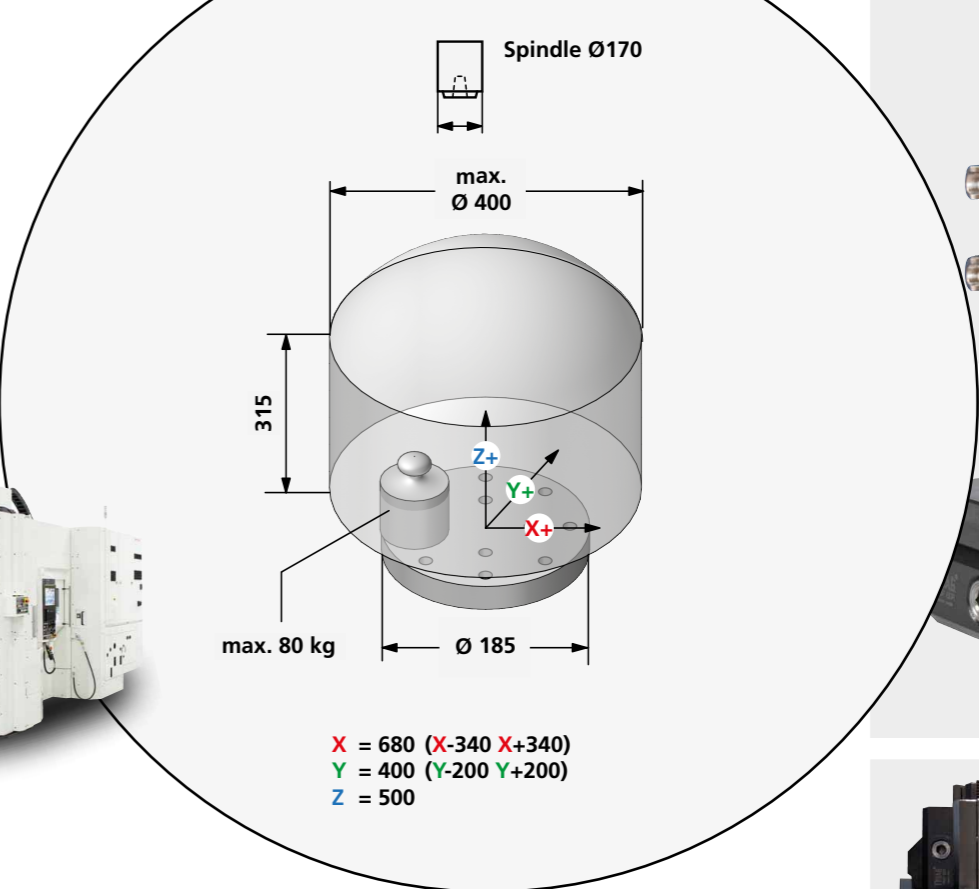


YAPX30I-SET23

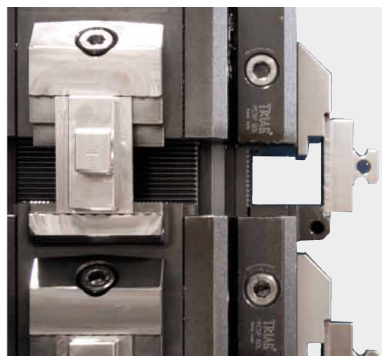
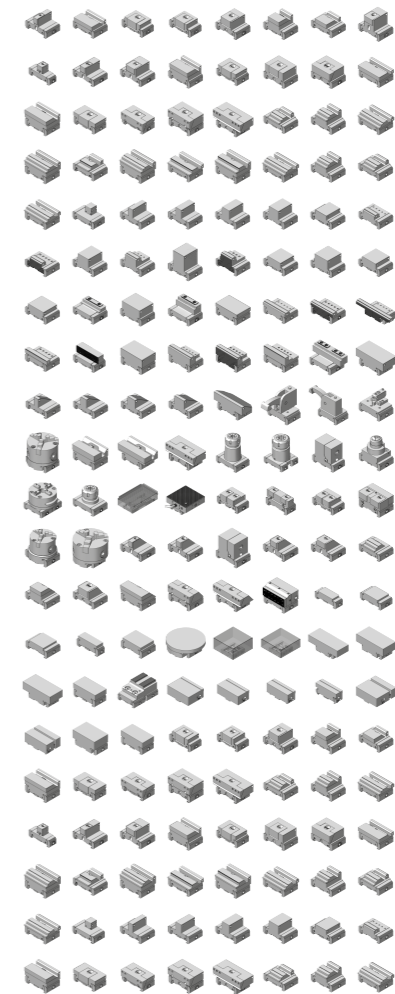
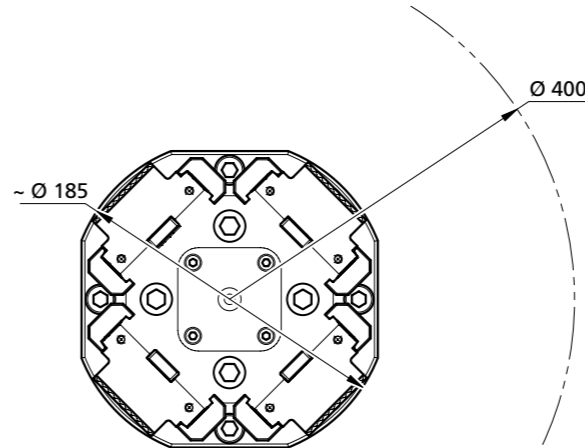
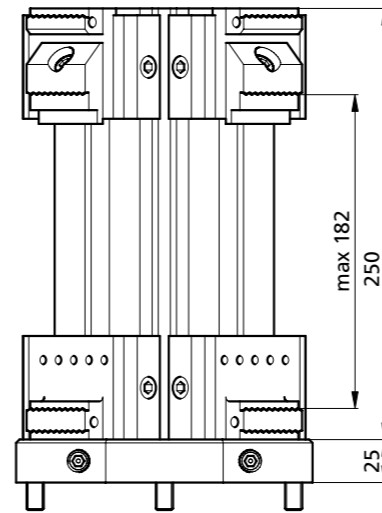


Module gemäss Zusammenstellzeichnung
falls nicht anders vereinbart.
*Modules according to assembly drawing
if not agreed otherwise.*

YASDA
PX30i



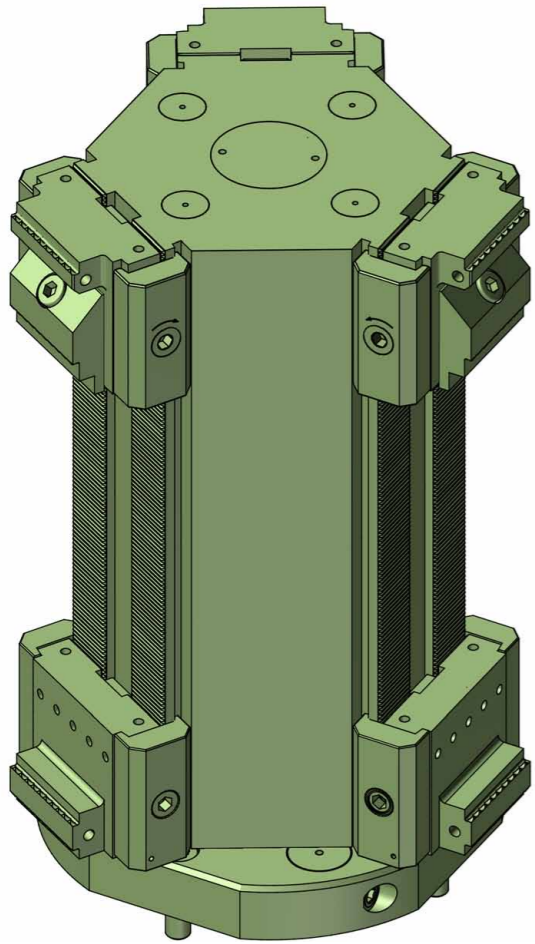
Mehr auf Seite 24
More on page 24


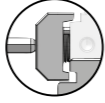

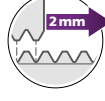




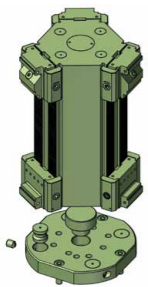
powerCLAMP

PCT Spannturm 3-seitig inkl. Adapterflansch
PCT 3-sided clamping tower incl. adapter flange



- >200** Verschiedene Module
Different Modules
-  powerCLAMP Schnittstelle
powerCLAMP interface
-  powerCLAMP Pratzensystem
powerCLAMP side clamp system
- M** Höchste Modularität
Highest modularity
-  Keine spänefüllenden T-Nuten
No chip catching T-slots
-  Positionierschritte von 2 mm
Positioning increments of 2 mm

Bestellschlüssel Order code	Bezeichnung Description	~ Kg	Spannstellen Clamping areas	Spannbereich Clamping area
YAPX30I-SET24	Maschinenset 24 / Machine set 24	46,8	3	max. 222

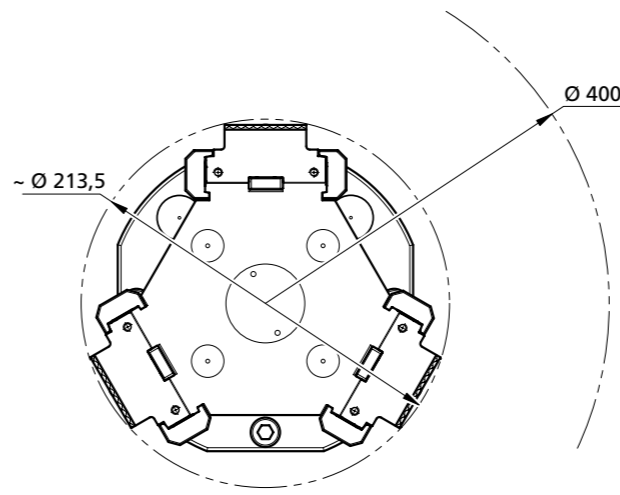
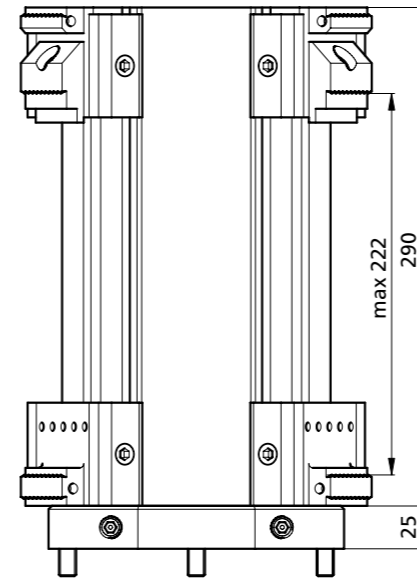
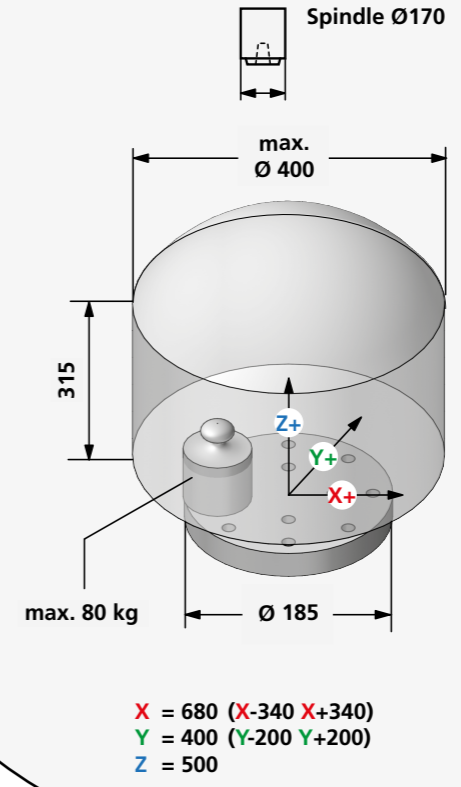


YAPX30I-SET24

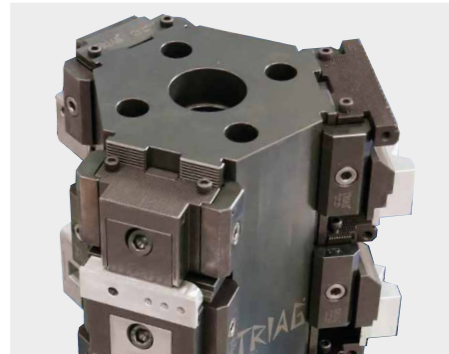
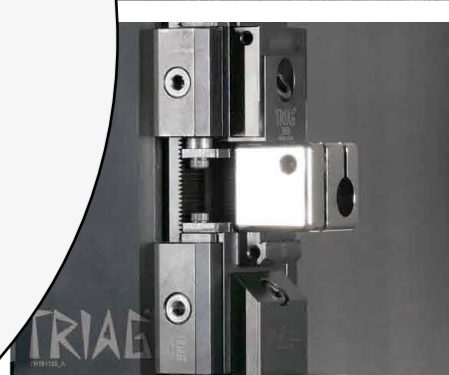
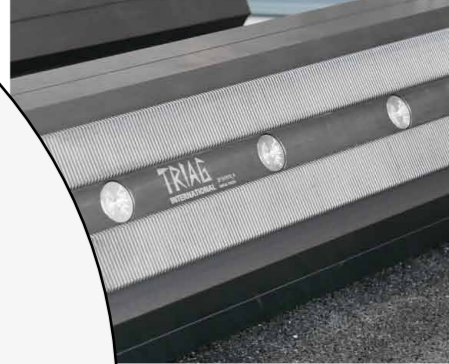
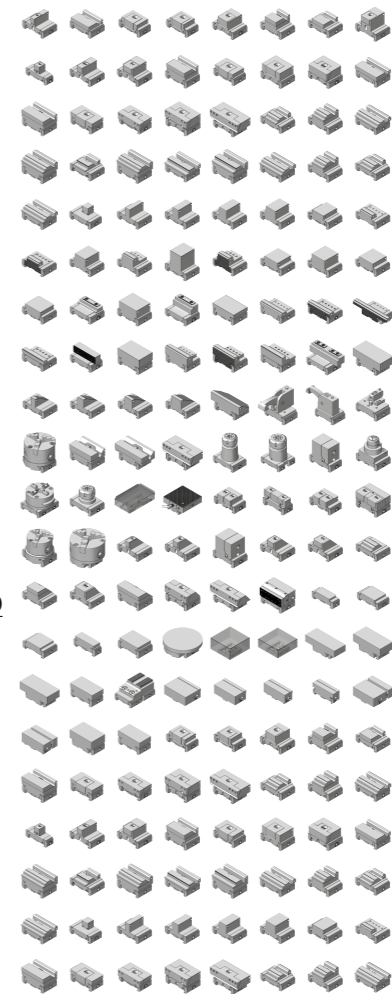


Module gemäss Zusammenstellzeichnung
falls nicht anders vereinbart.
Modules according to assembly drawing
if not agreed otherwise.

YASDA
PX30i



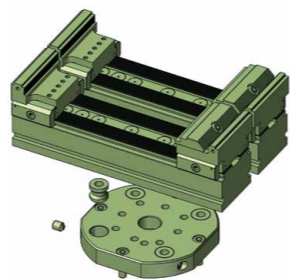
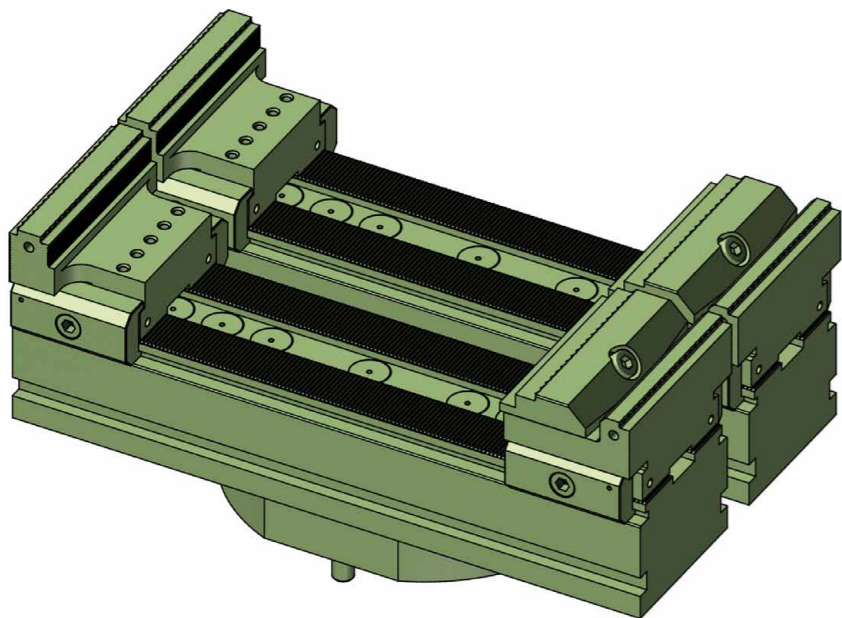
Mehr auf Seite 24
More on page 24



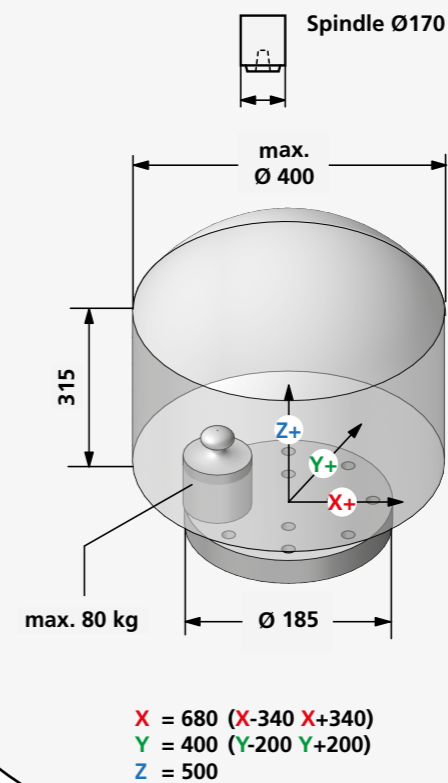


powerCLAMP

PCB 320H60 inkl. Adapterflansch
PCB 320H60 incl. adapter flange



YAPX30I-SET25



Mehr auf Seite 24
More on page 24

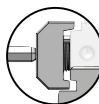
Bestellschlüssel Order code	Bezeichnung Description	~ Kg	Spannstellen Clamping areas	Spannbereich Clamping area
YAPX30I-SET25	Maschinenset 25 / Machine set 25	33,5	2	max. 248

>200

Verschiedene Module
Different Modules



powerCLAMP Schnittstelle
powerCLAMP interface



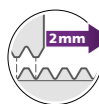
powerCLAMP Pratzensystem
powerCLAMP side clamp system

M

Höchste Modularität
Highest modularity

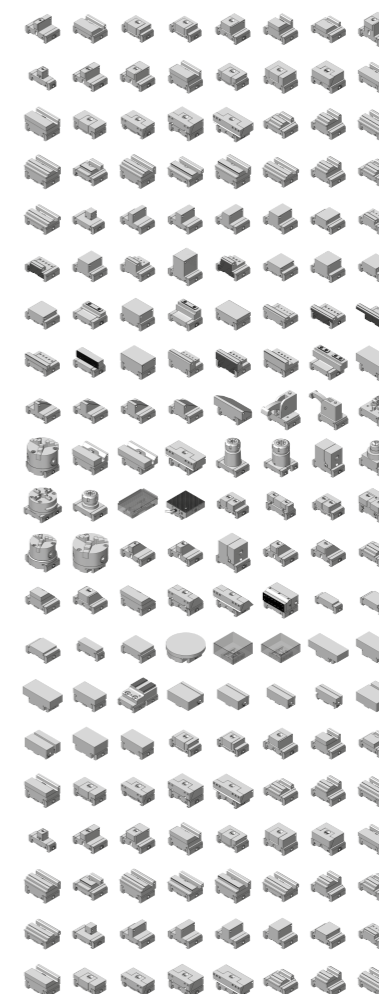
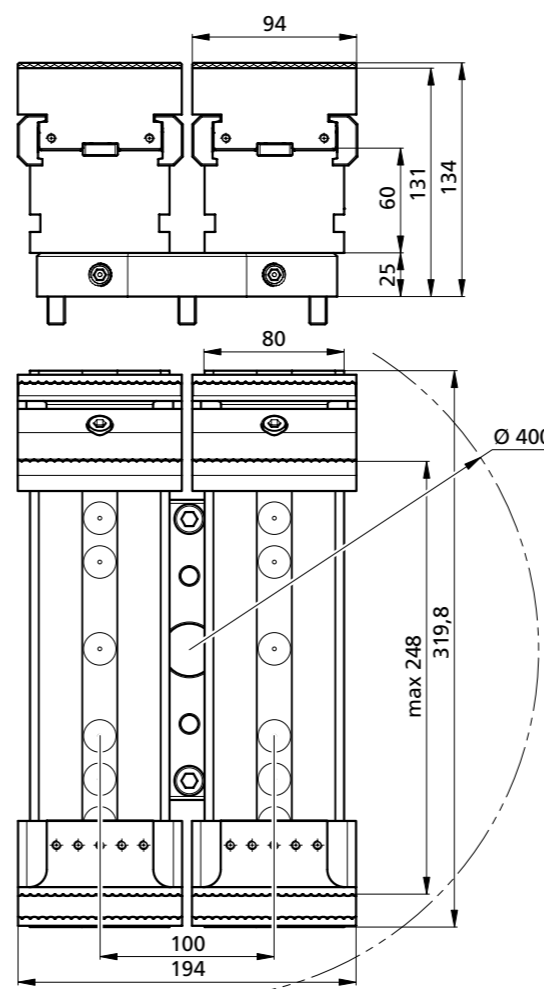


Keine spänefüllenden T-Nuten
No chip catching T-slots



Positionierschritte von 2 mm
Positioning increments of 2 mm

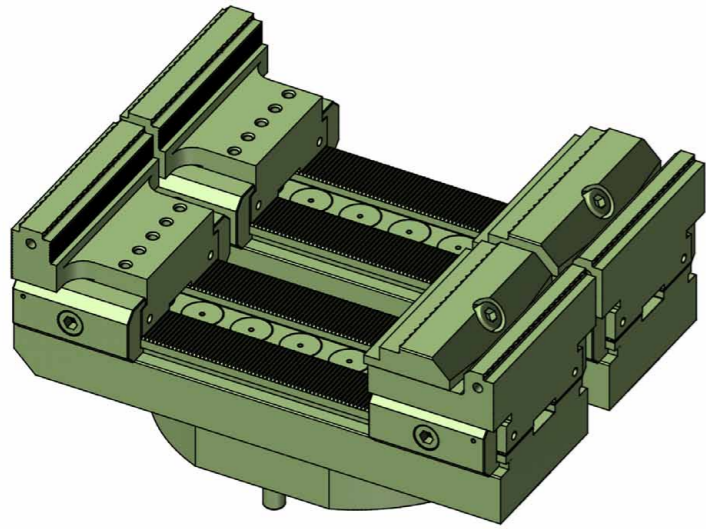
Module gemäss Zusammenstellzeichnung
falls nicht anders vereinbart.
Modules according to assembly drawing
if not agreed otherwise.



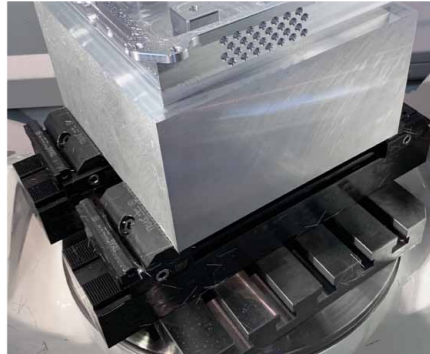
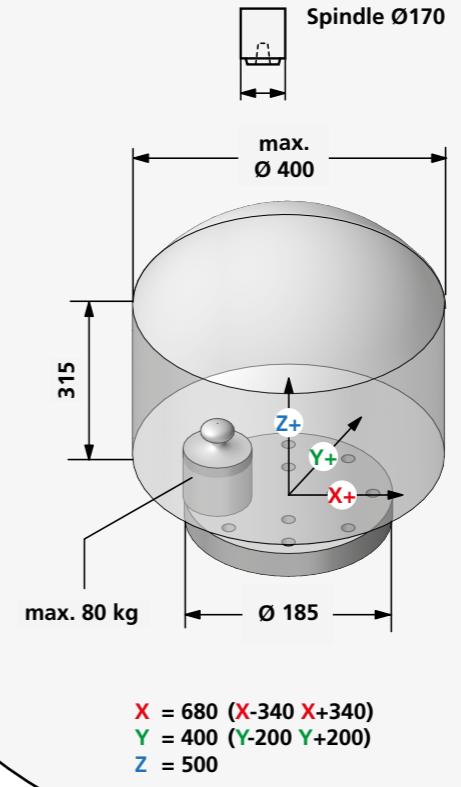


powerCLAMP

PCB 250 inkl. Adapterflansch
PCB 250 incl. adapter flange



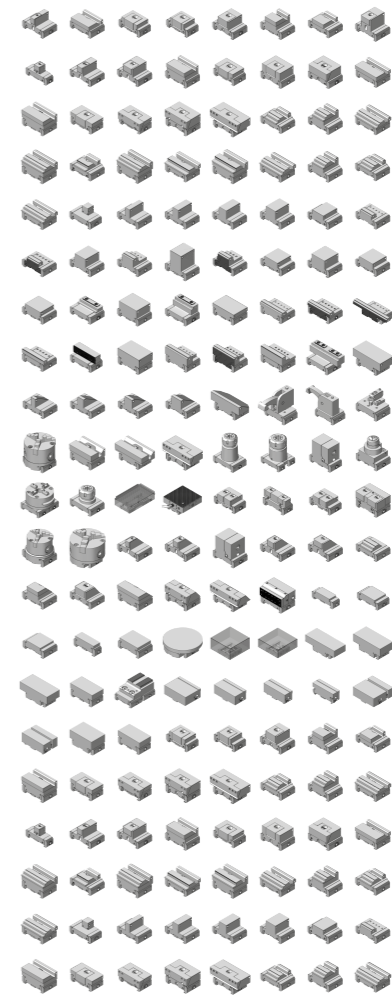
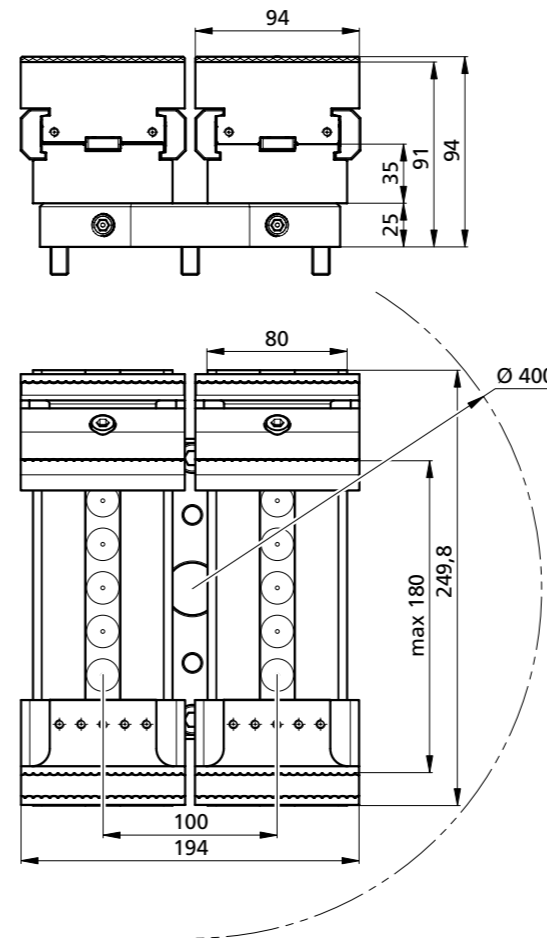
YAPX30I-SET26



Mehr auf Seite 24
More on page 24

Bestellschlüssel Order code	Bezeichnung Description	~ Kg	Spannstellen Clamping areas	Spannbereich Clamping area
YAPX30I-SET26	Maschinenset 26 / Machine set 26	19,5	2	max. 180

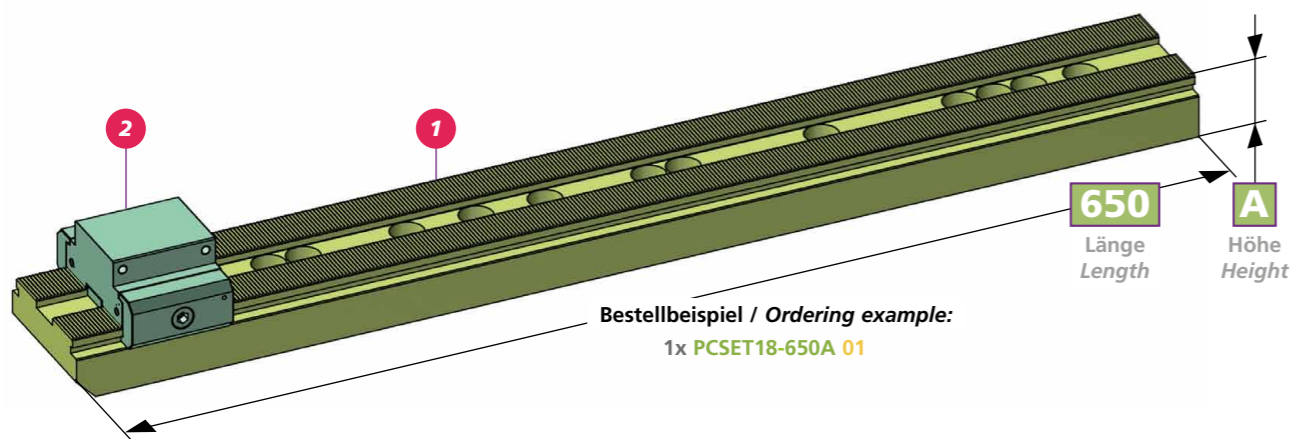
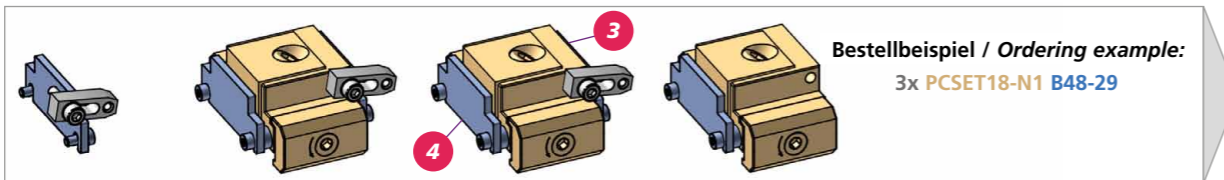
- >200** Verschiedene Module
Different Modules
- powerCLAMP Schnittstelle
powerCLAMP interface
- powerCLAMP Pratzensystem
powerCLAMP side clamp system
- M** Höchste Modularität
Highest modularity
- Keine spänefüllenden T-Nuten
No chip catching T-slots
- Positionierschritte von 2 mm
Positioning increments of 2 mm



Module gemäss Zusammenstellzeichnung
falls nicht anders vereinbart.
Modules according to assembly drawing
if not agreed otherwise.

...X **PCSET18-650A** **01**

Stellen Sie Ihre eigenen Sets zusammen / Set up your own starter kits



Zu jeder Basisschiene gehört 1 Anschlagmodul «Tabelle 2» nach Ihrer Wahl!
To each base rail one end module «table 2» of your choice is included!

Basisschienen / Base-rails	PCSET18-250A PCB2550250	PCSET18-500A PCB4050500	PCSET18-700A PCB4050700	A=H35
	PCSET18-350A PCB4050350	PCSET18-550A PCB4050550	PCSET18-750A PCB4050750	
	PCSET18-400A PCB4050400	PCSET18-600A PCB4050600	PCSET18-800A PCB4050800	
	PCSET18-450A PCB4050450	PCSET18-650A PCB4050650		B=H60
	PCSET18-320B PCB50-320H60	PCSET18-650B PCB100-650H60		
	PCSET18-400B PCB100-400H60	PCSET18-690B PCB100-690H60		
PCSET18-500B PCB100-500H60	PCSET18-850B PCB100-850H60			
PCSET18-600B PCB100-600H60				

Anschlagmodule / End modules	Breite / Width 48mm		Breite / Width 78mm		Breite / Width 94mm	
	PAND48-34 01 H=34	PAND48-49 02 H=49	PAND78-34 05 H=34	PAND78-49 06 H=49	PAND94-34 07 H=34	PAND94-49 08 H=49
	prägen / stamping		prägen / stamping		prägen / stamping	
	PAND48-34PRF-A1 03 H=34	PAND48-49PRF-A1 04 H=49	PAND94-34PRF-A1 09 H=34	PAND94-49PRF-A1 10 H=49		

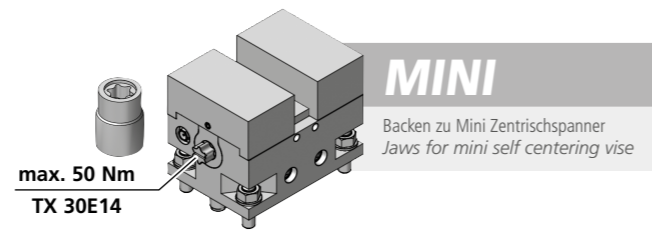
...X **PCSET18-N1** **B48-29**

Niederzugspannmodule / Pull down clamp modules	Breite / Width 48mm		Breite / Width 78mm		Breite / Width 94mm	
	PCSET18-N1 H=34 PS1 R 48N34 B80N	PCSET18-N2 H=49 PS1 R 48N49 B80N	PCSET18-N5 H=49 PS1 R 78N49 B90R78	PCSET18-N6 H=49 PS1 F 78N49 B90F78	PCSET18-N7 H=49 PS1 R 94N49 B90	PCSET18-N8 H=49 PS1 F 94N49 B90
	PCSET18-N3 H=34 PS1 F 48N34 B80N	PCSET18-N4 H=49 PS1 F 48N49 B80N			PCSET18-N9 H=49 PS1 R 94N49 B93	

Linearspannmodule / Linear clamp modules	Breite / Width 48mm		Breite / Width 78mm		Breite / Width 94mm	
	prägen / stamping		prägen / stamping		prägen / stamping	
	PCSET18-L1 H=34 PS1 PF 48L34 B115P	PCSET18-L2 H=49 PS1 PF 48L49 B115P	PCSET18-L5 H=34 PS1 R 78L34 B141	PCSET18-L6 H=34 PS1 F 78L34 B140	PCSET18-L9 H=34 PS1 PF 94L34 B120P	PCSET18-L11 H=49 PS1 PF 94L49 B120P
	PCSET18-L3 H=49 PS1 R 48L49 B106	PCSET18-L4 H=49 PS1 F 48L49 B105	PCSET18-L7 H=49 PS1 R 78L49 B141	PCSET18-L8 H=49 PS1 F 78L49 B140	PCSET18-L12 H=34 PS1 R 94L34 B111	PCSET18-L13 H=34 PS1 F 94L34 B110
PCSET18-L16 H=34 PS1 R 48L34 B106	PCSET18-L17 H=34 PS1 F 48L34 B105	* Bei jedem Spannmodul sind 2 Parallelunterlagen nach Ihrer Wahl und 1 Fräsanschlag enthalten Each clamp module included 2 parallels of your choice and 1 milling buffer		PCSET18-L14 H=49 PS1 R 94L49 B111	PCSET18-L15 H=49 PS1 F 94L49 B110	

Inkl. 2 x Parallelunterlage Incl. 2 x Steel parallels	Breite / Width 48mm		Breite / Width 78mm		Breite / Width 94mm		Fräsanschlag Milling buffer 1 x Inklusive / Included
		B48- PCU 20 047 PCU 24 047 PCU 29 047 PCU 31 047 PCU 34 047 PCU 39 047 PCU 44 047 PCU 46 047		B78- PCU 20 077 PCU 24 077 PCU 29 077 PCU 31 077 PCU 34 077 PCU 39 077 PCU 44 077		B94- PCU 14 093 PCU 20 093 PCU 24 093 PCU 29 093 PCU 31 093 PCU 34 093 PCU 39 093 PCU 44 093 PCU 46 093 PCU 47 093	

Drehmoment Torque		Spannkraft Workholding force	
10 Nm	lb-ft 7,4 = 0,2 t	200 daN	
20 Nm	lb-ft 14,8 = 0,5 t	500 daN	
30 Nm	lb-ft 22,2 = 1,0 t	1'000 daN	
40 Nm	lb-ft 29,6 = 1,3 t	1'300 daN	
50 Nm	lb-ft 37,0 = 1,6 t	1'600 daN	



Prägebacken Stamping jaws	B175-26 Spannbereich / Clamping range 6-26 mm C = 70 H = 20 L = 40 i 57HRC	B175-45 Spannbereich / Clamping range 25-45 mm C = 70 H = 20 L = 40 i 57HRC	B175-64 Spannbereich / Clamping range 44-64 mm C = 70 H = 20 L = 40 i 57HRC
	B175-83 Spannbereich / Clamping range 63-83 mm C = 70 H = 20 L = 40 i 57HRC	B175-102 Spannbereich / Clamping range 83-102 mm C = 70 H = 20 L = 50 i 57HRC	B175-121 Spannbereich / Clamping range 101-121 mm C = 70 H = 20 L = 60 i 57HRC
Stufenbacken Stepped jaws	B173-26 Spannbereich / Clamping range 6-26 mm C = 70 H = 24 L = 40 i HV700 x 0,2 mm	B173-45 Spannbereich / Clamping range 25-45 mm C = 70 H = 24 L = 40 i HV700 x 0,2 mm	B173-64 Spannbereich / Clamping range 44-64 mm C = 70 H = 24 L = 40 i HV700 x 0,2 mm
	B173-83 Spannbereich / Clamping range 63-83 mm C = 70 H = 24 L = 40 i HV700 x 0,2 mm	B173-102 Spannbereich / Clamping range 82-102 mm C = 70 H = 24 L = 50 i HV700 x 0,2 mm	B170, B172 (weich / soft) Spannbereich / Clamping range 0-20 mm C = 70 H = 24 L = 40 i HV700 x 0,2 mm
Universalbacken Universal jaws	B176-80 Spannbereich / Clamping range 8-80 mm *PRG1003M8 C = 70 H = 24 L = 40 *PRG1003M8 Optional erhältlich / Optional accessory	Zum Erstellen Ihrer individuellen Formbacke: Maximalen Bearbeitungsprofiltiefe If a dedicated jaw is being machined: Max. workpiece machining depth	

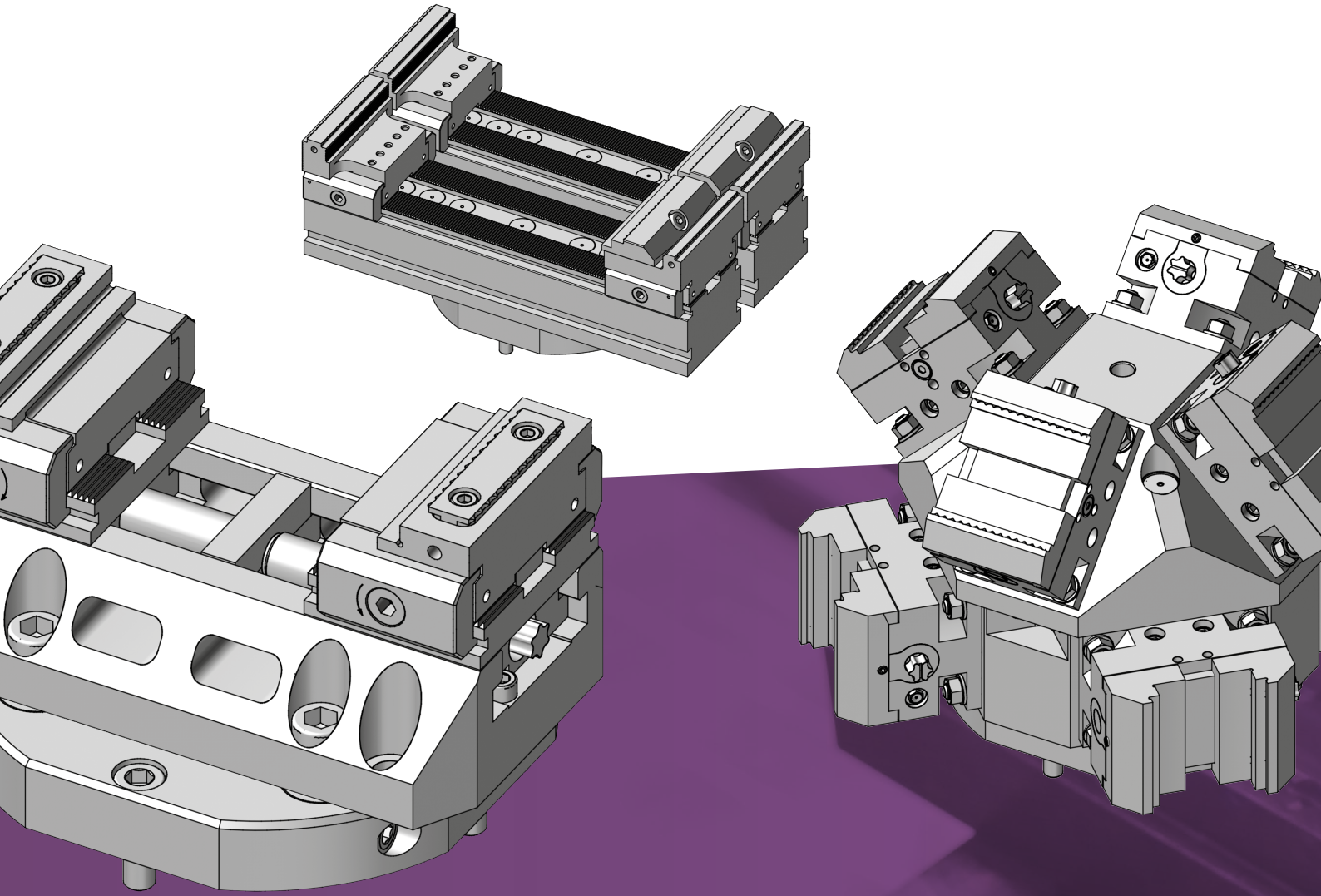
Für mehr Informationen, Zubehör oder Backensets > [Gesamtkatalog/triCENTRO](#)
For further informations, accessories or jaw sets > [General catalogue/triCENTRO](#)



Drehmoment Torque		Spannkraft Workholding force	
4 Nm	lb-ft 3 = 0,46 t	457 daN	
5 Nm	lb-ft 3,7 = 0,75 t	571 daN	
6 Nm	lb-ft 4,4 = 0,69 t	686 daN	
7 Nm	lb-ft 5,18 = 0,8 t	800 daN	

Prägebacken Stamping jaws	B190-13 Spannbereich / Clamping range 3-13 mm C = 70 H = 20 L = 40 i 57HRC	B190-22 Spannbereich / Clamping range 12-22 mm C = 70 H = 20 L = 40 i 57HRC	B190-31 Spannbereich / Clamping range 21-31 mm C = 70 H = 20 L = 40 i 57HRC
	B190W6-40 Spannbereich / Clamping range 0-10 mm H1 = 2,2 H = 6 i 1.7225	B190W10-40 Spannbereich / Clamping range 0-10 mm H1 = 6,2 H = 10 i 1.7225	B190W20-40 Spannbereich / Clamping range 0-10 mm H1 = 16,2 H = 20 i 1.7225
Formbacke weich Dedicated jaws	B190W30-40 Spannbereich / Clamping range 0-10 mm H1 = 26,2 H = 30 i 1.7225	H1: Zum Erstellen Ihrer individuellen Formbacke: Schnittzeichnung zum Ermitteln der max. Bearbeitungsprofiltiefe H1: If a dedicated jaw is being machined: Sectional drawing to determine the maximum machining depth.	

Für mehr Informationen, Zubehör oder Backensets > [Gesamtkatalog/triCENTRO](#)
For further informations, accessories or jaw sets > [General catalogue/triCENTRO](#)



Triag International AG

Bösch 84 CH-6331 Hünenberg

☎ +41 41 727 27 77

✉ spannen@triag-int.ch

✉ clamping@triag-int.ch



Mass- und Konstruktionsänderungen
bleiben uns vorbehalten. *We reserve
the right to modify dimensions and
structural design.*

triag-int.ch

Official Website



11
20