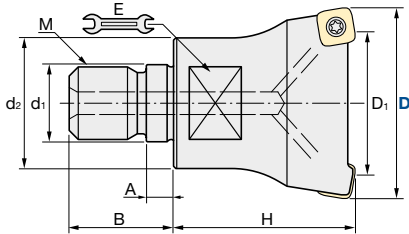
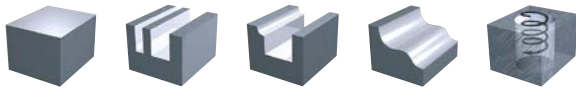


ASRFM | Turbo4 - Mini | Modular Type

Q max High Efficient	Jet Air Hole	▽ Roughing	▽▽ Semi-Finishing	HRC 60	No. of Teeth 2 – 5
--------------------------------	------------------------	----------------------	-----------------------------	------------------	------------------------------



Diameter Holder only [mm]	CAM Radius:	Fastening Torque [Nm]
-0.1/-0.2 mm	2.0 mm	2.0 Nm

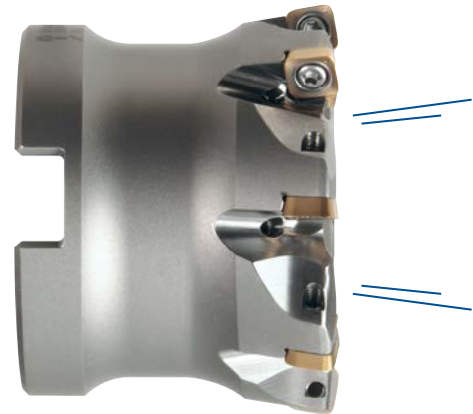
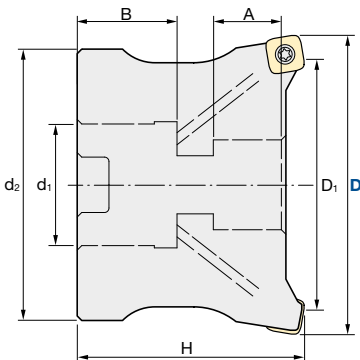
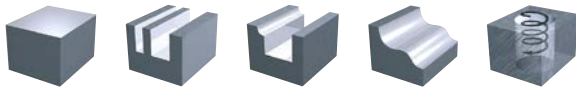
Modular Type												
ID Code	Item Code	Flutes	D	H	D ₁	d ₁	M	d ₂	A	B	Wrench	Inserts
FH552	ASRFM-3020R-2-M10	2	20	30	8	10.5	M10	17.8	5.5	19	15	SPNW07T2TR SPMT07T2TR SPMT07T2ER-LF
FH553	ASRFM-3025R-3-M12	3	25	35	13	12.5	M12	20.8	5.5	22	17	
FH554	ASRFM-3032R-4-M16	4	32	40	20	17	M16	28.8	6	23	22	
FH555	ASRFM-3035R-4-M16	4	35	40	23	17	M16	28.8	6	23	22	
FH556	ASRFM-3040R-5-M16	5	40	40	28	17	M16	28.8	6	23	22	
FH557	ASRFM-3042R-5-M16	5	42	40	30	17	M16	28.8	6	23	22	

↑ Wrench Size

[ASC | Carbide Shanks for Modular Mills & AS](#) | [Steel Shanks for Modular Mills: page 8](#)

ASRFB | Turbo4 - Mini | Bore Type

Q max High Efficient	Jet Air Hole	▽ Roughing	▽▽ Semi-Finishing	HRC 60	No. of Teeth 5 – 8
--------------------------------	------------------------	----------------------	-----------------------------	------------------	------------------------------



Diameter Holder only [mm]	CAM Radius:	Fastening Torque [Nm]
-0.1/-0.2 mm	2.0 mm	2.0 Nm

Bore Type										
ID Code	Item Code	Z	D	H	D ₁	d ₁	d ₂	A	B	Inserts
FH558	ASRFB-3040RM-5-16	5	40	40	28	16	35	10.54	19	SPNW07T2TR SPMT07T2TR SPMT07T2ER-LF
FH559	ASRFB-3042RM-5-16	5	42	40	30	16	35	10	19	
FH560	ASRFB-3050RM-7-22	7	50	50	38	22	40	17	20	
FH561	ASRFB-3052RM-7-22	7	52	50	40	22	40	17	20	
FH562	ASRFB-3063RM-8-27	8	63	50	51	27	60	16	22	
FH563	ASRFB-3066RM-8-27	8	66	50	54	27	60	16	22	

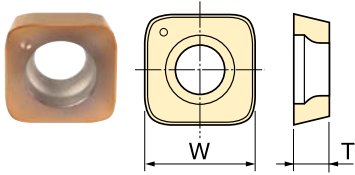
INSERTS ASRF | Turbo4 - Mini


Fig.1 Standard type

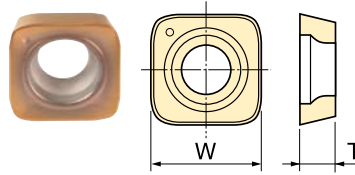


Fig.2 Low-resistance breaker type

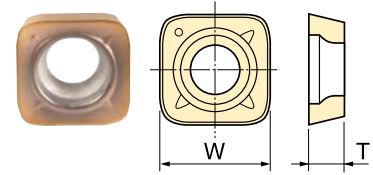
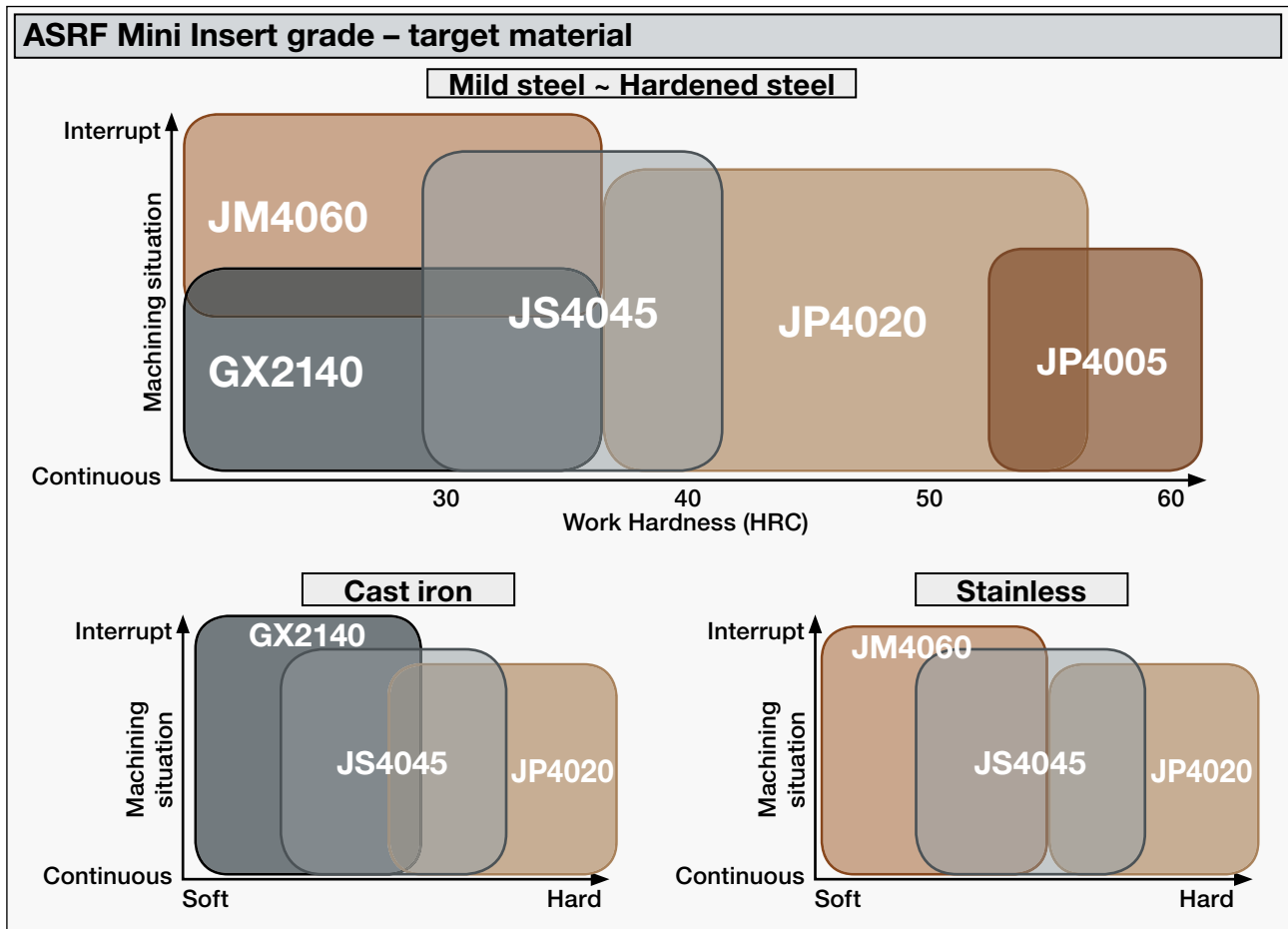




Fig.3 Low-Force type

Inserts	Tolerance Class	Grade					Size (mm)			Shape
		GX2140	JM4060	JS4045	JP4020	JP4005	CAM R	W	T	
Item code		ID-Code								
SPNW07T2TR	M	WF716	WF717	WF715	WF714	WF713	2	7.94	2.78	Fig.1
SPMT07T2TR			WF720	WF719	WF718					Fig.2
SPMT07T2ER-LF			WF721							Fig.3

GX2140	CVD · For heavy roughing of mild steels Recommended for dry cutting
JM4060	PVD · For stainless steels
JS4045	PVD · General grade for 30–40HRC Recommended for dry cutting
JP4020	PVD · For pre-hardened steels 40–55HRC
JP4005	PVD · For hardened steels > 50HRC



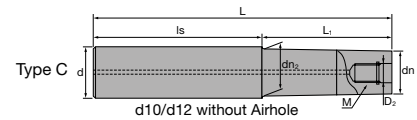
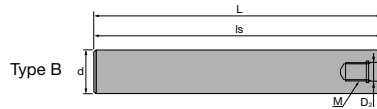
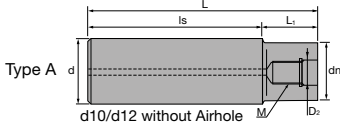
Clamp Screw		Wrench	
			
ID-Code	Item-Code	ID-Code	Item-Code
ET176	265-143	ET011	104-T10

Cutting Conditions | Schnittwerte | Condizioni di taglio | Condiciones de Corte | Conditions de coupe | Valores de corte:

D 20 (Z2) – D 35 (Z4): Page 4–5 | D 40 (Z5) – D 66 (Z8): Page 6–7

ASC | Carbide Shanks for Modular Mills

MMC Hitachi Tool Engineering Europe GmbH



Carbide Shank		ID Code	Item Code	D ₂	M	L	L ₁	Is	dn	dn ₂	d	Type				
Without Airhole	FH137	ASC10-6.5-74-24	6.5	M6	74	24	50	9.3	-	10	A					
	FH254	ASC10-6.5-84-34			84	34										
	FH255	ASC10-6.5-114-24			114	24						90				
	FH138	ASC10-6.5-114-49			74	49	65									
	FH139	ASC12-6.5-74-24			74	24	50					11	11.5	12	C	
	FH256	ASC12-6.5-94-44			94	44										
	FH257	ASC12-6.5-129-24			129	24										105
	FH140	ASC12-6.5-129-64			129	64										65
With Airhole	FH141	ASC16-8.5-95-30	8.5	M8	95	30	65	14.5	15.5	16	C					
	FH258	ASC16-8.5-120-55			120	55										
	FH142	ASC16-8.5-140-75			140	75										
	FH260	ASC16-8.5-160-30			160	30						130				
	FH259	ASC16-8.5-160-95			160	95						65				
	FH143	ASC20-10.5-120-50	10.5	M10	120	50	70	18	-	20	A					
	FH261	ASC20-10.5-170-90Z			170	90	80	18.5	19.5		C					
	FH144	ASC20-10.5-220-50			220	50	170	18	-		A					
	FH262	ASC20-10.5-220-120Z			220	120	100	18.5	19.5		20	C				
	FH263	ASC20-10.5-270-150Z			270	150	120									
	FH264	ASC20-10.5-270-50Z	270	50	220											
	FH145	ASC25-12.5-145-65	12.5	M12	145	65	80	23	-	25	A					
	FH146	ASC25-12.5-265-65			265		200									
	FH265	ASC25-12.5-215-115			215		115					100				
	FH266	ASC25-12.5-265-145			265	145	120									
	FH268	ASC25-12.5-315-65			315	65	250									
	FH267	ASC25-12.5-315-195			315	195	120									
	FH147	ASC32-17-160-80	17	M16	160	80	80	28	-	32	A					
	FH269	ASC32-17-260-140			260	140	120									
	FH148	ASC32-17-310-80			310	80	230									
FH270	ASC32-17-360-240	360			240	120										

- 🇬🇧 SUPER Lock milling chucks or shrink-fit holders can be used.
- 🇩🇪 SUPER Lock Aufnahmen oder Schrumpffutter können verwendet werden.
- 🇮🇹 Possono essere utilizzati mandrini a forte serraggio SUPER Lock.

- 🇪🇸 Aptos para amarrar en portapinzas SUPER Lock.
- 🇫🇷 Les attachements SUPER Lock peuvent être utilisés.
- 🇵🇹 Cones hidráulicos de grande aperto e aperto térmico podem ser usados.

AS | Steel Shanks for Modular Mills


Steel Shank		ID Code	Item Code	D ₂	M	L	L ₁	Is	dn	dn ₂	d	Type
Without Airhole	FH131	AS10-6.5-74-0	6.5	M6	74	-	74	-	-	-	10	B
	FH132	AS12-6.5-84-4			84	4	80	11	-	12	A	
With Airhole	FH133	AS16-8.5-95-15	8.5	M8	95	15	80	14.5	15.5	16	C	
	FH134	AS20-10.5-100-20	10.5	M10	100	20		18	-	20	A	
	FH271	AS25-12.5-115-35	12.5	M12	115	35		23	23	25		
	FH272	AS32-17-110-30	17	M16	110	30		28	28	32		

- 🇬🇧 SUPER Lock milling chucks can be used.
- 🇩🇪 SUPER Lock Aufnahmen können verwendet werden.
- 🇮🇹 Possono essere utilizzati mandrini a forte serraggio SUPER Lock.

- 🇪🇸 Aptos para amarrar en portapinzas SUPER Lock.
- 🇫🇷 Les attachements SUPER Lock peuvent être utilisés.
- 🇵🇹 Cones hidráulicos de grande aperto e aperto térmico podem ser usados.

🇬🇧 For further information about modular chucks please see our brochure *Indexable Modular Series No. 328*

🇩🇪 Weitere Informationen über modulare Werkzeugaufnahmen finden Sie in unserem Prospekt: *Indexable Modular Series No. 328*

🇪🇸 Para obtener más información sobre conos modulares consulte nuestro folleto *Indexable Modular Series No. 328*

🇮🇹 Per maggiori informazioni riguardanti la gamma dei mandrini avvitali consultate il catalogo *Indexable Modular Series No. 328*

🇫🇷 Pour de plus amples informations concernant les attachements modulaires, voyez SVP notre brochure *Indexable Modular Series No. 328*

🇵🇹 Para mais informações sobre Conos Modulares consulte o nosso folheto *Indexable Modular Series No. 328*



Always up to date: Please check our P50 QuickFinder



www.mmc-hitachitool-eu.com/quickfinder

MMC Hitachi Tool Engineering Europe GmbH

Itterpark 12 · 40724 Hilden · Germany · Phone +49 (0) 21 03-24 82-0 · Fax +49 (0) 21 03-24 82-30

E-Mail info@mmc-hitachitool-eu.com · Internet www.mmc-hitachitool-eu.com

© 2018 by MMC Hitachi Tool Engineering Europe GmbH · 2nd Edition · Printed in Germany