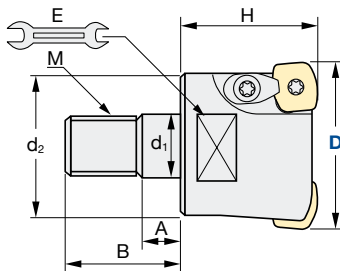
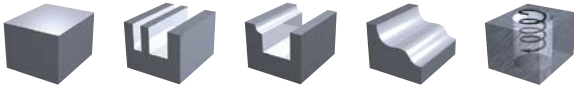


**ASRM | Turbo Modular**


<b>Q max</b> High Efficient	<b>▽</b> Roughing	<b>HRC</b> 50	<b>No. of Teeth</b> 2	<b>No. of Teeth</b> 3	<b>No. of Teeth</b> 4
--------------------------------	----------------------	------------------	--------------------------	--------------------------	--------------------------






Diameter Holder only [mm]  
**0/-0.2 mm**

ID Code	Item Code	Z	D	H	d <sub>1</sub>	d <sub>2</sub>	A	B	C	E	M	Inserts
FH494	<b>ASRM0020-2</b>	2	<b>20</b>	30	10.5	18	6	19	10	15	M10	EPNW-0803TN-10
FH495	<b>ASRM0025-2</b>		<b>25</b>	35	12.5	21	7	22		17	M12	EDNW-10T3TN-10
FH496	<b>ASRM0032-3</b>	3	<b>32</b>	40	17	29	7	23	12	22	M16	
FH497	<b>ASRM0040-4</b>	4	<b>40</b>									



 Inserts p. 7

Parts	Clamp Screw			Clamp Piece Set		Wrench	
							
Body	ID-Code	Item-Code	Fastening Torque [Nm]	ID-Code	Item-Code	ID-Code	Item-Code
<b>ASRM-0020-2</b>	ET32	<b>242-141</b>	<b>2.9Nm</b>	-	-	ET12	<b>104-T15</b>
<b>ASRM-0025-2</b>	ET38	<b>412-141</b>	<b>2.9Nm</b>	ET163	<b>CM3,5-141</b>		
<b>ASRM-0032-3</b>							
<b>ASRM-0040-4</b>							

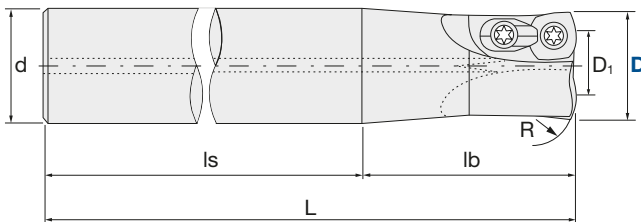
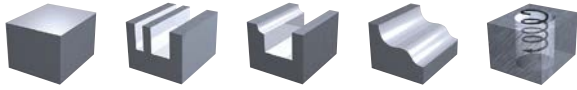
Cutting Conditions | Schnittwerte | Condizioni di taglio | Condiciones de Corte | Conditions de coupe | Valores de corte:

D20mm (Z2) – D25mm (Z2):	p. 8	D32 (Z3) EDNW10T3:	p. 9	D40 (Z4) EDNW10T3:	p. 10
--------------------------	------	--------------------	------	--------------------	-------



**ASR-S** | Turbo - Maximum Volume End Mill - Shank Type - Regular

<b>Q max</b> High Efficient	<b>Jet</b> Air Hole	<b>▽</b> Roughing	<b>HRC</b> 50	<b>No. of Teeth</b> 2	<b>No. of Teeth</b> 3	<b>No. of Teeth</b> 4
--------------------------------	------------------------	----------------------	------------------	--------------------------	--------------------------	--------------------------



Diameter Holder only [mm]  
**0/-0.2 mm**

ID Code	Item Code	Z	D	D <sub>1</sub>	L	d	R	lb	ls	Inserts
FH414	<b>ASRS-0020</b>	2	<b>20</b>	8.8	130	20	10	50	80	EPNW0803TN-10
FH415	<b>ASRS-0025</b>		<b>25</b>	13.8	140	25		60		EDNW10T3TN-10
FH416	<b>ASRS-4032</b>		<b>32</b>	16.6	150	32	15	70		EDNW13T4TN-( )



Inserts p. 7

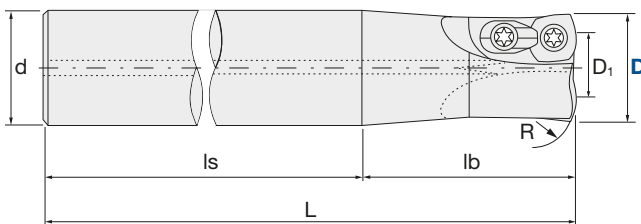
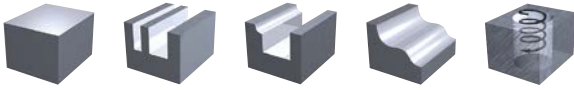
Parts	Clamp Screw			Clamp Piece Set		Wrench	
	ID-Code	Item-Code	Fastening Torque [Nm]	ID-Code	Item-Code	ID-Code	Item-Code
Body	ET32	<b>242-141</b>	<b>2.9Nm</b>	-	-	ET12	<b>104-T15</b>
<b>ASRS-0020</b>							
<b>ASRS-0025</b>	ET38	<b>412-141</b>	<b>2.9Nm</b>	ET163	<b>CM3,5-141</b>	ET14	<b>105-T20</b>
<b>ASRS-4032</b>	ET162	<b>555-141</b>	<b>4.9Nm</b>	ET164	<b>CM5-147</b>		

Cutting Conditions | Schnittwerte | Condizioni di taglio | Condiciones de Corte | Conditions de coupe | Valores de corte:

D20mm (Z2) – D25mm (Z2):	p. 8	D32mm (Z2) EDNW13T4	p. 9
--------------------------	------	---------------------	------

**ASR-L** | Turbo - Maximum Volume End Mill - Shank Type - Long

<b>Q max</b> High Efficient	<b>Jet</b> Air Hole	<b>▽</b> Roughing	<b>HRC</b> 50	<b>No. of Teeth</b> 2
--------------------------------	------------------------	----------------------	------------------	--------------------------






Diameter Holder only [mm]  
**0/-0.2 mm**

ID Code	Item Code	Z	D	D <sub>1</sub>	L	d	R	lb	ls	Inserts
FH419	<b>ASRL-0020</b>	2	<b>20</b>	8.8	180	20	10	100	80	EPNW0803TN-10
FH420	<b>ASRL-0025</b>		<b>25</b>	13.8	200	25		120		EDNW10T3TN-10
FH421	<b>ASRL-4032</b>		<b>32</b>	16.6		32	15	EDNW13T4TN-( )		



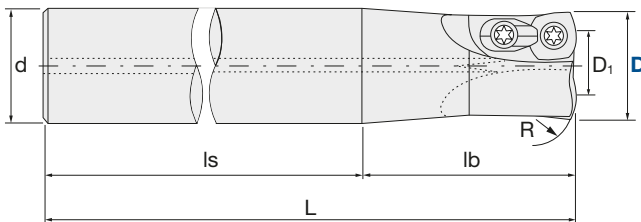
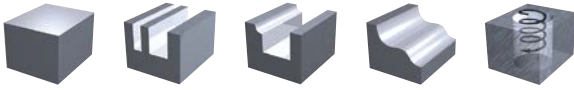
 Inserts p. 7

Parts	Clamp Screw 			Clamp Piece Set 		Wrench 	
	ID-Code	Item-Code	Fastening Torque [Nm]	ID-Code	Item-Code	ID-Code	Item-Code
Body	ET32	<b>242-141</b>	<b>2.9Nm</b>	-	-	ET12	<b>104-T15</b>
<b>ASRL-0020</b>							
<b>ASRL-0025</b>	ET38	<b>412-141</b>	<b>2.9Nm</b>	ET163	<b>CM3,5-141</b>	ET14	<b>105-T20</b>
<b>ASRL-4032</b>	ET162	<b>555-141</b>	<b>4.9Nm</b>	ET164	<b>CM5-147</b>		



**ASR-E** | Turbo - Maximum Volume End Mill - Shank Type - Extra Long

<b>Q max</b> High Efficient	<b>Jet</b> Air Hole	<b>▽</b> Roughing	<b>HRC</b> 50	<b>No. of Teeth</b> 2
--------------------------------	------------------------	----------------------	------------------	--------------------------



Diameter Holder only [mm]  
**0/-0.2 mm**

ID Code	Item Code	Z	D	D <sub>1</sub>	L	d	R	lb	ls	Inserts
FH422	<b>ASRE-0020</b>	2	<b>20</b>	8.8	250	20	10	130	120	EPNW0803TN-10
FH423	<b>ASRE-0025</b>		<b>25</b>	13.8	300	25		180		EDNW10T3TN-10
FH424	<b>ASRE-4032</b>		<b>32</b>	16.6		32	15	EDNW13T4TN-( )		



Inserts p. 7

Parts	Clamp Screw			Clamp Piece Set		Wrench	
	ID-Code	Item-Code	Fastening Torque [Nm]	ID-Code	Item-Code	ID-Code	Item-Code
Body	ET32	<b>242-141</b>	<b>2.9Nm</b>	-	-	ET12	<b>104-T15</b>
<b>ASRE-0020</b>							
<b>ASRE-0025</b>	ET38	<b>412-141</b>	<b>2.9Nm</b>	ET163	<b>CM3,5-141</b>	ET14	<b>105-T20</b>
<b>ASRE-4032</b>	ET162	<b>555-141</b>	<b>4.9Nm</b>	ET164	<b>CM5-147</b>		

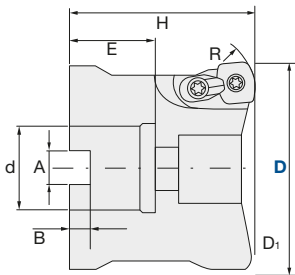
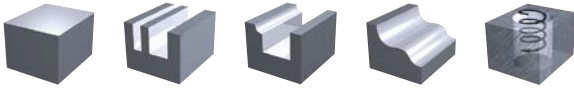
Cutting Conditions | Schnittwerte | Condizioni di taglio | Condiciones de Corte | Conditions de coupe | Valores de corte:

D20mm (Z2) – D25mm (Z2):	p. 8	D32mm (Z2) EDNW13T4	p. 9
--------------------------	------	---------------------	------



**ASR-0000-0** | Turbo - Maximum Volume End Mill - Bore Type

<b>Q max</b> High Efficient	<b>▽</b> Roughing	<b>HRC</b> 50	<b>No. of Teeth</b> 4	<b>No. of Teeth</b> 5	<b>No. of Teeth</b> 6
--------------------------------	----------------------	------------------	--------------------------	--------------------------	--------------------------



Diameter Holder only [mm]  
**0/-0.2 mm**

ID Code	Item Code	Z	D	D <sub>1</sub>	H	E	R	A	B	d	Item Code
FH433	<b>ASR-4050M-4</b>	4	50	34.6	50	20	15	10.4	6.3	22	EDNW13T4TN-( )
FH437	<b>ASR-0050M-5</b>	5		38.8			10				EDNW10T3TN-10
FH434	<b>ASR-5063M-4</b>	4	63	47.6	70	22	15	12.4	7	27	EDNW15T4TN-( )
FH438	<b>ASR-0063M-6</b>	6		51.8			10				EDNW10T3TN-10
FH435	<b>ASR-5080M-5</b>	5	80	64.6	70	25	15	14.4	8	32	EDNW15T4TN-( )
FH436	<b>ASR-5100M-6</b>	6	100	84.6			15				EDNW15T4TN-( )

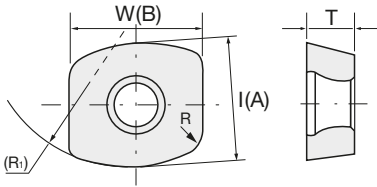
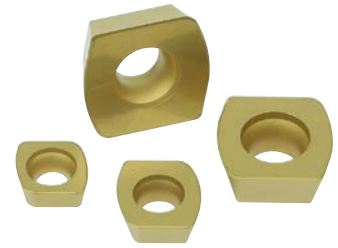


Parts	Clamp Screw			Clamp Piece Set		Wrench	
Body	ID-Code	Item-Code	Fastening Torque [Nm]	ID-Code	Item-Code	ID-Code	Item-Code
<b>ASR-4050M-4</b>	ET162	<b>555-141</b>	<b>4.9Nm</b>	ET164	<b>CM5-147</b>	ET14	<b>105-T20</b>
<b>ASR-0050M-5</b>	ET038	<b>412-141</b>	<b>2.9Nm</b>	ET163	<b>CM3,5-141</b>	ET12	<b>104-T15</b>
<b>ASR-5063M-4</b>	ET162	<b>555-141</b>	<b>4.9Nm</b>	ET164	<b>CM5-147</b>	ET14	<b>105-T20</b>
<b>ASR-0063M-6</b>	ET038	<b>412-141</b>	<b>2.9Nm</b>	ET163	<b>CM3,5-141</b>	ET12	<b>104-T15</b>
<b>ASR-5080M-5</b>	ET162	<b>555-141</b>	<b>4.9Nm</b>	ET164	<b>CM5-147</b>	ET14	<b>105-T20</b>
<b>ASR-5100M-6</b>	ET162	<b>555-141</b>	<b>4.9Nm</b>	ET164	<b>CM5-147</b>	ET14	<b>105-T20</b>

Cutting Conditions   Schnittwerte   Condizioni di taglio   Condiciones de Corte   Conditions de coupe   Valores de corte:							
Bore Type	Multiflute Bore Type		Bore Type	Multiflute Bore Type		Bore Type	
D50 (Z4) EDNW13T4	D50 (Z5) EDNW10T3	p. 11	D63 (Z4) EDNW15T4	D63 (Z6) EDNW10T3	p. 12	D80 (Z5) - D100 (Z6)	p. 13



**INSERTS** | Turbo - Maximum Volume End Mill



ID Code	Item Code	Tolerance Class	Grade	R	R <sub>1</sub>	I(A)	T	W(B)
WF569	<b>EPNW-0803TN-10</b>	N	CY250	3	10	8.1	3.18	7.94
WF572	<b>EDNW-10T3TN-10</b>		CY250			10	3.97	10
WF627	<b>EDNW-13T4TN-10</b>		TB6045			13.5	5.56	12.7
WF576	<b>EDNW-13T4TN-15</b>		CY250					
WF629	<b>EDNW-15T4TN-10</b>		TB6045		10	15	14	
WF578	<b>EDNW-15T4TN-15</b>		CY250		15			

Programming Radius



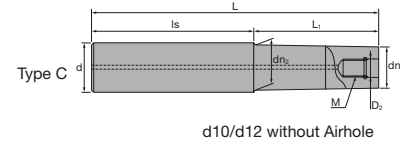
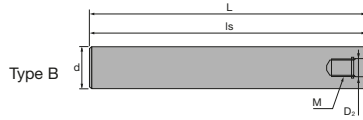
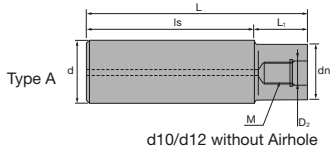
NEW SHAPE AND NEW COATED INSERTS FOR INTERRUPT CUTTING								
ID Code	Item Code	Tolerance Class	Grade	R	R <sub>1</sub>	I(A)	T	W(B)
WF628	<b>EDNW-13T4TN-15Z</b>	N	TB6045	3	15	13.5	5.56	12.7
WF630	<b>EDNW-15T4TN-15Z</b>		TB6045			15		14

Programming Radius

<b>TB6045</b>	PVD Hybrid Coating
<b>CY250</b>	C-Coated (Cermet)



ASC | Carbide Shanks for Modular Mills



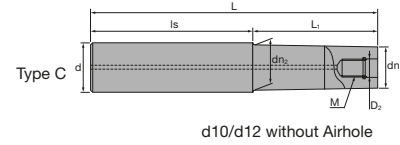
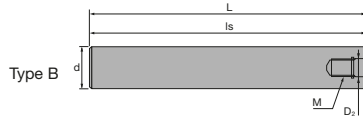
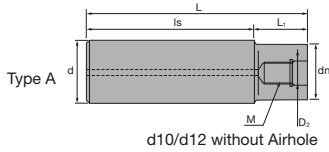
Carbide Shank															
	ID Code	Item Code	D <sub>2</sub>	M	L	L <sub>1</sub>	L <sub>s</sub>	dn	dn <sub>2</sub>	d	Type				
Without Airhole	FH137	ASC10-6.5-74-24	6.5	M6	74	24	50	9.3	-	10	A				
	FH254	ASC10-6.5-84-34			84	34									
	FH255	ASC10-6.5-114-24			114	24						90			
	FH138	ASC10-6.5-114-49			114	49	65								
	FH139	ASC12-6.5-74-24			74	24	50					11	11.5	12	C
	FH256	ASC12-6.5-94-44			94	44									
	FH257	ASC12-6.5-129-24			129	24									
	FH140	ASC12-6.5-129-64			129	64	65								
With Airhole	FH141	ASC16-8.5-95-30	8.5	M8	95	30	65	14.5	15.5	16	C				
	FH258	ASC16-8.5-120-55			120	55									
	FH142	ASC16-8.5-140-75			140	75									
	FH260	ASC16-8.5-160-30			160	30	130								
	FH259	ASC16-8.5-160-95			160	95	65								
	FH143	ASC20-10.5-120-50	10.5	M10	120	50	70	18	-	20	A				
	FH261	ASC20-10.5-170-90Z			170	90	80	18.5	19.5		C				
	FH144	ASC20-10.5-220-50			220	50	170	18	-		A				
	FH262	ASC20-10.5-220-120Z			220	120	100	18.5	19.5		20	C			
	FH263	ASC20-10.5-270-150Z			270	150	120								
	FH264	ASC20-10.5-270-50Z	270	50	220										
	FH145	ASC25-12.5-145-65	12.5	M12	145	65	80	23	-	25	A				
	FH146	ASC25-12.5-265-65			265		200								
	FH265	ASC25-12.5-215-115			215		115					100			
	FH266	ASC25-12.5-265-145			265	145	120								
	FH268	ASC25-12.5-315-65			315	65	250								
	FH267	ASC25-12.5-315-195			315	195	120								
	FH147	ASC32-17-160-80			17	M16	160					80	80	28	-
	FH269	ASC32-17-260-140	260	140			120								
	FH148	ASC32-17-310-80	310	80			230								
FH270	ASC32-17-360-240	360	240	120											

- SUPER Lock milling chucks or shrink-fit holders can be used.
- SUPER Lock Aufnahmen oder Schrumpffutter können verwendet werden.
- Possono essere utilizzati mandrini a forte serraggio SUPER Lock.

- Aptos para amarrar en portapinzas SUPER Lock.
- Les attachements SUPER Lock peuvent être utilisés.
- Cones hidráulicos de grande aperto e aperto térmico podem ser usados.



AS | Steel Shanks for Modular Mills



Steel Shank		ID Code	Item Code	D <sub>2</sub>	M	L	L <sub>1</sub>	ls	dn	dn <sub>2</sub>	d	Type
Without Airhole	FH131	AS10-6.5-74-0		6.5	M6	74	-	74	-	-	10	B
	FH132	AS12-6.5-84-4				84	4	80	11	-	12	A
With Airhole	FH133	AS16-8.5-95-15		8.5	M8	95	15	80	14.5	15.5	16	C
	FH134	AS20-10.5-100-20		10.5	M10	100	20		18	-	20	A
	FH271	AS25-12.5-115-35		12.5	M12	115	35		23	23	25	
	FH272	AS32-17-110-30		17	M16	110	30		28	28	32	

🇬🇧 SUPER Lock milling chucks can be used.

🇩🇪 SUPER Lock Aufnahmen können verwendet werden.

🇮🇹 Possono essere utilizzati mandrini a forte serraggio SUPER Lock.

🇪🇸 Aptos para amarrar en portapinzas SUPER Lock.

🇫🇷 Les attachements SUPER Lock peuvent être utilisés.

🇵🇹 Cones hidráulicos de grande aperto e aperto térmico podem ser usados.

🇬🇧 For further information about modular chucks please see our brochure *Indexable Modular Series No. 328*

🇩🇪 Weitere Informationen über modulare Werkzeugaufnahmen finden Sie in unserem Prospekt: *Indexable Modular Series No. 328*

🇪🇸 Para obtener más información sobre conos modulares consulte nuestro folleto *Indexable Modular Series No. 328*

🇮🇹 Per maggiori informazioni riguardanti la gamma dei mandrini avvitabili consultate il catalogo *Indexable Modular Series No. 328*

🇫🇷 Pour de plus amples informations concernant les attachements modulaires, voyez SVP notre brochure *Indexable Modular Series No. 328*

🇵🇹 Para mais informações sobre Cones Modulares consulte o nosso folheto *Indexable Modular Series No. 328*

