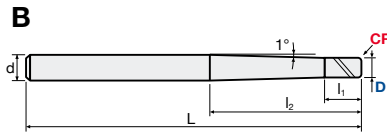
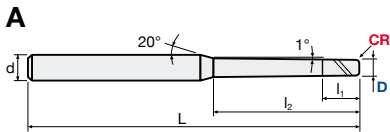
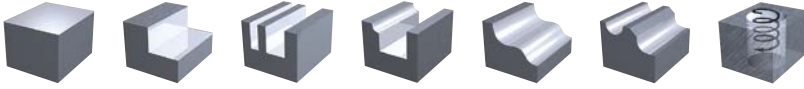




## EPOCH TURBO PENCIL NECK

<b>Q max</b> High Efficient	<b>▽</b> Roughing	<b>▽▽</b> Semi-Finishing	<b>▽▽▽</b> Finishing	<b>HRC</b> 60	<b>No. of Teeth</b> 4
--------------------------------	----------------------	-----------------------------	-------------------------	------------------	--------------------------



<b>Carbide</b> Micro Grain	<b>TH45+</b> Nano-PVD Coating	<b>Rake Angle</b> Negative
-------------------------------	----------------------------------	-------------------------------

Helix Angle	R Tol. [mm]	d Tol.
<b>45°</b>	<b>+/- 0.015</b>	<b>h5</b>

ID Code	Item Code	D	CR	l <sub>2</sub>	l <sub>1</sub>	θ	L	d	Type
EP589	ETMP-4020-12-05	2	0.5	12	3	1°	70	6	A
EP590	ETMP-4020-16-05			16					
EP591	ETMP-4020-20-05			20					
EP592	ETMP-4030-18-08	3	0.8	18	4.5		80		
EP593	ETMP-4030-24-08			24					
EP594	ETMP-4030-30-08			30					
EP595	ETMP-4040-24-10	4	1.0	24	6		90		
EP596	ETMP-4040-32-10			32					
EP597	ETMP-4040-40-10			40					
EP598	ETMP-4050-30-12	5	1.2	30	7.5		100	8	B
EP599	ETMP-4050-40-12			40					
EP600	ETMP-4050-50-12			50					
EP601	ETMP-4060-40-15	6	1.5	40	9	100			
EP602	ETMP-4060-55-15			55					
EP603	ETMP-4060-67-15			67					

Cutting Conditions | Schnittwerte | Condizioni di taglio | Condiciones de Corte | Conditions de coupe | Valores de corte: Page 4-5