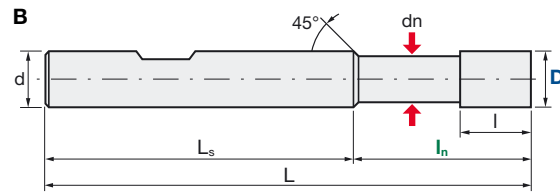
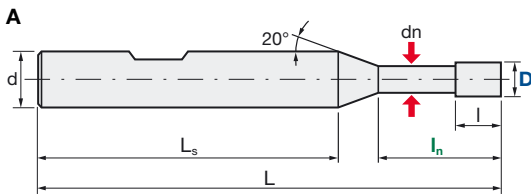




**EPSM-PN** | Epoch Multi Series Square Type

<b>V max</b> High Speed	<b>Q max</b> High Efficient	<b>▽</b> Roughing	<b>▽▽</b> Semi Finishing	<b>▽▽▽</b> Finishing	<b>HRC</b> 52	<b>No. of Teeth</b> 4
----------------------------	--------------------------------	----------------------	-----------------------------	-------------------------	------------------	--------------------------



Type B: D16 and D20 without 45° phase at neck end

<b>Carbide</b> Micro Grain	<b>PN</b> PaNacea Coating	<b>Rake Angle</b> Positive
-------------------------------	------------------------------	-------------------------------

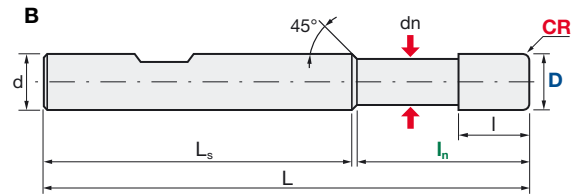
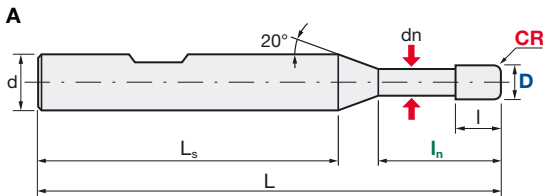
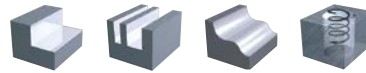
Helix Angle	D Tol. [mm]	d Tol.
40°	D1~D6: 0/-0.015	D1~D12: h5
	D8~D20: 0/-0.02	D16~D20: h6

EPSM-PN Weldon Type (underneck 3xD)										
ID Code	Item Code	Z	D	ln	l	dn	L	Ls	d	Type
EP1215	EPSM-4010-3-W-PN	4	1	3	2.2	0.96	56	46.08	6	A
EP1216	EPSM-4020-6-W-PN		2	6	4.4	1.92		44.40		
EP1217	EPSM-4030-9-W-PN		3	9	6.6	2.88		42.71		
EP1218	EPSM-4040-12-W-PN		4	12	8.8	3.70		40.84		
EP1219	EPSM-4050-15-W-PN		5	15	11.0	4.60		39.08		
EP1220	EPSM-4060-18-W-PN		6	18	13.2	5.50	37.75	8	B	
EP1221	EPSM-4080-24-W-PN		8	24	17.6	7.30	63			38.65
EP1222	EPSM-4100-30-W-PN		10	30	22.0	9.10	74			43.55
EP1223	EPSM-4120-36-W-PN		12	36	26.4	11.00	86			49.50
EP1224	EPSM-4160-48-W-PN		16	48	35.2	14.50	110			62.00
EP1225	EPSM-4200-60-W-PN	20	60	44.0	18.20	125	65.00	20		

Cutting Conditions   Schnittwerte   Condizioni di taglio   Condiciones de Corte   Conditions de coupe   Valores de corte:			
Side Milling: Page 6		Slot Milling: Page 7	
		Side Finishing: Page 8	

**EPSM-CR-PN** | Epoch Multi Series Corner Radius

<b>V max</b> High Speed	<b>Q max</b> High Efficient				<b>HRC</b> 55	<b>No. of Teeth</b> 4
----------------------------	--------------------------------	---	---	---	------------------	--------------------------





**Type B:** D16 and D20 without 45° phase at neck end

<b>Carbide</b> Micro Grain	<b>PN</b> PaNacea Coating	<b>Rake Angle</b> Positive
-------------------------------	------------------------------	-------------------------------

Helix Angle	D Tol. [mm]	d Tol.
40°	D1~D6: 0/-0.015	D1~D12: h5
	D8~D20: 0/-0.02	D16~D20: h6

EPSM Corner R (underneck 3xD) Weldon												
ID Code	Item Code	Z	D	CR	In	l	dn	L	Ls	d	Type	
EP1563	EPSM-4010-3-R0.1-W-PN	4	1	0.1	3	2.2	0.96	56	46.08	6	A	
EP1566	EPSM-4020-6-R0.2-W-PN		2	0.2	6	4.4	1.92					
EP1568	EPSM-4030-9-R0.2-W-PN		3		9	6.6	2.88					
EP1569	EPSM-4040-12-R0.5-W-PN		4	12	8.8	3.70						
EP1571	EPSM-4050-15-R0.5-W-PN		5	15	11.0	4.60						
EP1573	EPSM-4060-18-R0.5-W-PN		6	1	18	13.2	5.50	63	38.65	8	B	
EP1574	EPSM-4060-18-R1.0-W-PN											1.5
EP1575	EPSM-4060-18-R1.5-W-PN											0.5
EP1577	EPSM-4080-24-R0.5-W-PN		8	1	24	17.6	7.30	74	43.55	10	B	
EP1578	EPSM-4080-24-R1.0-W-PN											2
EP1579	EPSM-4080-24-R2.0-W-PN		10	0.5	30	22.0	9.10	86	49.50	12	B	
EP1581	EPSM-4100-30-R0.5-W-PN											1
EP1582	EPSM-4100-30-R1.0-W-PN		12	1	36	26.4	11.00	94	43.55	10	B	
EP1583	EPSM-4100-30-R2.0-W-PN											2
EP1585	EPSM-4120-36-R0.5-W-PN		16	1	48	35.2	14.50	110	62.00	16	B	
EP1586	EPSM-4120-36-R1.0-W-PN											3
EP1587	EPSM-4120-36-R2.0-W-PN		20	1	60	44.0	18.20	125	65.00	20	B	
EP1589	EPSM-4160-48-R1.0-W-PN											3
EP1590	EPSM-4160-48-R3.0-W-PN		1	3	48	35.2	14.50	110	62.00	16	B	
EP1593	EPSM-4200-60-R1.0-W-PN											1
EP1594	EPSM-4200-60-R3.0-W-PN	3										

EPSM Corner R (underneck 5xD) Weldon											
ID Code	Item Code	Z	D	CR	In	l	dn	L	Ls	d	Type
EP1564	EPSM-4010-5-R0.1-W-PN	4	1	0.1	5	2.2	0.96	56	44.08	6	A
EP1565	EPSM-4020-10-R0.2-W-PN		2	0.2	10	4.4	1.92				
EP1567	EPSM-4030-15-R0.2-W-PN		3		15	6.6	2.88				
EP1570	EPSM-4040-20-R0.5-W-PN		4	0.5	20	8.8	3.70	63	39.84	6	A
EP1572	EPSM-4050-25-R0.5-W-PN		5		25	11.0	4.60				
EP1576	EPSM-4060-30-R0.5-W-PN		6		30	13.2	5.50	68	37.75	8	B
EP1580	EPSM-4080-40-R0.5-W-PN		8	40	17.6	7.30	80				
EP1584	EPSM-4100-50-R1.0-W-PN		10	1	50	22.0		9.10	94	43.55	12
EP1588	EPSM-4120-60-R1.0-W-PN		12		60	26.4	11.00	110			
EP1591	EPSM-4160-80-R1.0-W-PN		16		80	35.2	14.50		135	55.00	20
EP1592	EPSM-4200-100-R1.0-W-PN		20	100	44.0	18.20	155				

Cutting Conditions   Schnittwerte   Condizioni di taglio   Condiciones de Corte   Conditions de coupe   Valores de corte:					
Side Milling: Page 6		Slot Milling: Page 7		Side Finishing: Page 8	
				3D finishing: Page 9	