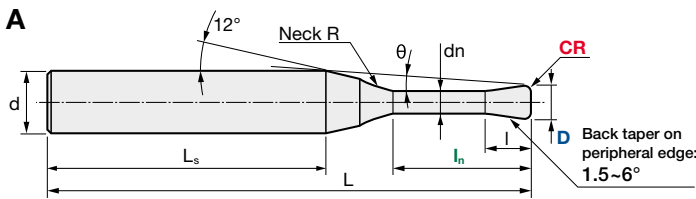
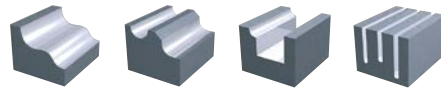


EPDRF-TH | Epoch Deep Radius F

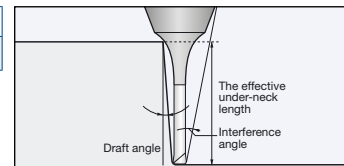
V max High Speed	Q max High Efficient	▽ Roughing	▽▽ Semi-Finishing	▽▽▽ Finishing	HRC 69	No. of Teeth 4
----------------------------	--------------------------------	----------------------	-----------------------------	-------------------------	------------------	--------------------------



※ Back Draft is not available for Diameter 4 mm

Carbide Micro Grain	TH45+ Nano-PVD Coating	Rake Angle Positive
-------------------------------	----------------------------------	-------------------------------

Helix Angle 20°	R Tol. [mm] +/- 0.005	d Tol. h5
---------------------------	---------------------------------	---------------------

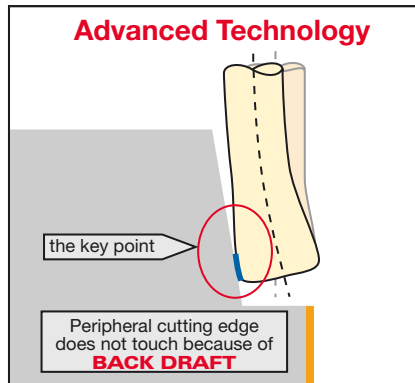
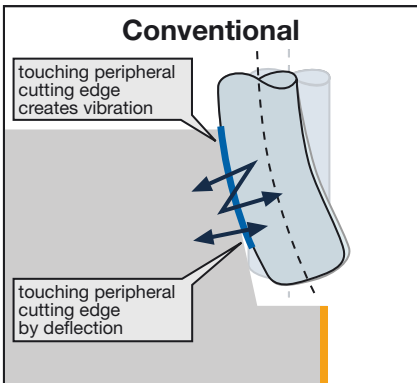


ID Code		Item Code		Size										Actual Effective Length in Incline Angles				
Z	D	CR	l _n	l	dn	L _s	L	d	Neck R	θ°	0.5°	1°	1.5°	2°	3°			
EP716	EPDRF-4010-4-005-TH	1	0.05	4	0.8	0.94	38.81	50		7.67	4.75	4.95	5.13	5.28	5.56			
EP717	EPDRF-4010-6-005-TH			6			36.81			6.51	6.84	7.09	7.30	7.49	8.13			
EP718	EPDRF-4010-8-005-TH			8			34.81			5.66	8.92	9.21	9.46	9.73	10.78			
EP719	EPDRF-4010-10-005-TH			10			32.81			5.00	10.99	11.32	11.59	12.12	13.44			
EP720	EPDRF-4010-12-005-TH			12			40.81			4.48	13.06	13.42	13.84	14.51	16.09			
EP721	EPDRF-4010-16-005-TH			16			36.81	3.71		17.18	17.60	18.40	19.30	21.40				
EP722	EPDRF-4010-20-005-TH			20			32.81	3.17		21.29	21.93	22.96	24.09	26.71				
EP723	EPDRF-4010-4-01-TH			4			38.81	7.70		4.74	4.95	5.12	5.28	5.55				
EP724	EPDRF-4010-6-01-TH			6			36.81	6.54		6.83	7.09	7.30	7.49	8.11				
EP725	EPDRF-4010-8-01-TH			8			34.81	5.68		8.91	9.21	9.45	9.72	10.77				
EP726	EPDRF-4010-10-01-TH	10	32.81	5.02	10.99	11.32	11.59	12.11	13.42									
EP727	EPDRF-4010-12-01-TH	12	40.81	4.50	13.06	13.42	13.83	14.50	16.08									
EP728	EPDRF-4010-16-01-TH	16	36.81	3.72	17.18	17.60	18.39	19.29	21.39									
EP729	EPDRF-4010-20-01-TH	20	32.81	3.17	21.29	21.93	22.95	24.08	26.70									
EP730	EPDRF-4015-4-01-TH	1.5	0.05	4	1.35	1.42	39.94	50	4	7.15	4.80	4.99	5.16	5.31	5.58			
EP731	EPDRF-4015-8-01-TH			8			35.94			5.12	8.96	9.24	9.48	9.77	10.83			
EP732	EPDRF-4015-12-01-TH			12			41.94			3.98	13.09	13.45	13.88	14.56	16.14			
EP733	EPDRF-4015-15-01-TH			15			38.94			3.42	16.18	16.58	17.30	18.15	20.12			
EP734	EPDRF-4015-20-01-TH			20			33.94			2.76	21.32	21.98	23.01	24.13	x			
EP735	EPDRF-4020-4-005-TH	2	0.05	4	1.7	1.92	41.11	50	4	6.46	4.80	4.99	5.16	5.31	5.59			
EP736	EPDRF-4020-8-005-TH			8			37.11			4.46	8.96	9.25	9.48	9.78	10.85			
EP737	EPDRF-4020-12-005-TH			12			43.11			3.40	13.09	13.45	13.89	14.57	16.16			
EP738	EPDRF-4020-16-005-TH			16			39.11			2.75	17.21	17.63	18.45	19.36	x			
EP739	EPDRF-4020-20-005-TH			20			35.11			2.31	21.32	21.98	23.01	24.14	x			
EP740	EPDRF-4020-4-01-TH			4			41.11	6.49		4.80	4.99	5.16	5.31	5.58				
EP741	EPDRF-4020-8-01-TH			8			37.11	4.47		8.96	9.24	9.48	9.77	10.83				
EP742	EPDRF-4020-12-01-TH			12			43.11	3.41		13.09	13.45	13.88	14.56	16.14				
EP743	EPDRF-4020-16-01-TH			16			39.11	2.76		17.21	17.62	18.44	19.35	x				
EP744	EPDRF-4020-20-01-TH			20			35.11	2.31		21.32	21.98	23.01	24.13	x				
EP745	EPDRF-4025-8-01-TH	2.5	0.1	8	2	2.4	38.24	50	6	3.68	9.00	9.27	9.51	9.83	10.89			
EP746	EPDRF-4025-16-01-TH			16			40.24			2.19	17.24	17.67	18.50	19.40	x			
EP747	EPDRF-4025-20-01-TH			20			36.24			1.82	21.35	22.03	23.06	x	x			
EP748	EPDRF-4025-8-02-TH			8			38.24			3.72	8.99	9.27	9.50	9.81	10.86			
EP749	EPDRF-4025-16-02-TH			16			40.24			2.20	17.24	17.67	18.48	19.38	x			
EP750	EPDRF-4025-20-02-TH	20	36.24	1.83	21.34	22.02	23.05	x	x									
EP751	EPDRF-4030-8-02-TH	3	0.2	8	2.5	2.86	44.62	60	6	5.65	9.07	9.33	9.55	9.92	10.99			
EP752	EPDRF-4030-12-02-TH			12			40.62			4.48	13.19	13.52	14.03	14.71	16.30			
EP753	EPDRF-4030-16-02-TH			16			36.62			3.71	17.30	17.77	18.59	19.50	21.60			
EP754	EPDRF-4030-20-02-TH			20			42.62			3.16	21.40	22.13	23.15	24.28	26.91			
EP755	EPDRF-4030-25-02-TH			25			37.62			2.67	26.51	27.57	28.86	30.27	x			
EP756	EPDRF-4030-30-02-TH	30	42.62	2.31	31.62	33.02	34.56	36.25	x									
EP757	EPDRF-4040-12-02-TH	4	0.3	12	4	3.9	43.07	60	6	3.42	13.12	13.47	13.92	14.60	16.17			
EP758	EPDRF-4040-20-02-TH			20			35.07			2.32	21.34	22.02	23.05	24.17	x			
EP759	EPDRF-4040-30-02-TH			30			45.07			1.65	31.57	32.92	34.45	x	x			
EP760	EPDRF-4040-40-02-TH			40			35.07			1.29	41.94	43.81	x	x	x			

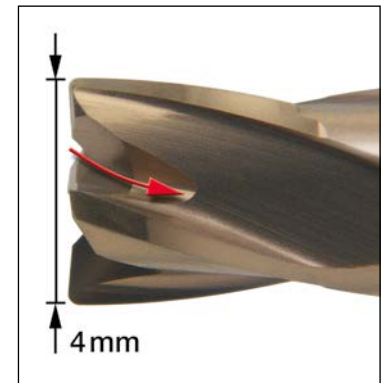
x = no contact

EPDRF-TH | Epoch Deep Radius F

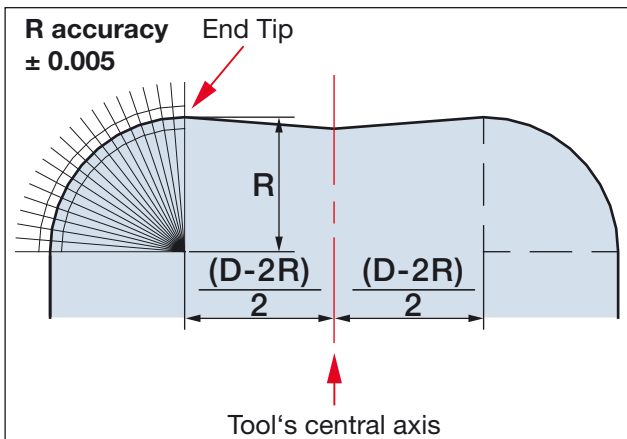
Advanced Technology – Back Draft



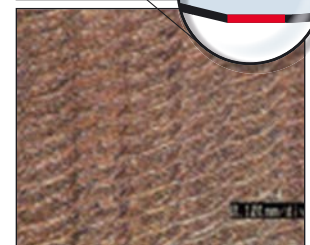
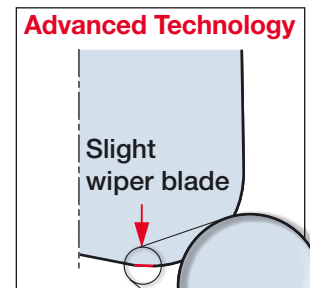
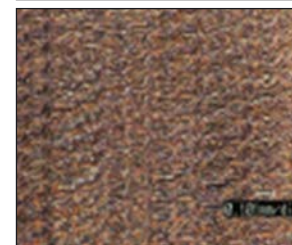
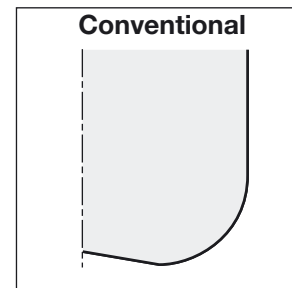
Smooth Chip Removal



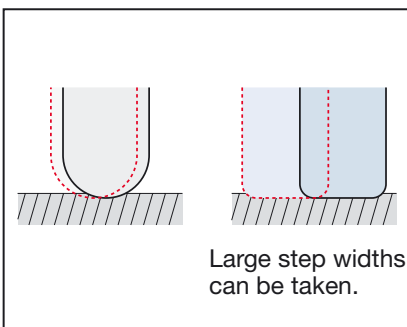
Unprecedented high corner R accuracy



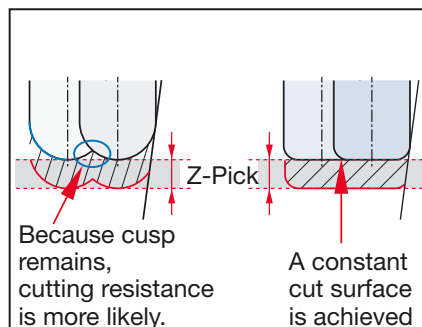
Bottom flute wiper effect



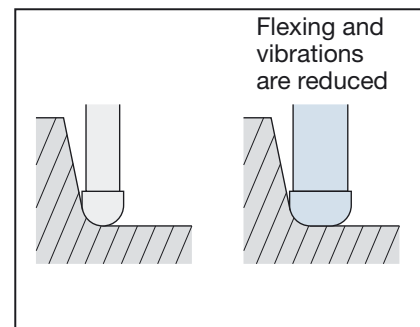
Features of radius end mill compared with ball end mill



1. Difference in step width



2. Difference in stability



3. Difference in rigidity